

114°46'30"W 114°46'W 114°45'30"W 114°45'W 114°44'30"W 114°44'W 114°43'30"W 114°43'W 114°42'30"W

Army Mule Fire IR Map

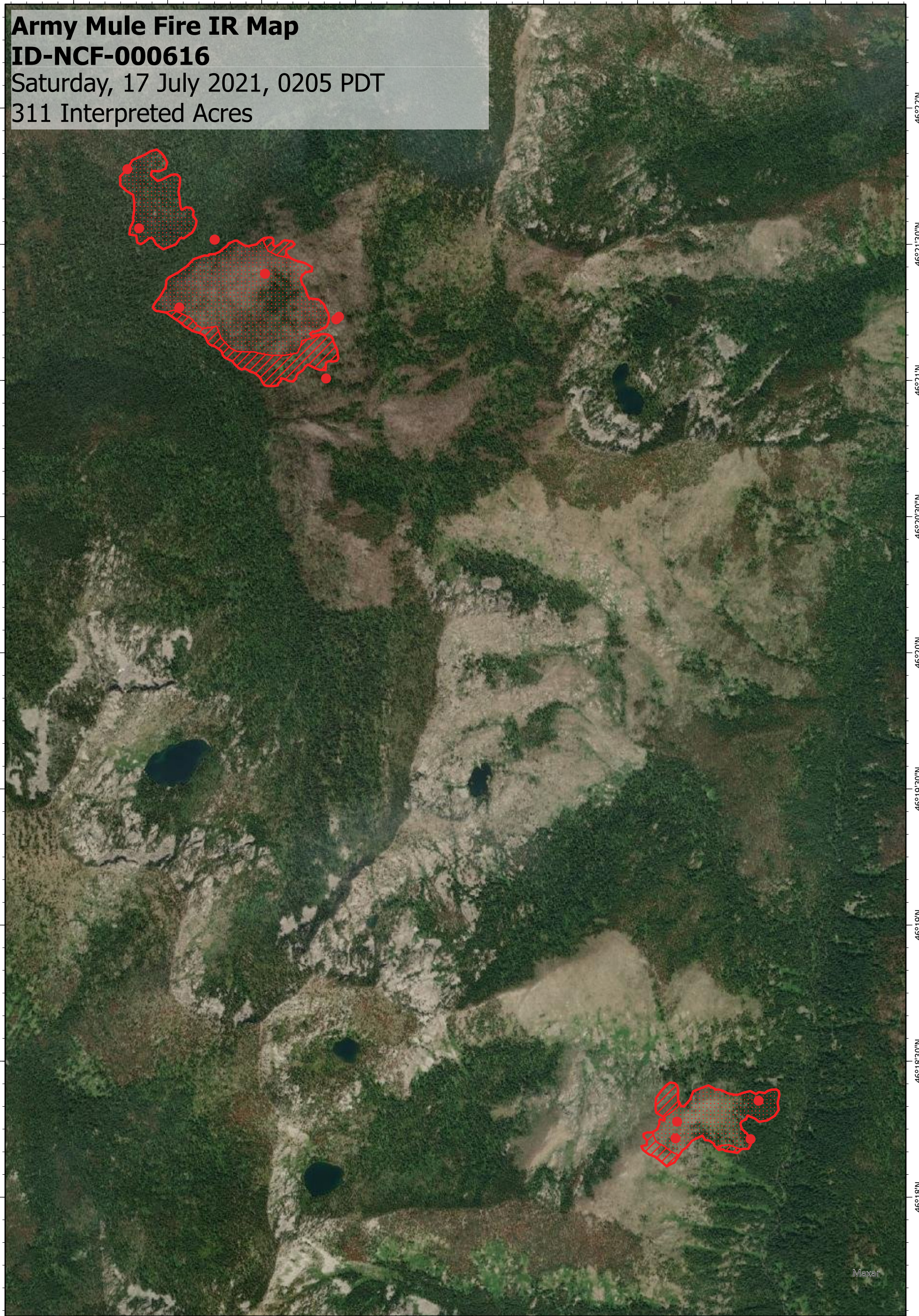
ID-NCF-000616

Saturday, 17 July 2021, 0205 PDT

311 Interpreted Acres

46°22'N
46°21'30"N
46°21'N
46°20'30"N
46°20'N
46°19'30"N
46°19'N
46°18'30"N
46°18'N

46°22'N
46°21'30"N
46°21'N
46°20'30"N
46°20'N
46°19'30"N
46°19'N
46°18'30"N
46°18'N



Legend

- Isolated Heat
- Intense Heat
- Scattered Heat
- Burn Perimeter

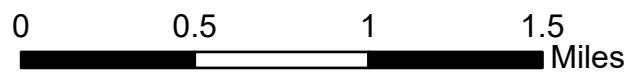
Scale: 1:35,000

Projection: WGS 1984

Produced by: Owyhee Air Research, LLC

IR Interpreter: C. Merriman

Contact: fire@owyheear.com (208) 442-5405



114°46'30"W 114°46'W 114°45'30"W 114°45'W 114°44'30"W 114°44'W 114°43'30"W 114°43'W 114°42'30"W

Maxar