

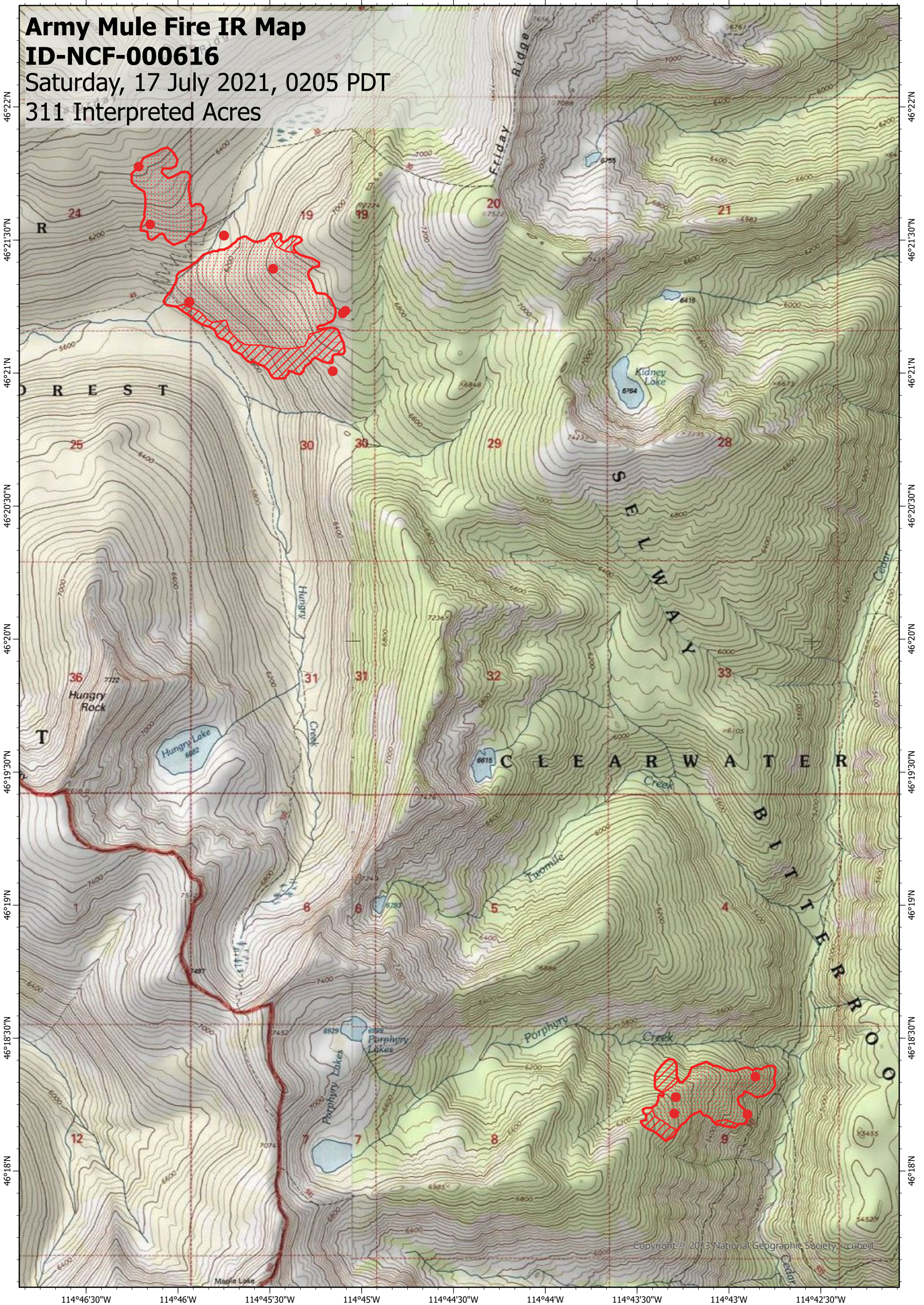
114°46'30"W 114°46'W 114°45'30"W 114°45'W 114°44'30"W 114°44'W 114°43'30"W 114°43'W 114°42'30"W

# Army Mule Fire IR Map

## ID-NCF-000616

Saturday, 17 July 2021, 0205 PDT

311 Interpreted Acres



Copyright © 2013 National Geographic Society, I-cubed

### Legend

- Isolated Heat
- ▨ Intense Heat
- ▤ Scattered Heat
- ▭ Burn Perimeter

Scale: 1:35,000

Projection: WGS 1984

Produced by: Owyhee Air Research, LLC

IR Interpreter: C. Merriman

Contact: [fire@owyheear.com](mailto:fire@owyheear.com) (208) 442-5405

