

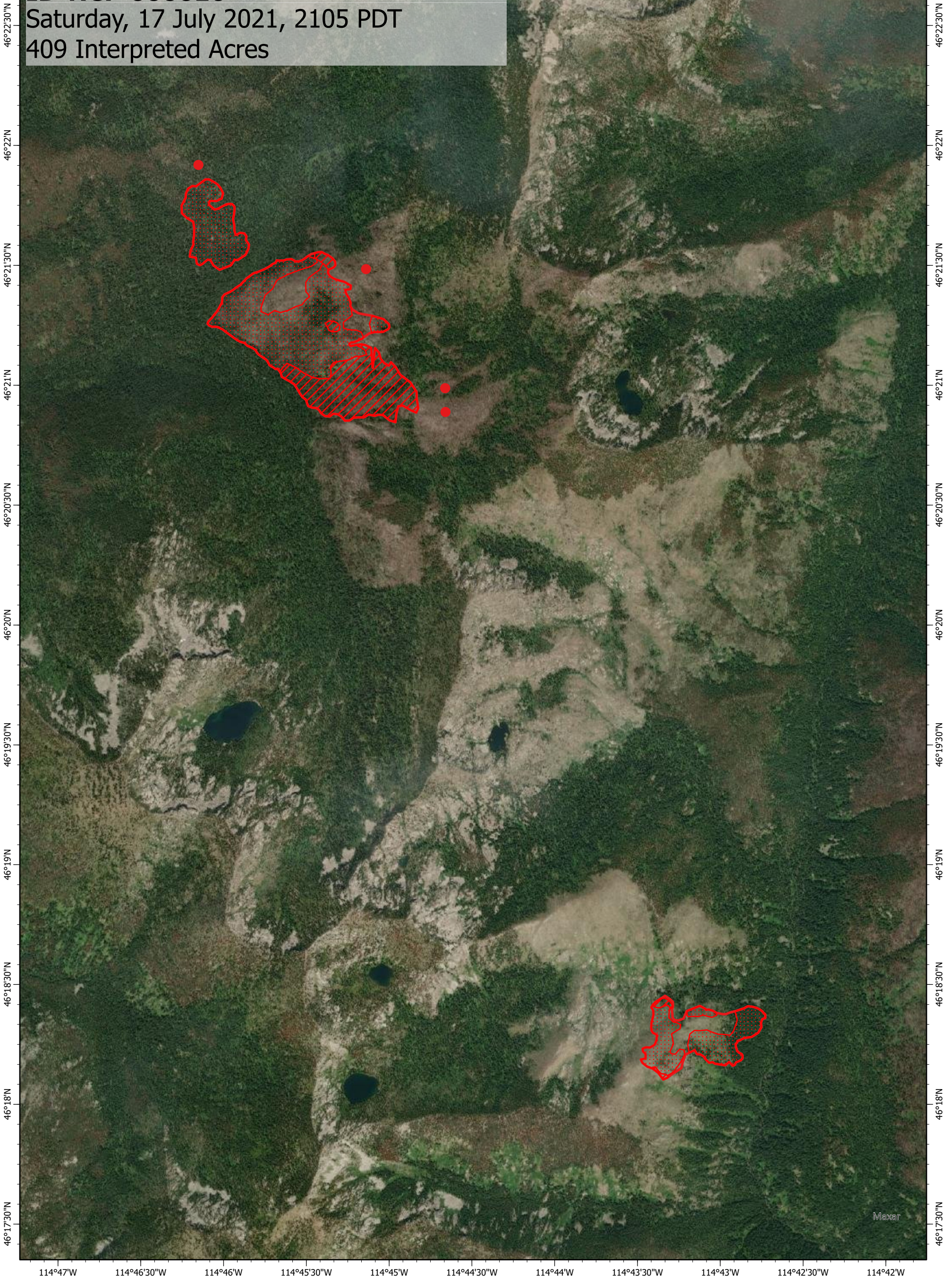
114°47'W 114°46'30"W 114°46'W 114°45'30"W 114°45'W 114°44'30"W 114°44'W 114°43'30"W 114°43'W 114°42'30"W 114°42'W

Army Mule Fire IR Map

ID-NCF-000616

Saturday, 17 July 2021, 2105 PDT

409 Interpreted Acres



Legend

- Isolated Heat
- Scattered Heat
- Intense Heat
- Burn Perimeter

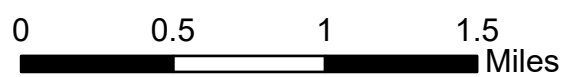
Scale: 1:40,000

Projection: WGS 1984

Produced by: Owyhee Air Research, LLC

IR Interpreter: S. Osberg

Contact: fire@owyheear.com (208) 442-5405



114°47'W 114°46'30"W 114°46'W 114°45'30"W 114°45'W 114°44'30"W 114°44'W 114°43'30"W 114°43'W 114°42'30"W 114°42'W