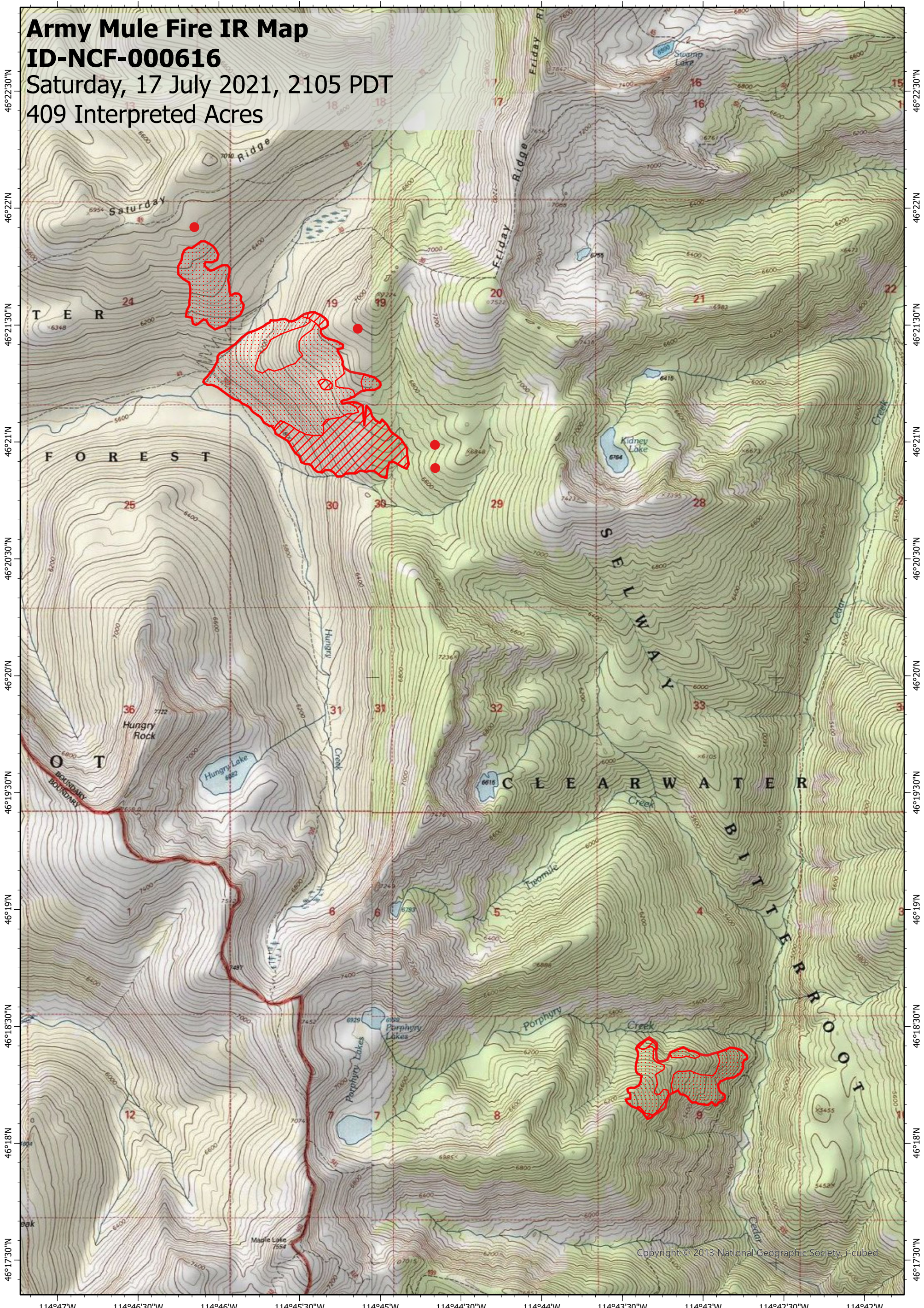


114°47'W 114°46'30"W 114°46'W 114°45'30"W 114°45'W 114°44'30"W 114°44'W 114°43'30"W 114°43'W 114°42'30"W 114°42'W

Army Mule Fire IR Map

ID-NCF-000616

Saturday, 17 July 2021, 2105 PDT
409 Interpreted Acres



Legend

- Isolated Heat
- ▨ Scattered Heat
- ▩ Intense Heat
- ▭ Burn Perimeter

Scale: 1:40,000
Projection: WGS 1984
Produced by: Owyhee Air Research, LLC
IR Interpreter: S. Osberg
Contact: fire@owyheear.com (208) 442-5405



Copyright © 2013 National Geographic Society, Inc.