

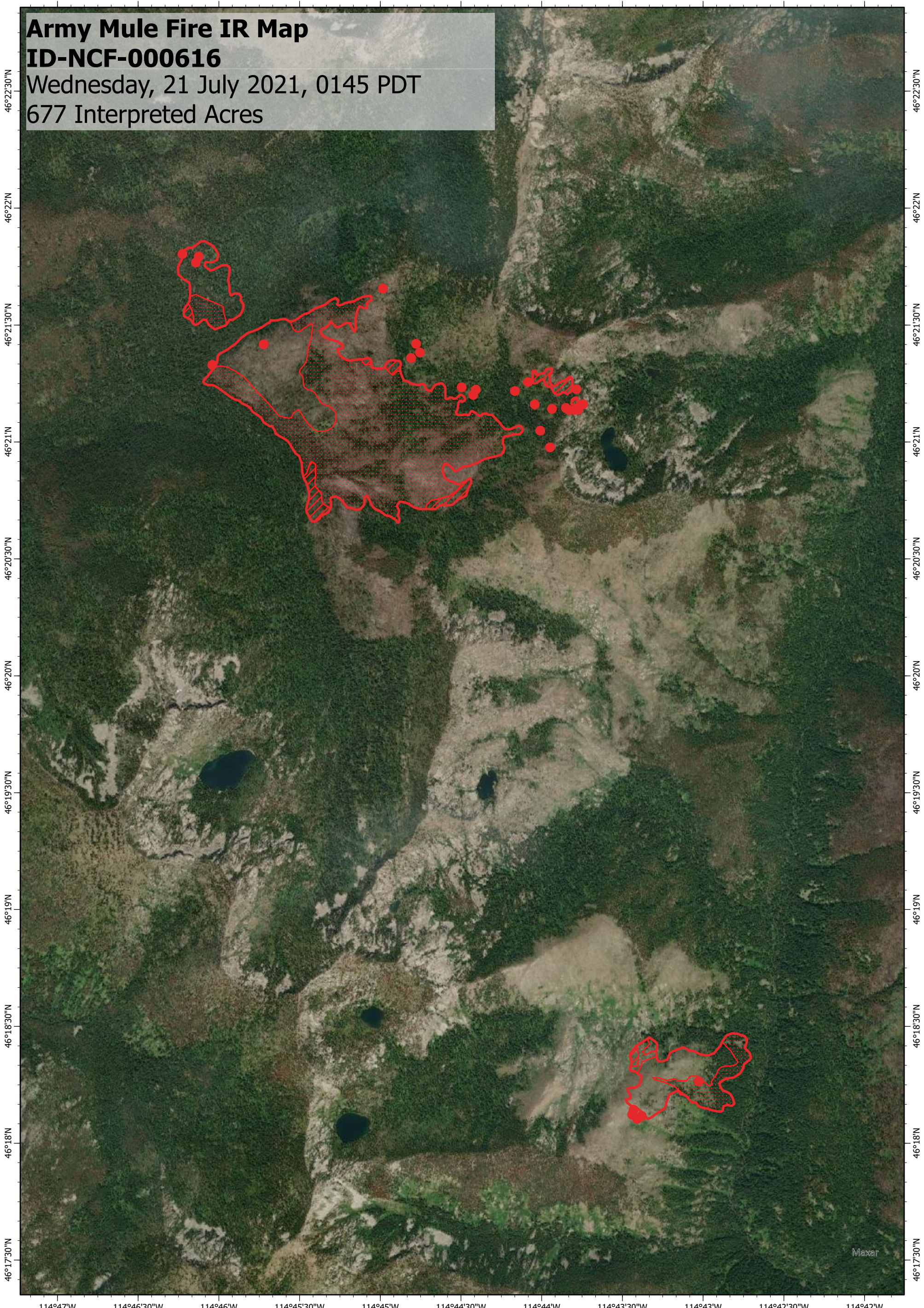
114°47'W 114°46'30"W 114°46'W 114°45'30"W 114°45'W 114°44'30"W 114°44'W 114°43'30"W 114°43'W 114°42'30"W 114°42'W

Army Mule Fire IR Map

ID-NCF-000616

Wednesday, 21 July 2021, 0145 PDT

677 Interpreted Acres



46°22'30"N
46°22'N
46°21'30"N
46°21'N
46°20'30"N
46°20'N
46°19'30"N
46°19'N
46°18'30"N
46°18'N
46°17'30"N

46°22'30"N
46°22'N
46°21'30"N
46°21'N
46°20'30"N
46°20'N
46°19'30"N
46°19'N
46°18'30"N
46°18'N
46°17'30"N

114°47'W 114°46'30"W 114°46'W 114°45'30"W 114°45'W 114°44'30"W 114°44'W 114°43'30"W 114°43'W 114°42'30"W 114°42'W

Legend

- IR Isolated Heat
- Burn Perimeter
- IR Intense Heat
- IR Scattered Heat

Scale: 1:40,000
 Projection: WGS 1984
 Produced by: Owyhee Air Research, LLC
 IR Interpreter: C. Merriman
 Contact: fire@owyheear.com (208) 442-5405

