

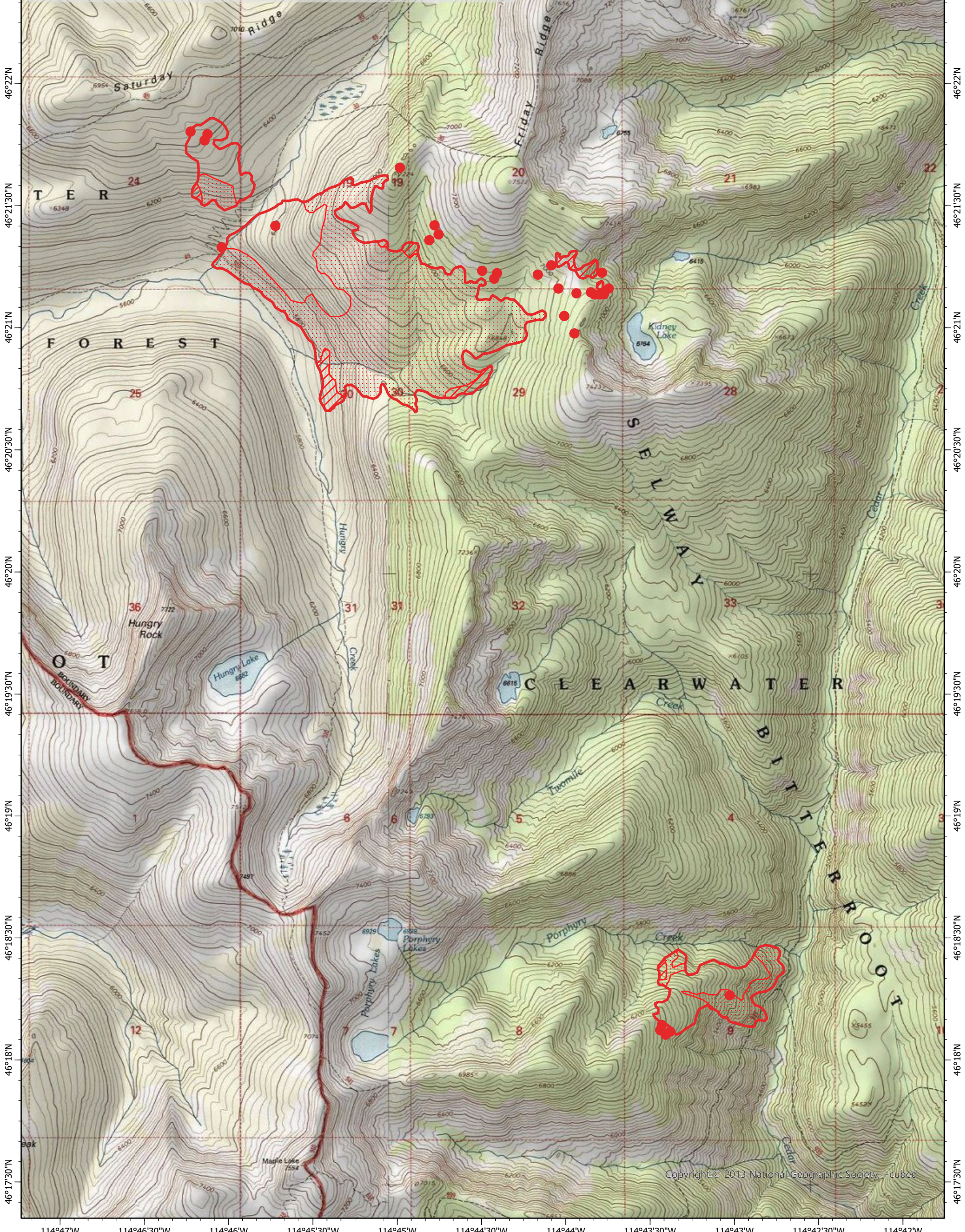
114°47'W 114°46'30"W 114°46'W 114°45'30"W 114°45'W 114°44'30"W 114°44'W 114°43'30"W 114°43'W 114°42'30"W 114°42'W

Army Mule Fire IR Map

ID-NCF-000616

Wednesday, 21 July 2021, 0145 PDT

677 Interpreted Acres



Copyright © 2013 National Geographic Society, i-cubed

Legend

- IR Isolated Heat
- Burn Perimeter
- IR Intense Heat
- IR Scattered Heat

Scale: 1:40,000

Projection: WGS 1984

Produced by: Owyhee Air Research, LLC

IR Interpreter: C. Merriman

Contact: fire@owyheear.com (208) 442-5405

