

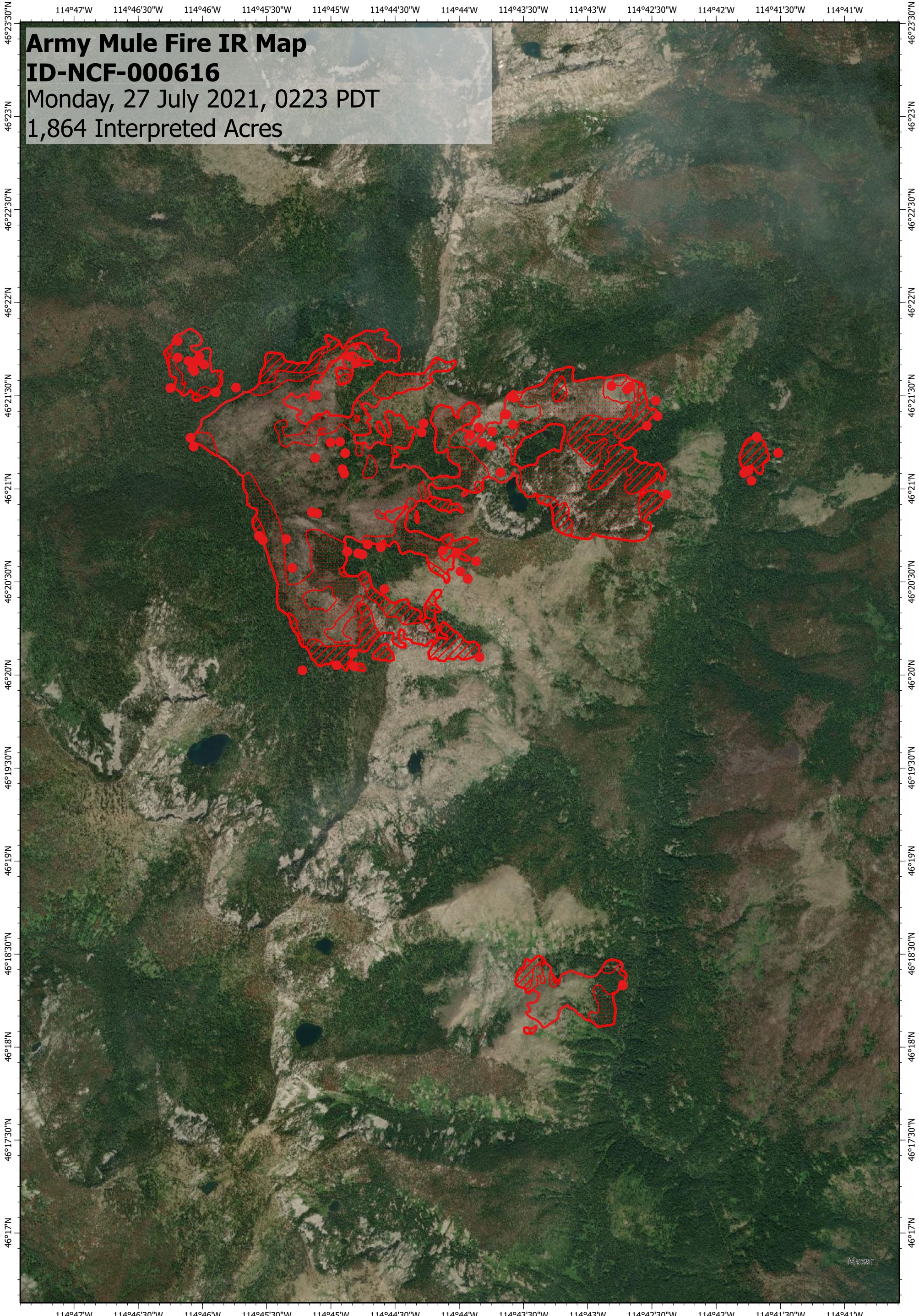
114°47'W 114°46'30"W 114°46'W 114°45'30"W 114°45'W 114°44'30"W 114°44'W 114°43'30"W 114°43'W 114°42'30"W 114°42'W 114°41'30"W 114°41'W

# Army Mule Fire IR Map

## ID-NCF-000616

Monday, 27 July 2021, 0223 PDT

1,864 Interpreted Acres



114°47'W 114°46'30"W 114°46'W 114°45'30"W 114°45'W 114°44'30"W 114°44'W 114°43'30"W 114°43'W 114°42'30"W 114°42'W 114°41'30"W 114°41'W

### Legend

- Isolated Heat
- Scattered Heat
- ▨ Intense Heat
- Burn Perimeter

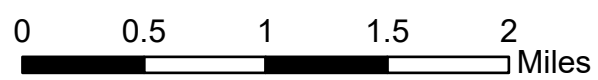
Scale: 1:50,000

Projection: WGS 1984

Produced by: Owyhee Air Research, LLC

IR Interpreter: C. Merriman

Contact: [fire@owyheear.com](mailto:fire@owyheear.com) (208) 442-5405



Maxar