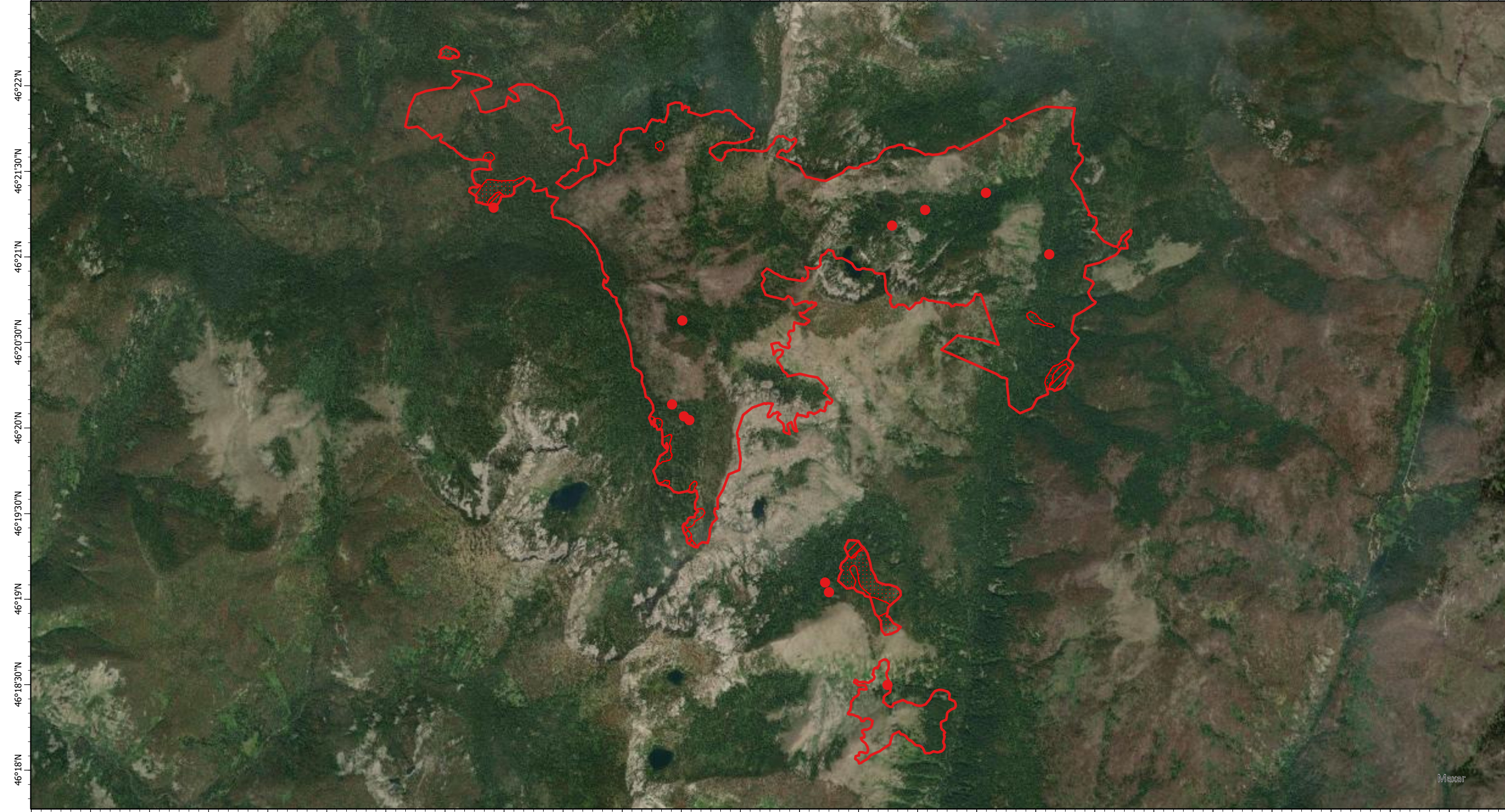


114°50'30"W 114°50'W 114°49'30"W 114°49'W 114°48'30"W 114°48'W 114°47'30"W 114°47'W 114°46'30"W 114°46'W 114°45'30"W 114°45'W 114°44'30"W 114°44'W 114°43'30"W 114°43'W 114°42'30"W 114°42'W 114°41'30"W 114°41'W 114°40'30"W 114°40'W 114°39'30"W 114°39'W 114°38'30"W

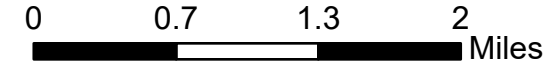


114°50'30"W 114°50'W 114°49'30"W 114°49'W 114°48'30"W 114°48'W 114°47'30"W 114°47'W 114°46'30"W 114°46'W 114°45'30"W 114°45'W 114°44'30"W 114°44'W 114°43'30"W 114°43'W 114°42'30"W 114°42'W 114°41'30"W 114°41'W 114°40'30"W 114°40'W 114°39'30"W 114°39'W 114°38'30"W

Army Mule Fire IR Map
ID-NCF-000616
14 August 2021, 2130 PDT
3,3,845 Interpreted Acres

Scale: 1:57,000
Projection: WGS 1984
Produced by: Owyhee Air Research, LLC
IR Interpreter: S. Osberg
Contact: fire@owyheear.com (208) 442-5405

Legend
● Isolated Heat
▭ Burn Perimeter
▨ Intense Heat
▤ Scattered Heat



Maxar