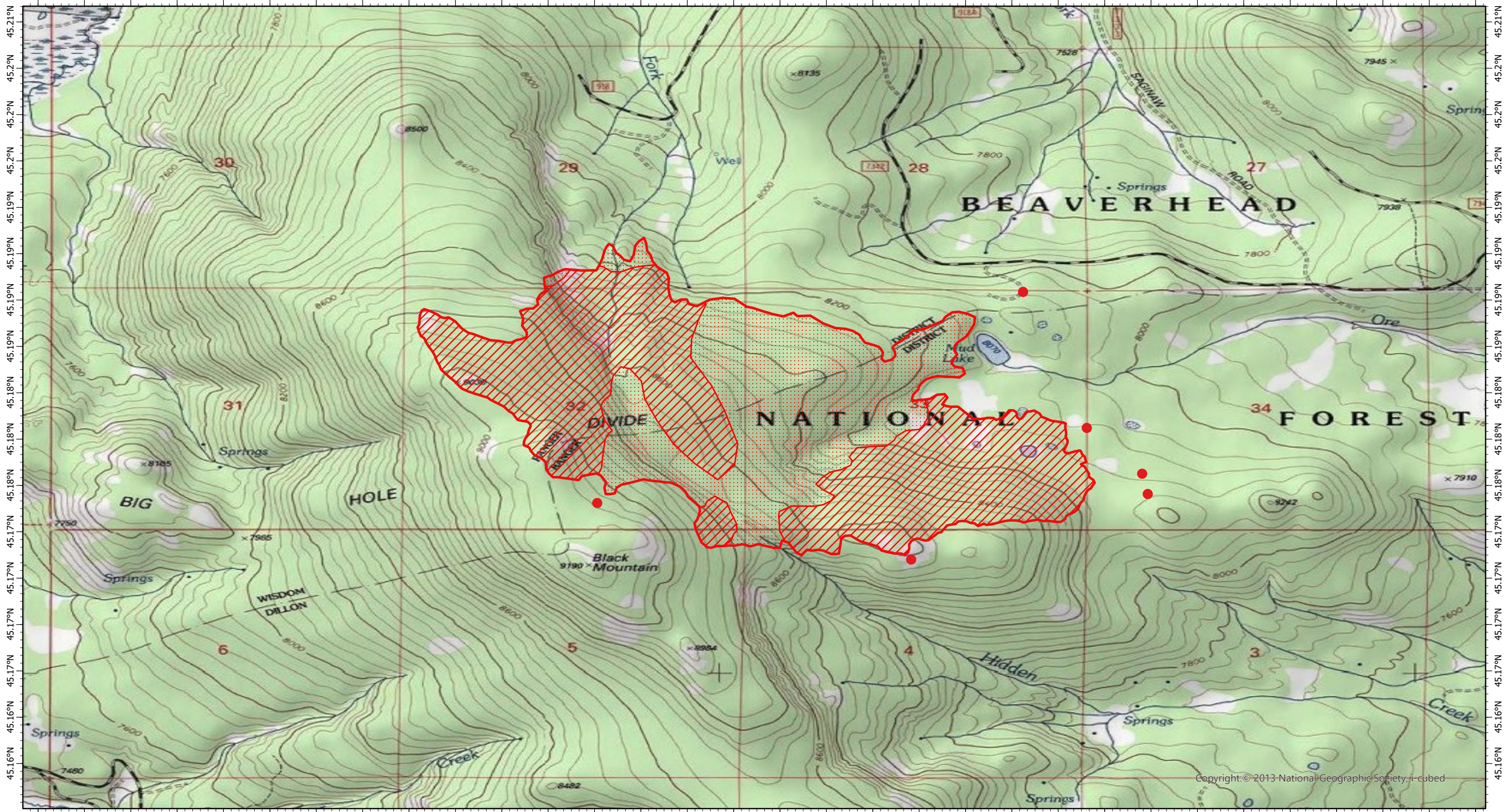


113.5°W 113.5°W 113.49°W 113.49°W 113.49°W 113.48°W 113.48°W 113.48°W 113.48°W 113.47°W 113.47°W 113.47°W 113.46°W 113.46°W 113.46°W 113.46°W 113.45°W 113.45°W 113.45°W 113.44°W 113.44°W 113.44°W 113.44°W 113.43°W 113.43°W 113.43°W 113.42°W 113.42°W 113.42°W 113.41°W



Copyright: © 2013 National Geographic Society, i-cubed

113.5°W 113.5°W 113.49°W 113.49°W 113.49°W 113.48°W 113.48°W 113.48°W 113.48°W 113.47°W 113.47°W 113.47°W 113.46°W 113.46°W 113.46°W 113.46°W 113.45°W 113.45°W 113.45°W 113.44°W 113.44°W 113.44°W 113.44°W 113.43°W 113.43°W 113.43°W 113.42°W 113.42°W 113.42°W 113.41°W

Black Mountain Fire IR Map
MT-BDF-6306

Sunday, 17 July 2021, 2155 MDT
 865 Interpreted Acres

Scale: 1:24,000
 Projection: WGS 1984
 Produced by: Owyhee Air Research, LLC
 IR Interpreter: S. Osberg
 Contact: fire@owyheeair.com (208) 442-5405

- Legend**
- Isolated Heat
 - ▨ Intense Heat
 - ▤ Scattered Heat
 - ▭ Burn Perimeter

