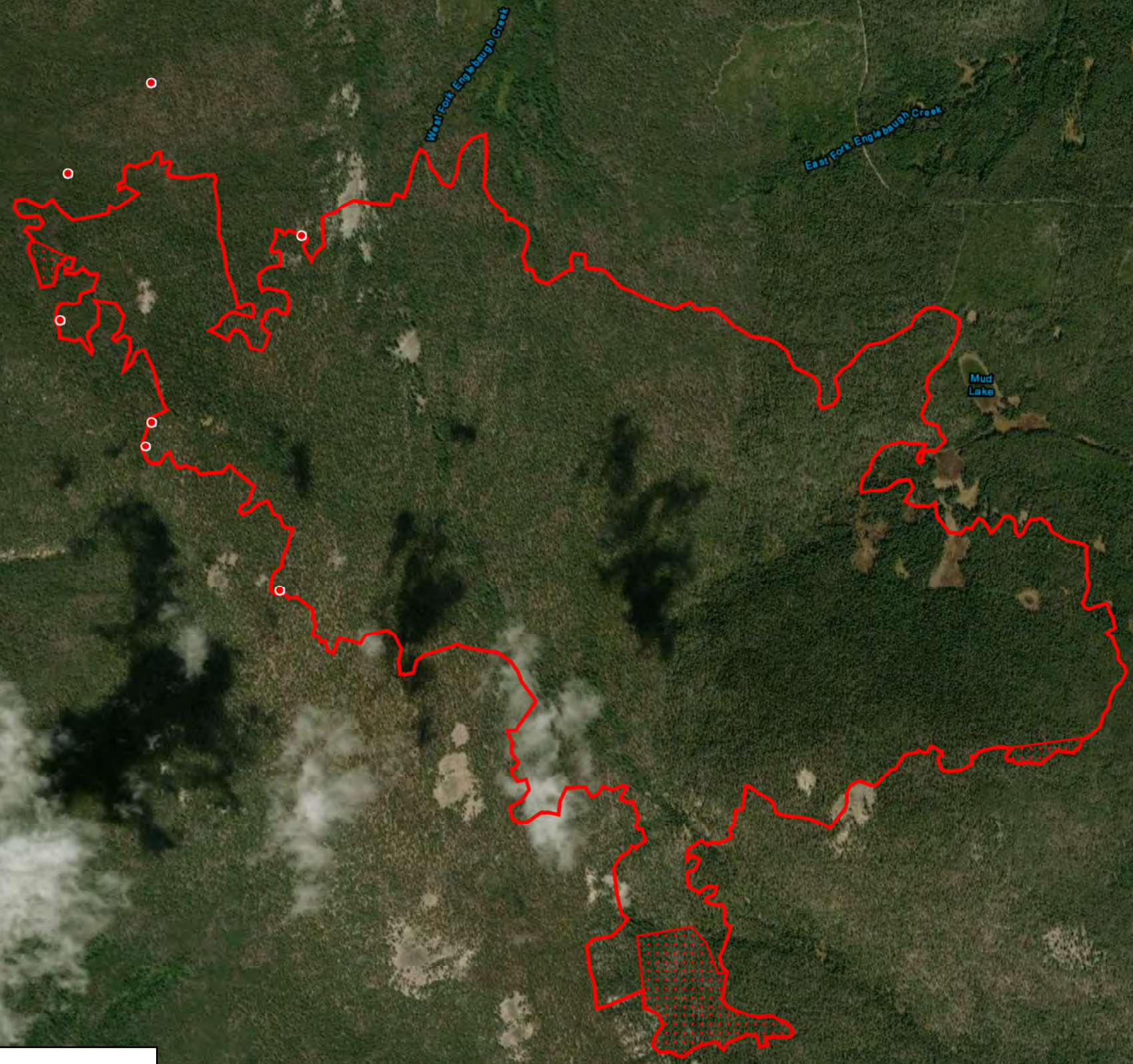


Black Mountain Fire MT-BDF-6306 7/30/2021

Infrared Interpretation
IR Flight 7/29/2021 2120 MDT
1,021 Acres



45°11'

45°10'

45°11'

45°10'

-113°29'

-113°28'

-113°27'

-113°26'

-113°29'

-113°28'

-113°27'

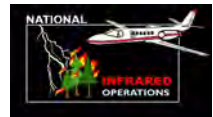

-113°26'

-113°25'

UTM Zone 12 WGS84

0 Miles 0.5

7/29/2021 11:24:35 PM PDT
Black_Mountain_IR_Map.mxd



Mark Grupe, IRIN
mark_grupe@nps.gov

- IR Isolated Heat Source
- IR Heat Perimeter
- ⊙ IR Scattered Heat