

113°25'0"W

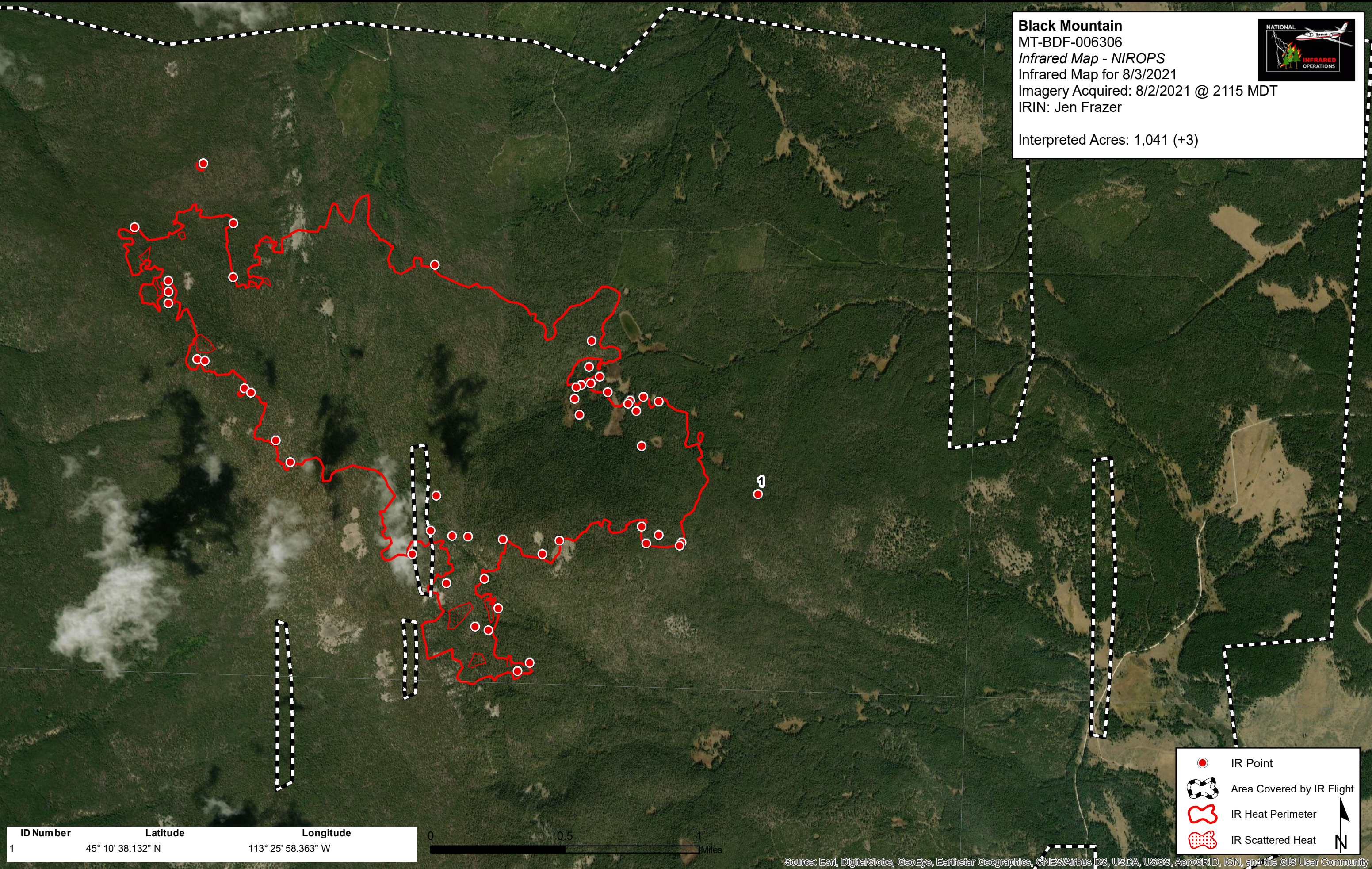
Black Mountain
 MT-BDF-006306
Infrared Map - NIROPS
 Infrared Map for 8/3/2021
 Imagery Acquired: 8/2/2021 @ 2115 MDT
 IRIN: Jen Frazer



Interpreted Acres: 1,041 (+3)

45°10'0"N

45°10'0"N



ID Number	Latitude	Longitude
1	45° 10' 38.132" N	113° 25' 58.363" W



- IR Point
- Area Covered by IR Flight
- IR Heat Perimeter
- IR Scattered Heat

Source: Esri, DigitalGlobe, GeoEye, Earthstar Geographics, CNES/Airbus DS, USDA, USGS, AeroGRID, IGN, and the GIS User Community

113°25'0"W