

113°29'0"W

113°28'0"W

113°27'0"W

113°26'0"W

113°25'0"W

Black Mountain
MT-BDF-006306
 Infrared Map - NIROPS
 Interpreted Acres: 1,042 (+0)
 Infrared Map for 8/5/2021
 Imagery Acquired: 8/4/2021 @ 2120 MDT
 IRIN: Jen Frazer
 UTM Zone 12N NAD83



45°11'0"N

45°11'0"N

45°10'0"N

45°10'0"N

45°10'0"N

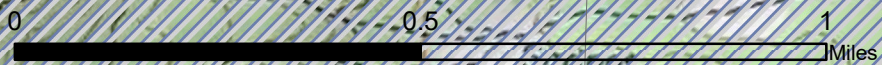
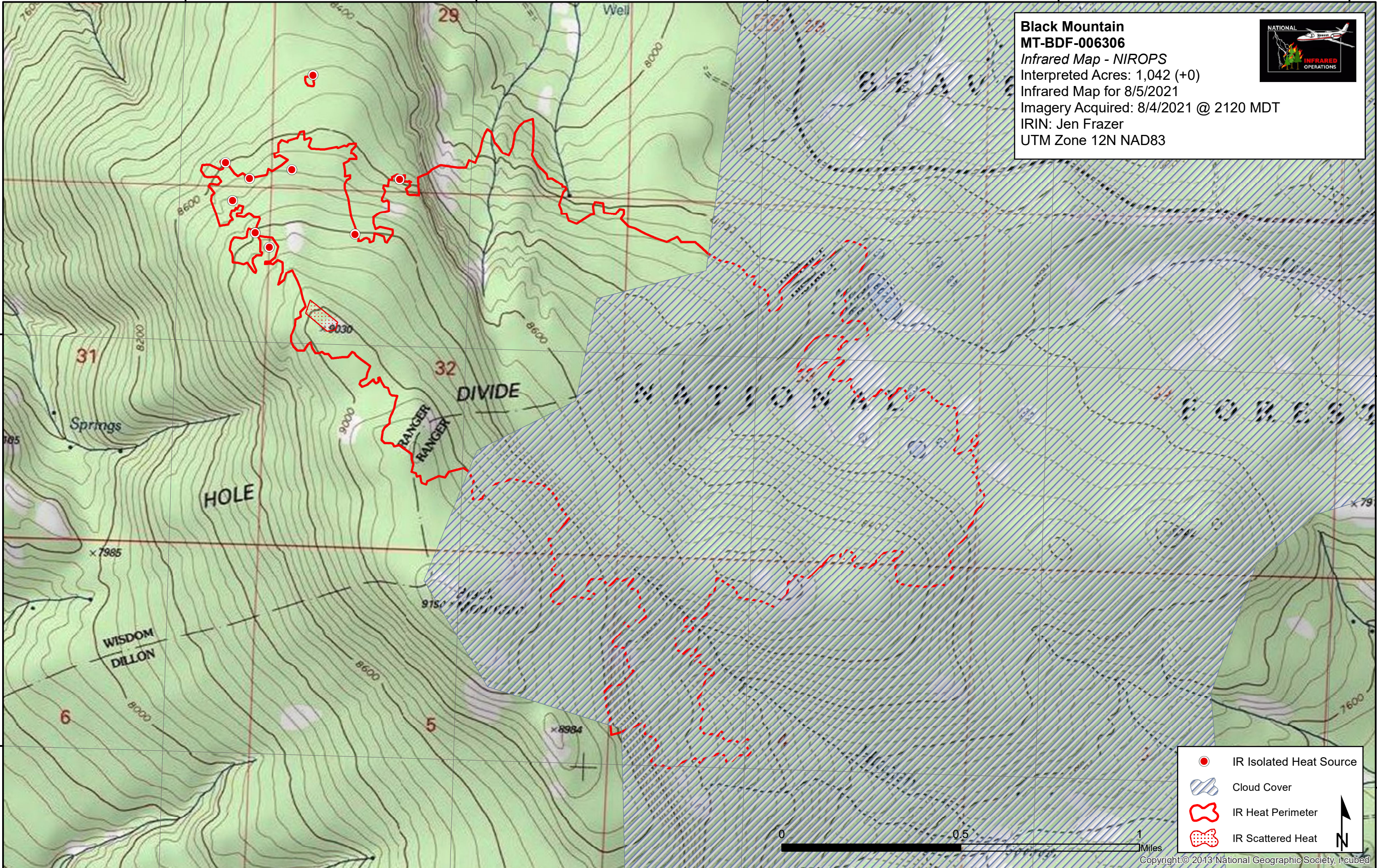
113°29'0"W





113°28'0"W

113°27'0"W

113°26'0"W

113°25'0"W



-  IR Isolated Heat Source
-  Cloud Cover
-  IR Heat Perimeter
-  IR Scattered Heat

