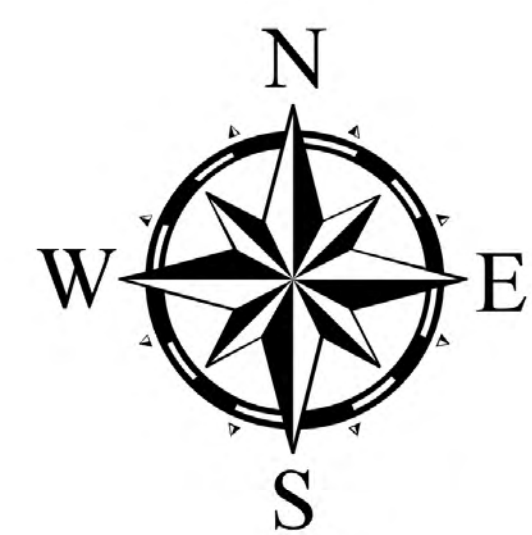
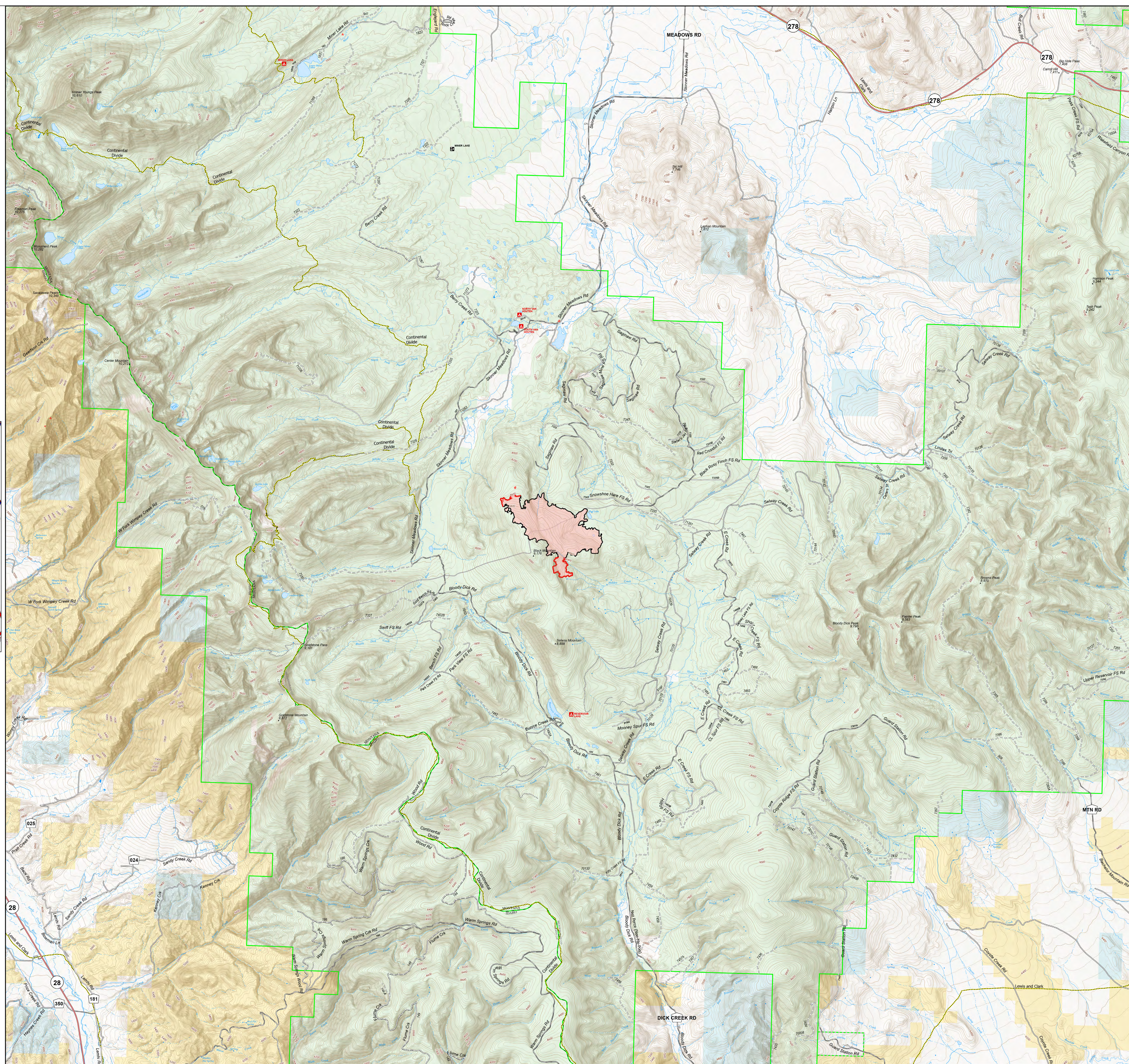
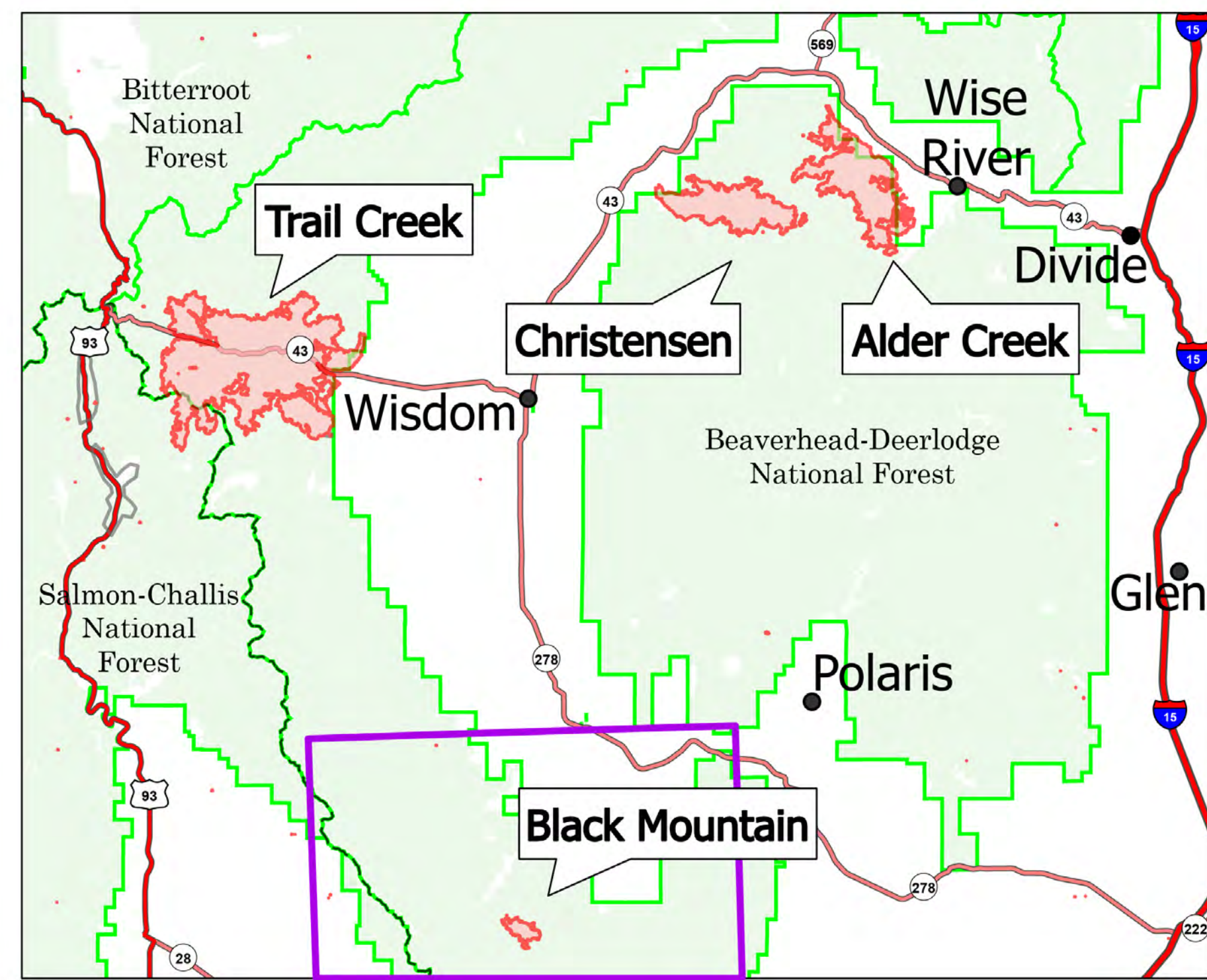


# Public Information

Black Mountain  
 MT-BDF-006306  
 8/11/2021  
 1,042 acres  
 32% Contained

- Wildfire Daily Fire Perimeter
- State Public Lands
- Other State Lands
- Bureau of Land Management Lands
- Forest Service Land
- Big Hole Battlefield
- Fire Edge
- Contained Line



Fire perimeter updated from  
 Acres from IR on 08/11/21 00:08

0 0.75 1.5 2.25 3 Miles

1 inch equals 0.7 miles Scale: 1:41,392

