

113°29'0"W

113°28'0"W

113°27'0"W

113°26'0"W

113°25'0"W

Black Mountain
MT-BDF-006306
 Infrared Map - NIROPS
 Interpreted Acres: 1,042 (+0)
 Infrared Map for 8/7/2021
 Imagery Acquired: 8/6/2021 @ 2145 MDT
 IRIN: Trish Boll(t) / Jen Frazer
 UTM Zone 12N NAD83

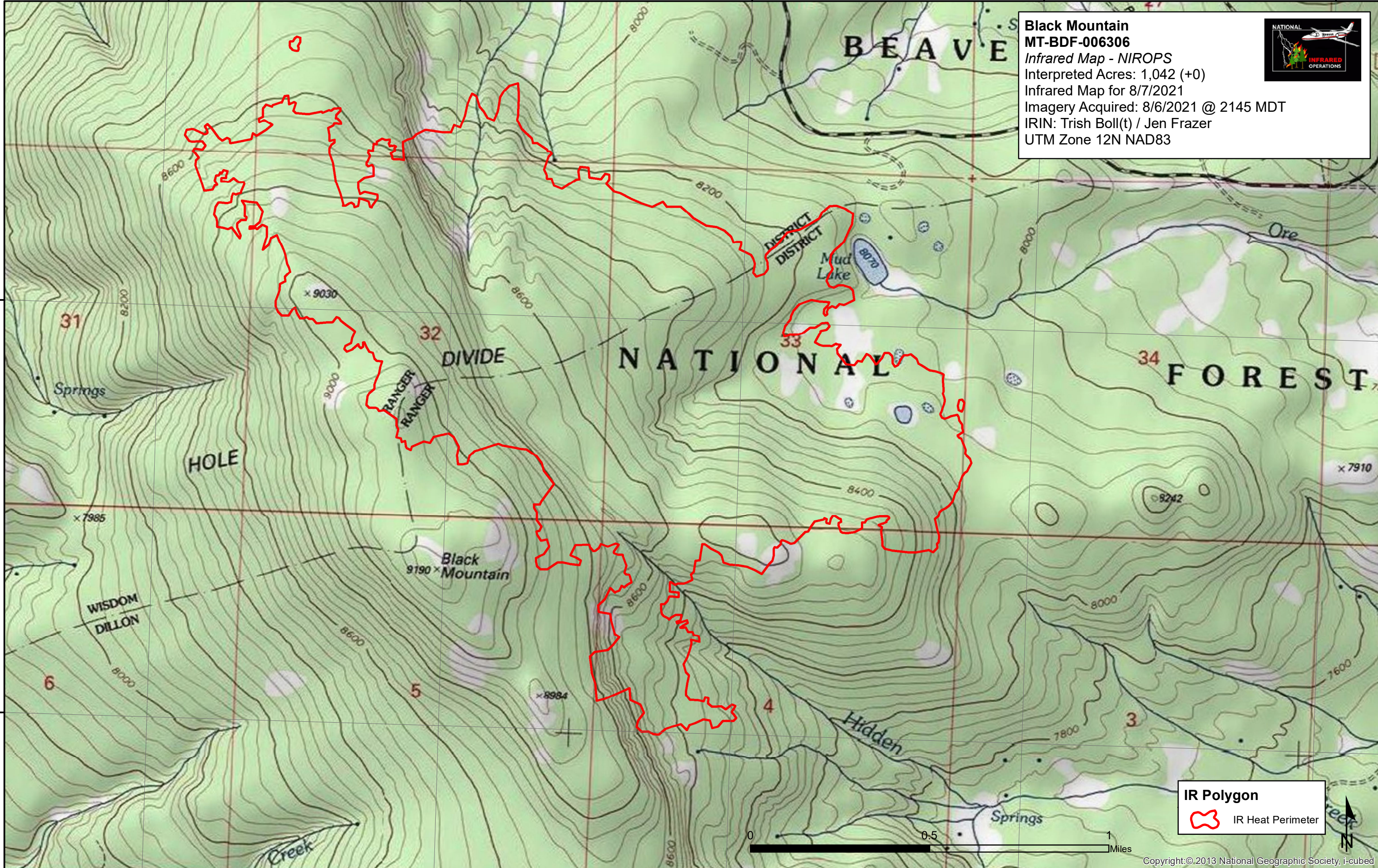


45°11'0"N

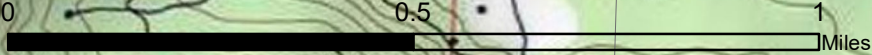
45°11'0"N

45°10'0"N

45°10'0"N



IR Polygon
 IR Heat Perimeter



Copyright © 2013 National Geographic Society, i-cubed

113°29'0"W

113°28'0"W

113°27'0"W

113°26'0"W

113°25'0"W