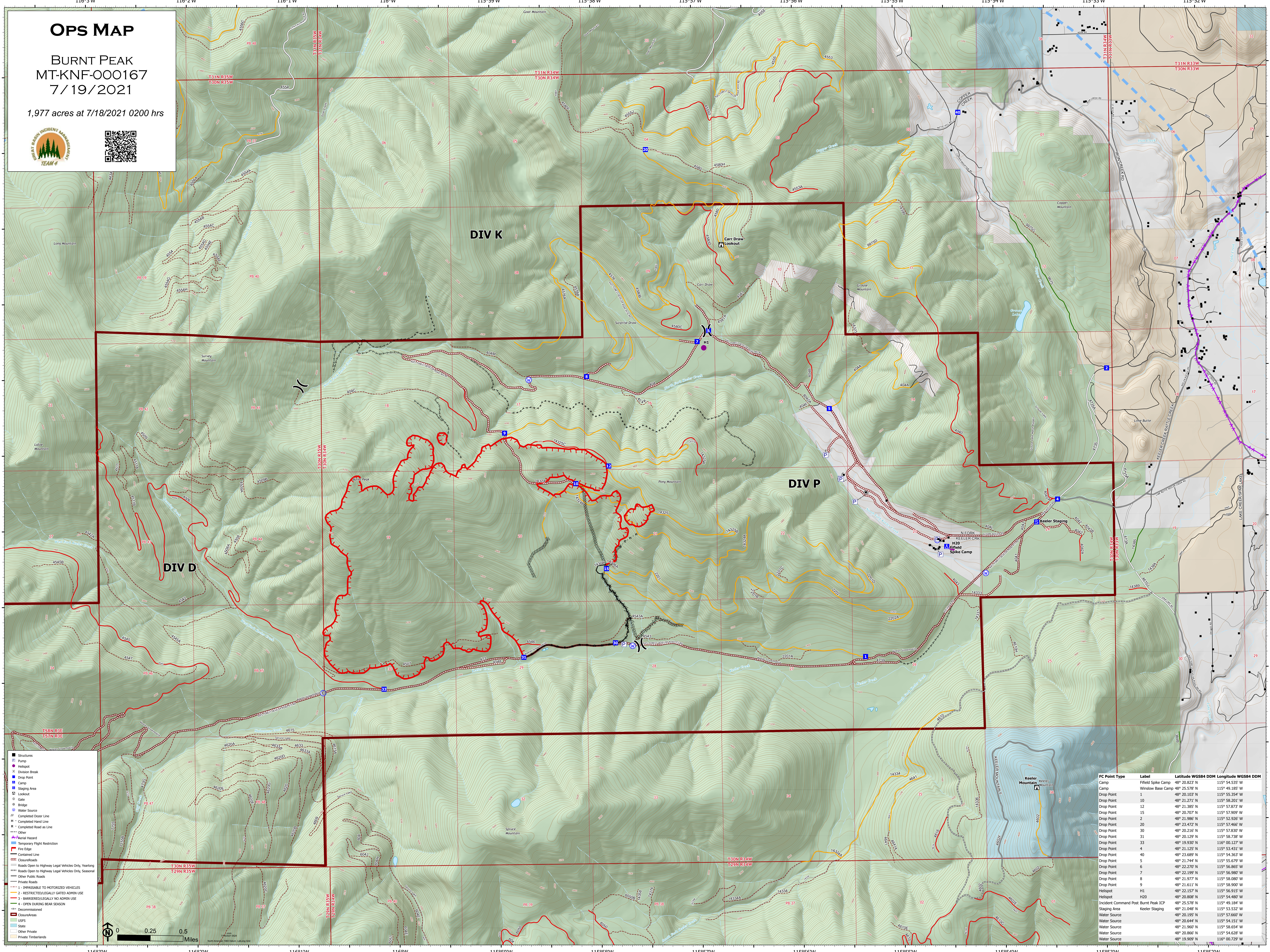


OPS MAP

BURNT PEAK
MT-KNF-000167
7/19/2021

1,977 acres at 7/18/2021 0200 hrs



- Structures
- Pump
- Helispot
- Division Break
- Drop Point
- Camp
- Staging Area
- Lookout
- Gate
- Bridge
- Water Source
- Completed Ditch Line
- H - Completed Hand Line
- R - Completed Road as Line
- Other
- Normal Hazard
- Temporary Flight Restriction
- Fire Edge
- Contained Line
- Closure Roads
- Roads Open to Highway Legal Vehicles Only, Yearlong
- Roads Open to Highway Legal Vehicles Only, Seasonal
- Other Public Roads
- Private Roads
- 1 - IMPASSABLE TO MOTORIZED VEHICLES
- 2 - RESTRICTED/LEGALLY GATED ADMIN USE
- 3 - BARRIERED/LEGALLY NO ADMIN USE
- 4 - OPEN DURING BEAR SEASON
- Decommissioned
- Closure Areas
- USFS
- State
- Other Private
- Private Timbers

FC Point Type	Label	Latitude WGS84 DDM	Longitude WGS84 DDM
Camp	Field Spike Camp	48° 20.823' N	115° 54.535' W
Camp	Winslow Base Camp	48° 25.578' N	115° 49.185' W
Drop Point	1	48° 20.103' N	115° 55.354' W
Drop Point	10	48° 21.271' N	115° 58.201' W
Drop Point	12	48° 21.385' N	115° 57.873' W
Drop Point	15	48° 20.707' N	115° 57.909' W
Drop Point	2	48° 21.986' N	115° 52.926' W
Drop Point	20	48° 23.472' N	115° 57.666' W
Drop Point	30	48° 20.216' N	115° 57.830' W
Drop Point	31	48° 20.129' N	115° 58.738' W
Drop Point	33	48° 19.930' N	116° 00.127' W
Drop Point	4	48° 21.125' N	115° 53.431' W
Drop Point	40	48° 23.689' N	115° 54.363' W
Drop Point	5	48° 21.744' N	115° 57.979' W
Drop Point	6	48° 22.270' N	115° 56.865' W
Drop Point	7	48° 22.199' N	115° 56.980' W
Drop Point	8	48° 21.977' N	115° 58.080' W
Drop Point	9	48° 21.611' N	115° 58.900' W
Helispot	H1	48° 22.157' N	115° 56.515' W
Helispot	H20	48° 20.808' N	115° 54.080' W
Incident Command Post	Burnt Peak TCP	48° 25.578' N	115° 49.184' W
Staging Area	Keeler Staging	48° 21.048' N	115° 53.532' W
Water Source		48° 20.195' N	115° 57.660' W
Water Source		48° 20.644' N	115° 54.151' W
Water Source		48° 21.960' N	115° 58.654' W
Water Source		48° 20.866' N	115° 54.038' W
Water Source		48° 19.909' N	116° 00.729' W

