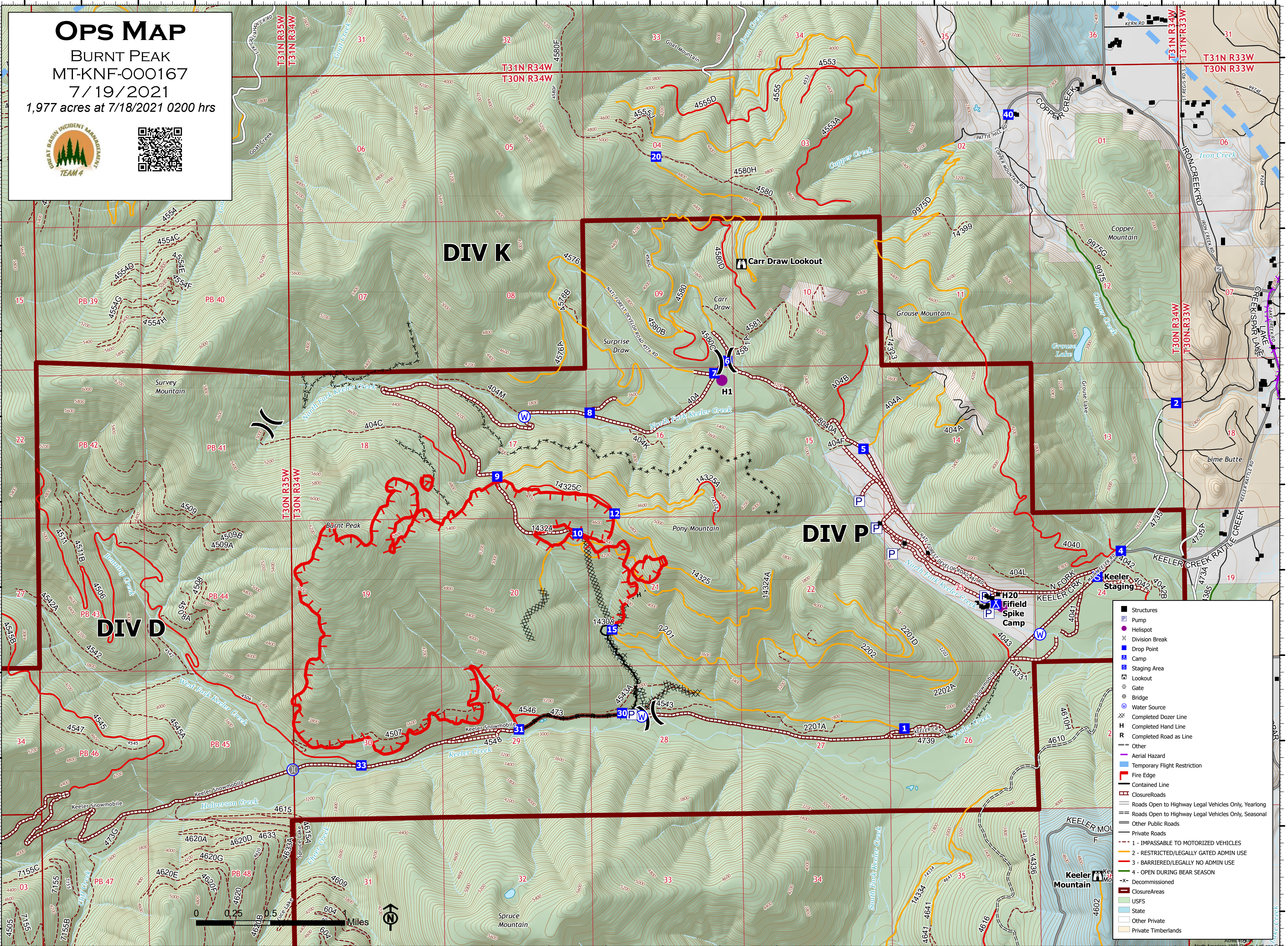


116°3'W 116°2'W 116°1'W 116°W 115°59'W 115°58'W 115°57'W 115°56'W 115°55'W 115°54'W 115°53'W 115°52'W



**OPS MAP**  
 BURNT PEAK  
 MT-KNF-000167  
 7/19/2021  
 1,977 acres at 7/18/2021 0200 hrs




	Structures
	Pump
	Helispot
	Division Break
	Drop Point
	Camp
	Staging Area
	Lookout
	Gate
	Bridge
	Water Source
	Completed Dozer Line
	Completed Hand Line
	Completed Road as Line
	Other
	Aerial Hazard
	Temporary Flight Restriction
	Fire Edge
	Contained Line
	ClosureRoads
	Roads Open to Highway Legal Vehicles Only, Yearlong
	Roads Open to Highway Legal Vehicles Only, Seasonal
	Other Public Roads
	Private Roads
	1 - IMPASSABLE TO MOTORIZED VEHICLES
	2 - RESTRICTED/LEGALLY GATED ADMIN USE
	3 - BARRIERED/LEGALLY NO ADMIN USE
	4 - OPEN DURING BEAR SEASON
	Decommissioned
	ClosureAreas
	USFS
	State
	Other Private
	Private Timberlands



116°3'W 116°2'W 116°1'W 116°W 115°59'W 115°58'W 115°57'W 115°56'W 115°55'W 115°54'W 115°53'W 115°52'W

48°23.99'N  
48°23'N  
48°22'N  
48°21'N  
48°20'N  
48°19'N

48°23.99'N  
48°23'N  
48°22'N  
48°21'N  
48°20'N  
48°19'N