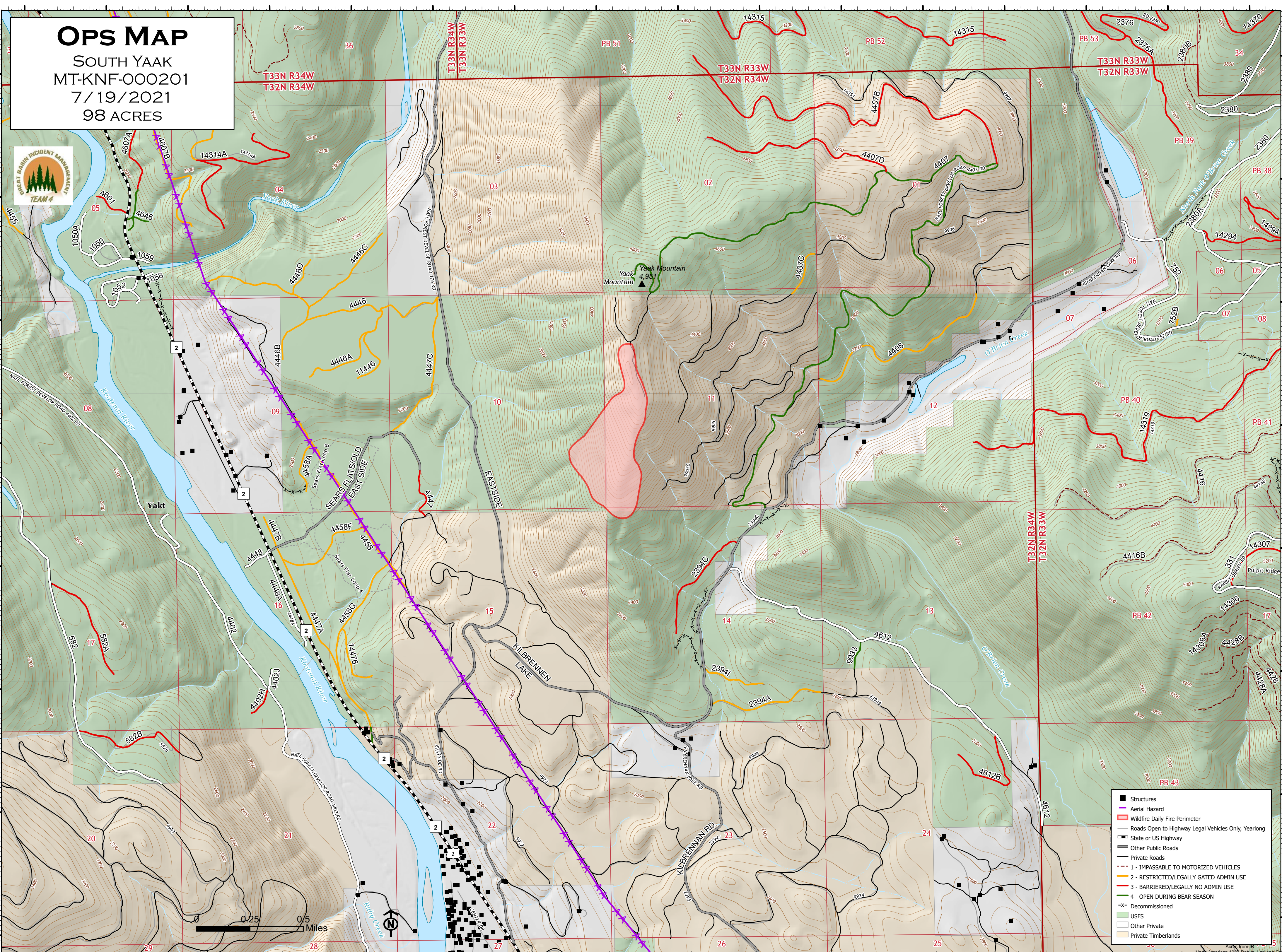


115°59'W 115°58'W 115°57'W 115°56'W 115°55'W 115°54'W 115°53'W 115°52'W

# OPS MAP

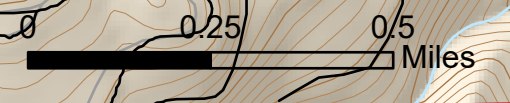
SOUTH YAAK  
MT-KNF-000201  
7/19/2021  
98 ACRES



48°34'N  
48°33'N  
48°32'N  
48°31'N

48°34'N  
48°33'N  
48°32'N  
48°31'N

115°59'W 115°58'W 115°57'W 115°56'W 115°55'W 115°54'W 115°53'W 115°52'W



- Structures
- Aerial Hazard
- ▭ Wildfire Daily Fire Perimeter
- ▬ Roads Open to Highway Legal Vehicles Only, Yearlong
- ▬ State or US Highway
- ▬ Other Public Roads
- ▬ Private Roads
- ▬ 1 - IMPASSABLE TO MOTORIZED VEHICLES
- ▬ 2 - RESTRICTED/LEGALLY GATED ADMIN USE
- ▬ 3 - BARRIERED/LEGALLY NO ADMIN USE
- ▬ 4 - OPEN DURING BEAR SEASON
- X- Decommissioned
- USFS
- Other Private
- Private Timberlands

Acq. from IRM