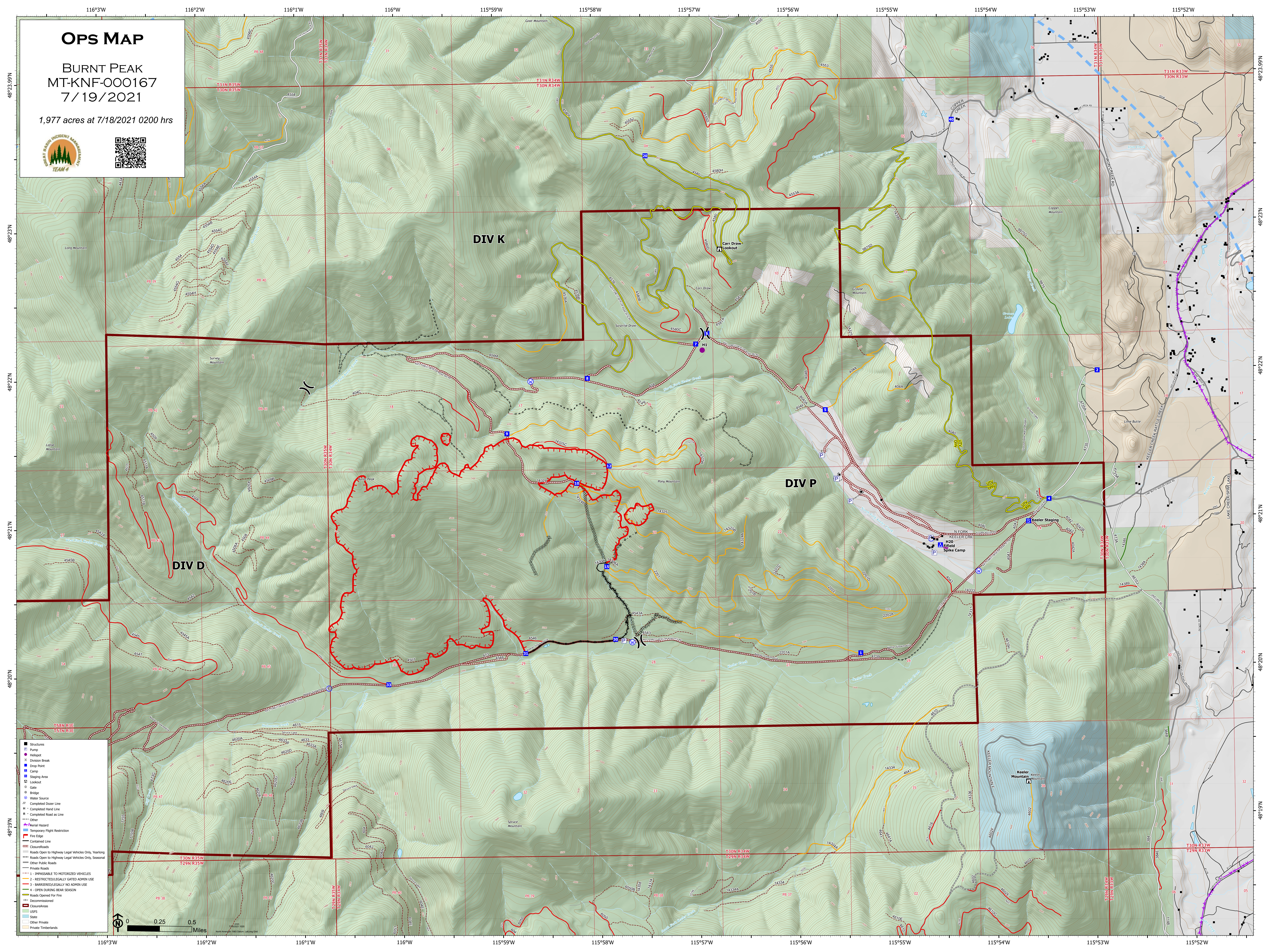


OPS MAP

BURNT PEAK
MT-KNF-000167
7/19/2021

1,977 acres at 7/18/2021 0200 hrs



- Structures
- Pump
- Hi-hop
- Division Break
- Drop Point
- Camp
- Staging Area
- Lookout
- Gate
- Bridge
- Water Source
- Completed Outer Line
- Completed Inner Line
- Completed Road as Line
- Other
- Area Hazard
- Temporary Flight Restriction
- Fire Edge
- Contained Line
- Closure Roads
- Roads Open to Highway Legal Vehicles Only, Yearlong
- Roads Open to Highway Legal Vehicles Only, Seasonal
- Other Public Roads
- Private Roads
- 1 - IMPASSIBLE TO MOTORIZED VEHICLES
- 2 - RESTRICTED/LEGALLY GATED ADMIN USE
- 3 - BARRIERED/LEGALLY NO ADMIN USE
- 4 - OPEN DURING BEAR SEASON
- Roads Closed For Fire
- Decommissioned
- Closure Areas
- USFS
- State
- Other Private
- Private Timberlands

