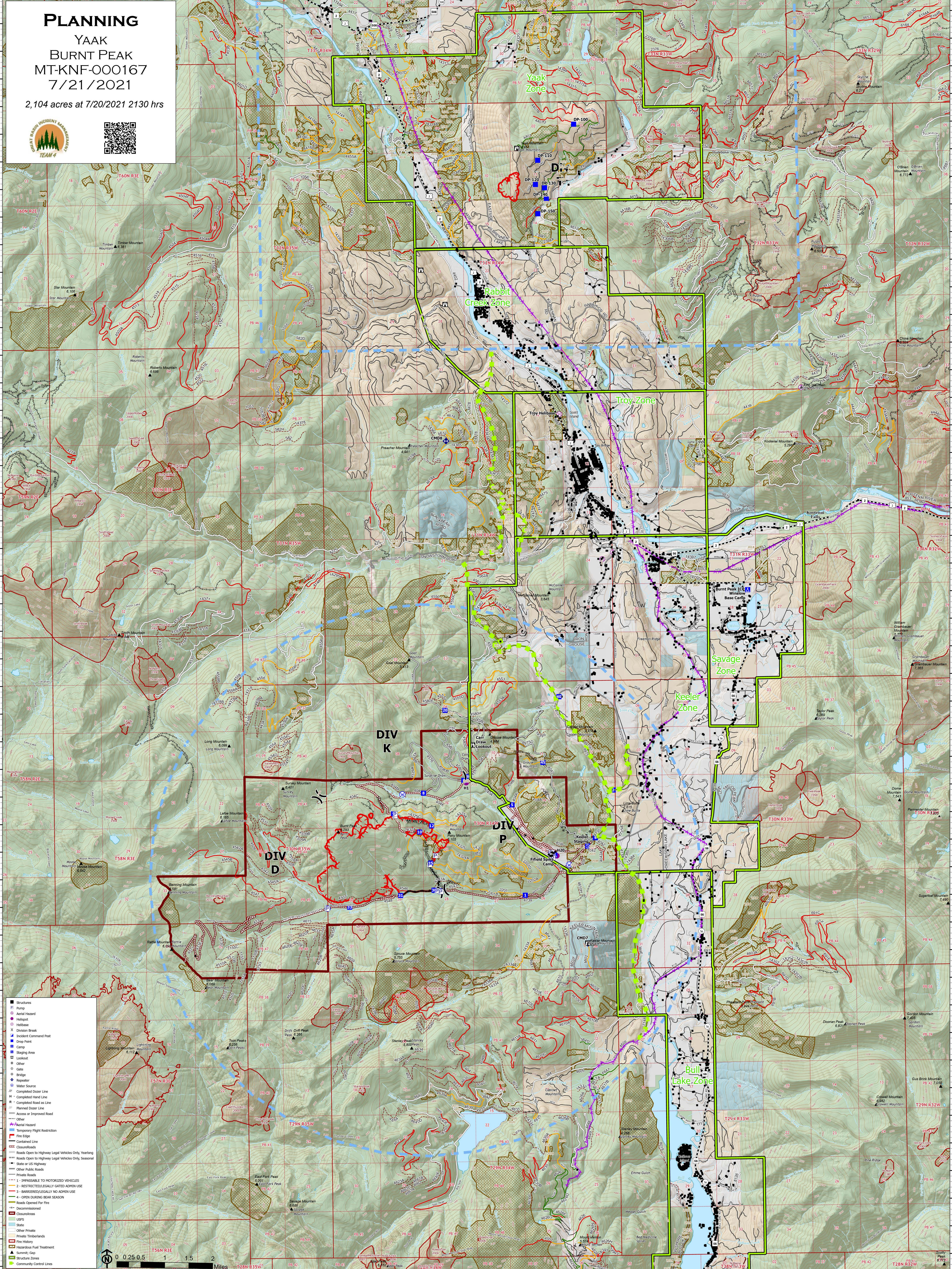


# PLANNING

YAAK  
BURNT PEAK  
MT-KNF-000167  
7/21/2021

2,104 acres at 7/20/2021 2130 hrs



- Structures
- Pump
- Aerial Hazard
- Helibase
- Division Break
- Incident Command Post
- Fire Point
- Camp
- Staging Area
- Lookout
- Gate
- Bridge
- Repeater
- Water Source
- Completed Doser Line
- Completed Hand Line
- Completed Road as Line
- Planned Doser Line
- Access or Improved Road
- Other
- Aerial Hazard
- Temporary Flight Restriction
- Fire Edge
- Contained Line
- Closure/Roads
- Roads Open to Highway Legal Vehicles Only, Yearlong
- Roads Open to Highway Legal Vehicles Only, Seasonal
- State or US Highway
- Other Public Roads
- Private Roads
- 1 - RESPONSIBLE TO MOTORIZED VEHICLES
- 2 - RESTRICTED/LEGALLY GATED ADMIN USE
- 3 - BARRIRED/LEGALLY NO ADMIN USE
- 4 - OPEN DURING BEAR SEASON
- Roads Opened For Fire
- Decommissioned
- Closure/Access
- USFS
- State
- Other Private
- Private Timberlands
- Fire History
- Hazardous Fuel Treatment
- Structure Zones
- Community Control Lines

