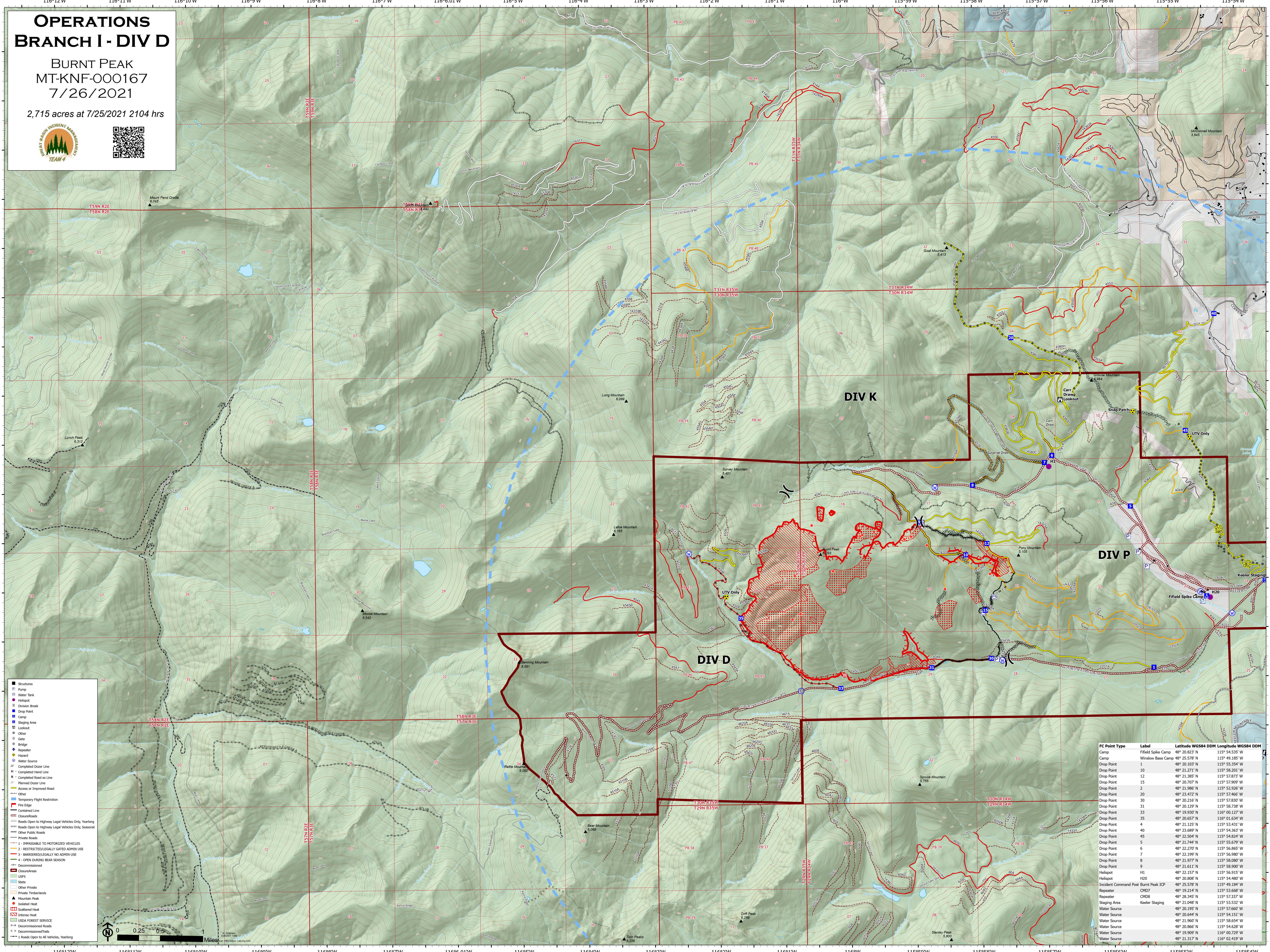


# OPERATIONS BRANCH I - DIV D

BURNT PEAK  
MT-KNF-000167  
7/26/2021

2,715 acres at 7/25/2021 2104 hrs



- Structures
- ⊠ Pump
- ⊠ Water Tank
- ⊠ Helibase
- ⊠ Division Break
- ⊠ Drop Point
- ⊠ Camp
- ⊠ Staging Area
- ⊠ Lookout
- ⊠ Other
- ⊠ Gate
- ⊠ Bridge
- ⊠ Repeater
- ⊠ Hazard
- ⊠ Water Source
- ⊠ Completed Deer Line
- H - Completed Hand Line
- R - Completed Road as Line
- ⊠ Planned Deer Line
- ⊠ Access or Improved Road
- ⊠ Other
- ⊠ Temporary Flight Restriction
- ⊠ Fire Edge
- ⊠ Contained Line
- ⊠ Closed Roads
- ⊠ Roads Open to Highway Legal Vehicles Only, Yearlong
- ⊠ Roads Open to Highway Legal Vehicles Only, Seasonal
- ⊠ Other Public Roads
- ⊠ Private Roads
- ⊠ 1 - IMPASSABLE TO MOTORIZED VEHICLES
- ⊠ 2 - RESTRICTED/LEGALLY GATED ADMIN USE
- ⊠ 3 - BARRIERED/LEGALLY NO ADMIN USE
- ⊠ 4 - OPEN DURING BEAR SEASON
- ⊠ Decommissioned
- ⊠ Closure Areas
- ⊠ USFS
- ⊠ State
- ⊠ Other Private
- ⊠ Private Timberlands
- ⊠ Mountain Peak
- ⊠ Isolated Heat
- ⊠ Scattered Heat
- ⊠ Intense Heat
- ⊠ Decommissioned Roads
- ⊠ Decommissioned Trails
- ⊠ 1 Roads Open to All Vehicles, Yearlong

FC Point Type	Label	Latitude WGS84 DDM	Longitude WGS84 DDM
Camp	Field Spike Camp	48° 20.823' N	115° 54.233' W
Camp	Window Base Camp	48° 25.578' N	115° 49.185' W
Drop Point	1	48° 20.103' N	115° 55.354' W
Drop Point	10	48° 21.271' N	115° 58.201' W
Drop Point	12	48° 21.385' N	115° 57.873' W
Drop Point	15	48° 20.707' N	115° 57.909' W
Drop Point	2	48° 21.986' N	115° 52.065' W
Drop Point	20	48° 23.472' N	115° 57.466' W
Drop Point	30	48° 20.216' N	115° 57.830' W
Drop Point	31	48° 20.129' N	115° 58.728' W
Drop Point	33	48° 19.930' N	116° 00.127' W
Drop Point	35	48° 20.657' N	116° 01.634' W
Drop Point	4	48° 21.125' N	115° 53.311' W
Drop Point	40	48° 23.689' N	115° 54.363' W
Drop Point	45	48° 22.504' N	115° 54.824' W
Drop Point	5	48° 21.744' N	115° 55.679' W
Drop Point	6	48° 22.270' N	115° 56.865' W
Drop Point	7	48° 22.199' N	115° 56.980' W
Drop Point	8	48° 21.977' N	115° 58.000' W
Drop Point	9	48° 21.611' N	115° 58.900' W
Hotspot	H1	48° 22.157' N	115° 56.915' W
Hotspot	H20	48° 20.808' N	115° 54.480' W
Incident Command Post	Burnt Peak ICP	48° 25.578' N	115° 49.184' W
Repeater	CM07	48° 19.214' N	115° 53.668' W
Repeater	CM08	48° 28.345' N	115° 57.327' W
Staging Area	Keelley Staging	48° 21.048' N	115° 53.532' W
Water Source		48° 20.195' N	115° 57.660' W
Water Source		48° 20.644' N	115° 54.151' W
Water Source		48° 21.960' N	115° 58.654' W
Water Source		48° 20.866' N	115° 54.628' W
Water Source		48° 19.908' N	116° 00.729' W
Water Source		48° 21.317' N	116° 02.419' W

