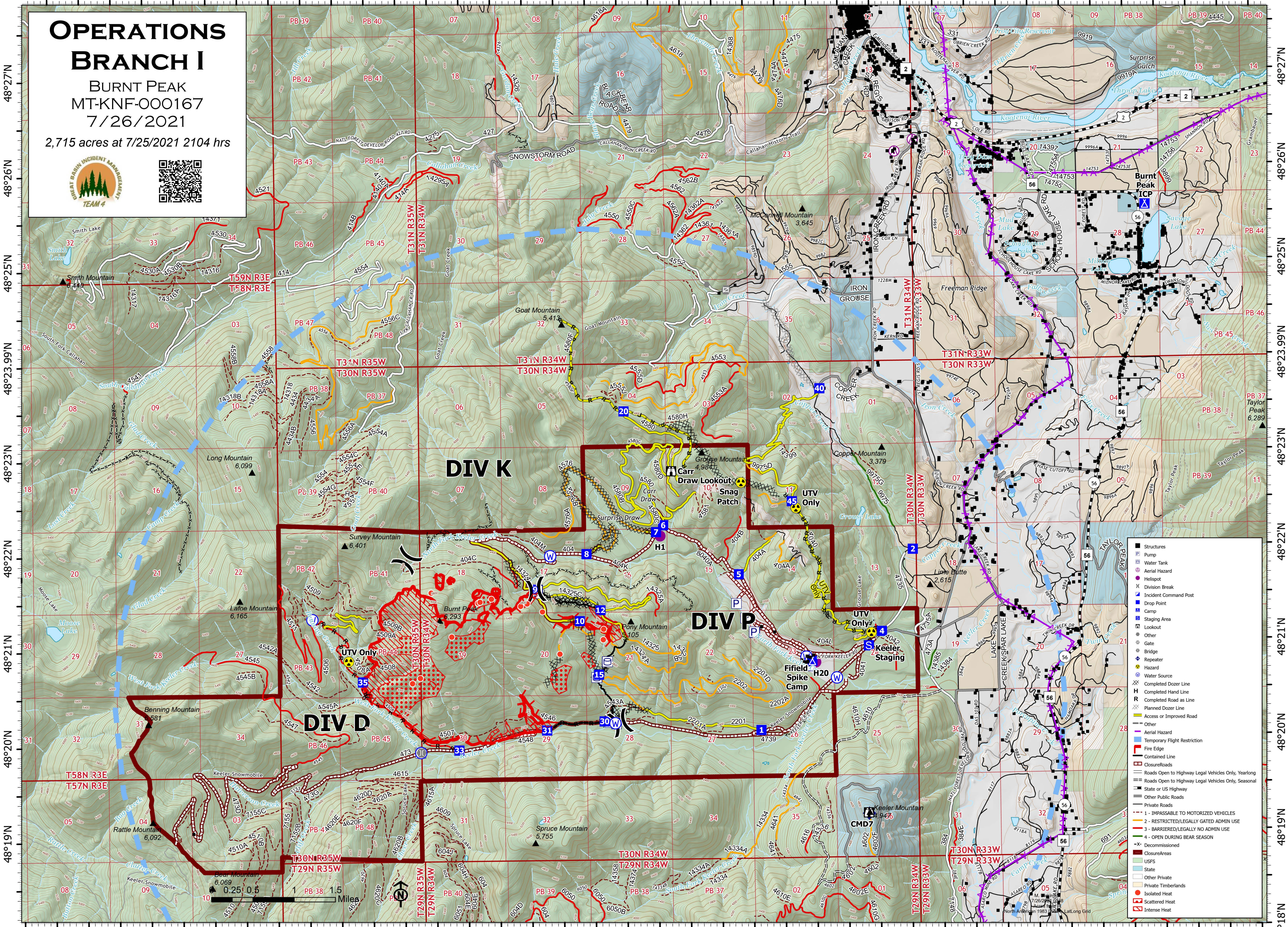


116°0.01'W 116°5'W 116°4'W 116°3'W 116°2'W 116°1'W 116°W 115°59'W 115°58'W 115°57'W 115°56'W 115°55'W 115°54'W 115°53'W 115°52'W 115°51.01'W 115°50'W 115°49'W 115°48'W

# OPERATIONS BRANCH I

BURNT PEAK  
MT-KNF-000167  
7/26/2021  
2,715 acres at 7/25/2021 2104 hrs



- Structures
- Pump
- Water Tank
- Aerial Hazard
- Helispot
- Division Break
- Incident Command Post
- Drop Point
- Camp
- Staging Area
- Lookout
- Other
- Gate
- Bridge
- Repeater
- Hazard
- Water Source
- Completed Dozer Line
- Completed Hand Line
- Completed Road as Line
- Planned Dozer Line
- Access or Improved Road
- Other
- Aerial Hazard
- Temporary Flight Restriction
- Fire Edge
- Contained Line
- Closure/Roads
- Roads Open to Highway Legal Vehicles Only, Yearlong
- Roads Open to Highway Legal Vehicles Only, Seasonal
- State or US Highway
- Other Public Roads
- Private Roads
- Private Timberlands
- Isolated Heat
- Scattered Heat
- Intense Heat

116°7'W 116°6.01'W 116°5'W 116°4'W 116°3'W 116°2'W 116°1'W 116°W 115°59'W 115°58'W 115°57'W 115°56'W 115°55'W 115°54'W 115°53'W 115°52'W 115°51.01'W 115°50'W 115°49'W 115°48'W

48°27'N  
48°26'N  
48°25'N  
48°23.99'N  
48°23'N  
48°22'N  
48°21'N  
48°20'N  
48°19'N

48°27'N  
48°26'N  
48°25'N  
48°23.99'N  
48°23'N  
48°22'N  
48°21'N  
48°20'N  
48°19'N

0.25 0.5 1 1.5 Miles