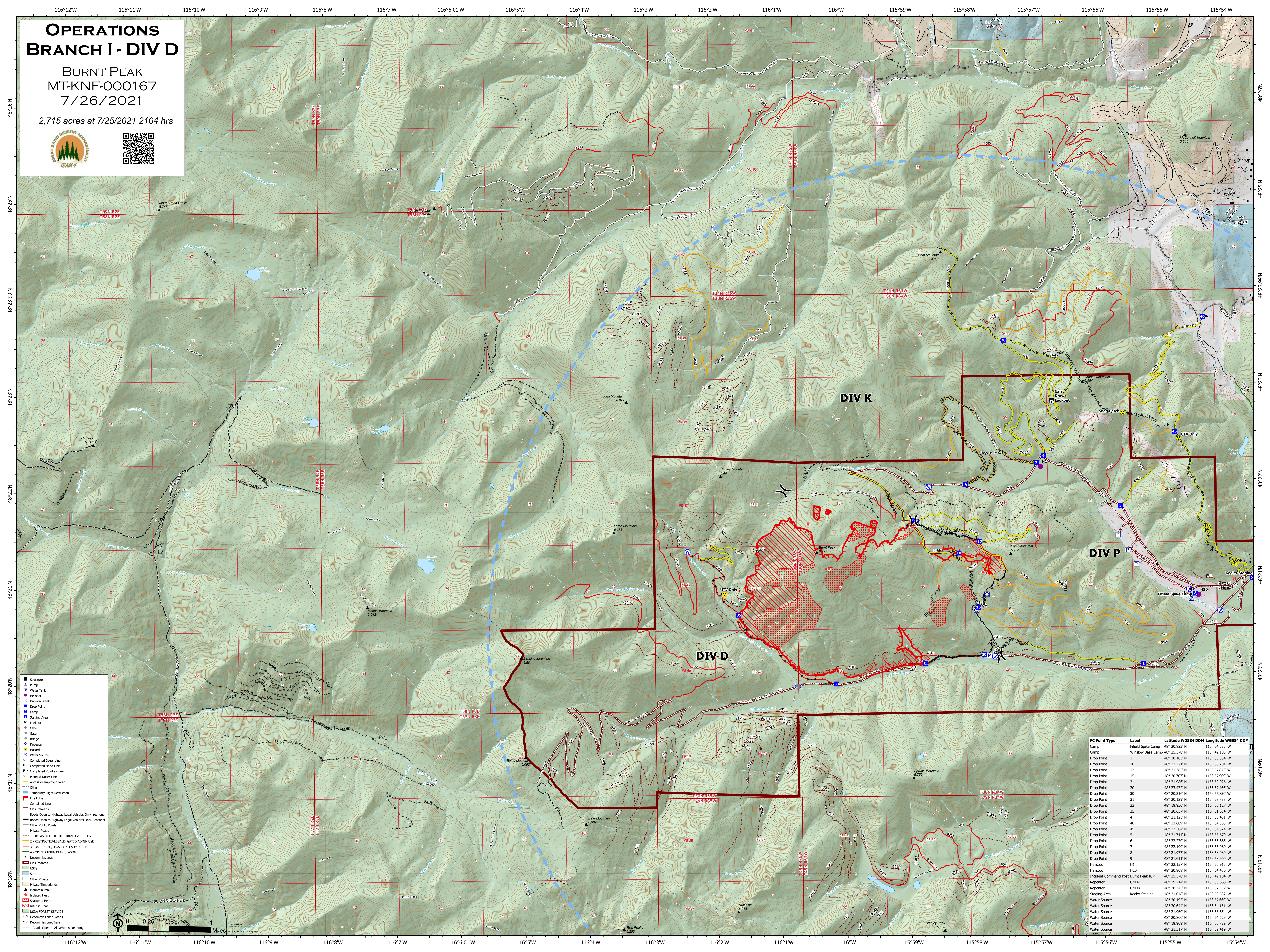


OPERATIONS BRANCH I - DIV D

BURNT PEAK
MT-KNF-000167
7/26/2021

2,715 acres at 7/25/2021 2104 hrs



| FC Point Type | Label | Latitude WGS84 DDM | Longitude WGS84 DDM |
|-----------------------|---------------------|--------------------|---------------------|
| Camp | Firfield Spike Camp | 48° 20.823' N | 115° 54.335' W |
| Camp | Window Base Camp | 48° 25.578' N | 115° 49.185' W |
| Drop Point | 1 | 48° 20.103' N | 115° 55.354' W |
| Drop Point | 10 | 48° 21.271' N | 115° 58.201' W |
| Drop Point | 12 | 48° 21.385' N | 115° 57.873' W |
| Drop Point | 15 | 48° 20.707' N | 115° 57.909' W |
| Drop Point | 2 | 48° 21.586' N | 115° 52.965' W |
| Drop Point | 20 | 48° 23.472' N | 115° 57.466' W |
| Drop Point | 30 | 48° 20.216' N | 115° 57.830' W |
| Drop Point | 31 | 48° 20.129' N | 115° 58.728' W |
| Drop Point | 33 | 48° 19.930' N | 116° 00.127' W |
| Drop Point | 35 | 48° 20.657' N | 116° 01.634' W |
| Drop Point | 4 | 48° 21.125' N | 115° 53.311' W |
| Drop Point | 40 | 48° 23.689' N | 115° 54.363' W |
| Drop Point | 45 | 48° 22.504' N | 115° 54.824' W |
| Drop Point | 5 | 48° 21.744' N | 115° 55.679' W |
| Drop Point | 6 | 48° 22.270' N | 115° 56.865' W |
| Drop Point | 7 | 48° 22.199' N | 115° 56.980' W |
| Drop Point | 8 | 48° 21.977' N | 115° 58.800' W |
| Drop Point | 9 | 48° 21.611' N | 115° 58.900' W |
| Helispot | H1 | 48° 22.157' N | 115° 56.915' W |
| Helispot | H20 | 48° 20.808' N | 115° 54.480' W |
| Incident Command Post | Burnt Peak ICP | 48° 25.578' N | 115° 49.184' W |
| Repeater | CHD7 | 48° 19.214' N | 115° 53.668' W |
| Repeater | CHD8 | 48° 28.245' N | 115° 57.237' W |
| Staging Area | Keeler Staging | 48° 21.048' N | 115° 53.532' W |
| Water Source | | 48° 20.195' N | 115° 57.660' W |
| Water Source | | 48° 20.644' N | 115° 54.151' W |
| Water Source | | 48° 21.967' N | 115° 58.654' W |
| Water Source | | 48° 20.866' N | 115° 54.628' W |
| Water Source | | 48° 19.909' N | 116° 00.729' W |
| Water Source | | 48° 21.317' N | 116° 02.419' W |

