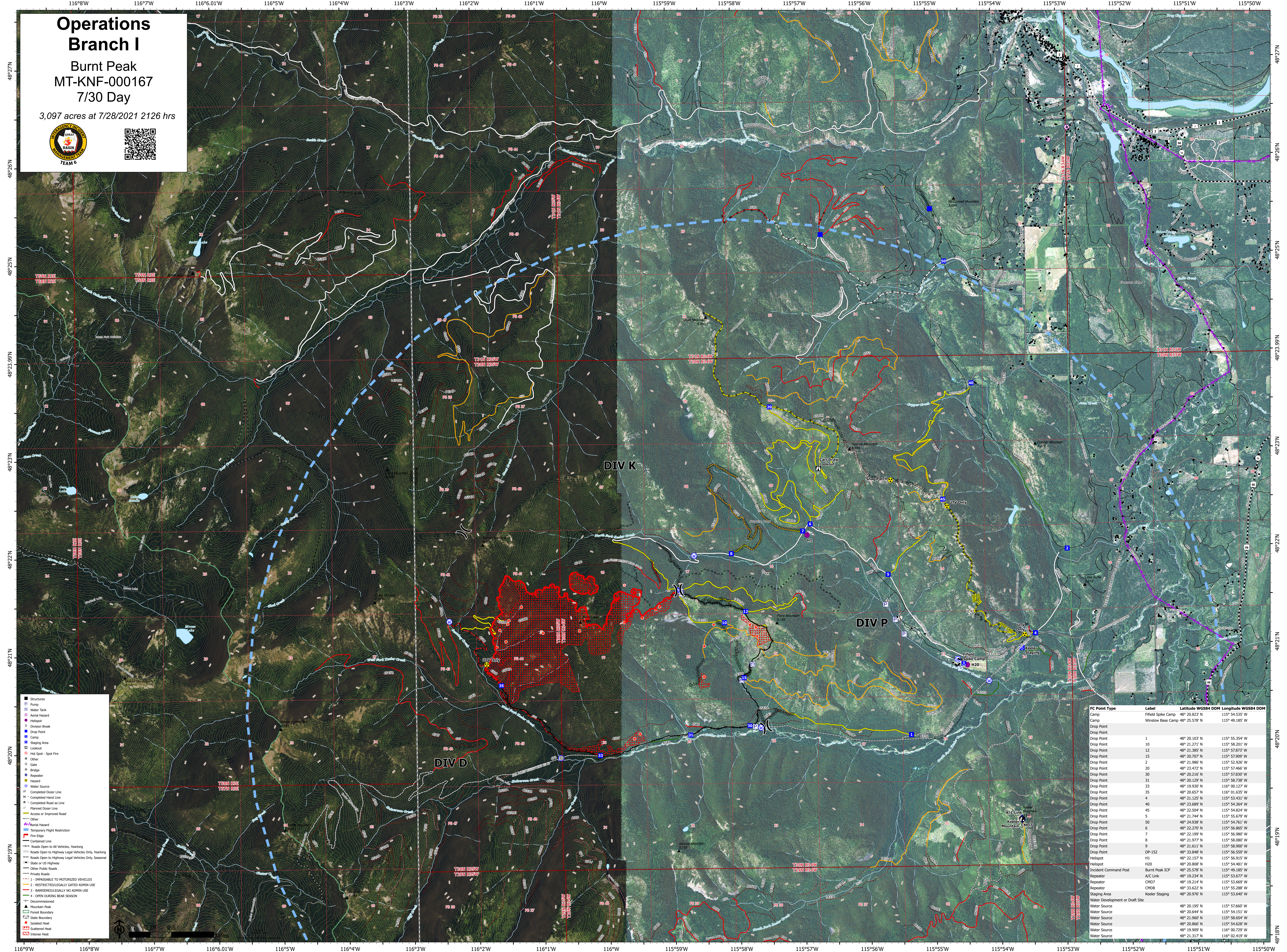


# Operations Branch I

Burnt Peak  
MT-KNF-000167  
7/30 Day

3,097 acres at 7/28/2021 2126 hrs



- Structures
- ⊠ Pump
- ⊠ Water Tank
- ⊠ Aerial Helipad
- ⊠ Helispot
- ⊠ Division Break
- ⊠ Drop Point
- ⊠ Camp
- ⊠ Staging Area
- ⊠ Lookout
- ⊠ Hot Spot - Spot Fire
- ⊠ Other
- ⊠ Gate
- ⊠ Bridge
- ⊠ Repeater
- ⊠ Helipad
- ⊠ Water Source
- ⊠ Completed Dozer Line
- ⊠ Completed Hand Line
- ⊠ Completed Road as Line
- ⊠ Planned Dozer Line
- ⊠ Access or Improved Road
- ⊠ Other
- ⊠ Aerial Helipad
- ⊠ Temporary Flight Restriction
- ⊠ Fire Edge
- ⊠ Contained Line
- ⊠ Roads Open to All Vehicles, Yearlong
- ⊠ Roads Open to Highway Legal Vehicles Only, Yearlong
- ⊠ Roads Open to Highway Legal Vehicles Only, Seasonal
- ⊠ State or US Highway
- ⊠ Other Public Roads
- ⊠ Private Roads
- ⊠ - IMPASSABLE TO MOTORIZED VEHICLES
- ⊠ - RESTRICTED/LEGALLY GATED ADMIN USE
- ⊠ - BARRIERED/LEGALLY NO ADMIN USE
- ⊠ - OPEN DURING BEAR SEASON
- ⊠ Discontiguous
- ⊠ Mountain Peak
- ⊠ Forest Boundary
- ⊠ State Boundary
- ⊠ Isolated Heat
- ⊠ Scattered Heat
- ⊠ Intense Heat

FC Point Type	Label	Latitude WGS84 DDM	Longitude WGS84 DDM
Camp	Fifield Spike Camp	48° 20.823' N	115° 54.535' W
Camp	Winslow Base Camp	48° 25.578' N	115° 49.185' W
Drop Point			
Drop Point	1	48° 20.103' N	115° 55.354' W
Drop Point	10	48° 21.271' N	115° 58.201' W
Drop Point	12	48° 21.385' N	115° 57.873' W
Drop Point	15	48° 20.707' N	115° 57.909' W
Drop Point	2	48° 21.986' N	115° 52.926' W
Drop Point	20	48° 23.472' N	115° 57.460' W
Drop Point	30	48° 20.216' N	115° 57.830' W
Drop Point	31	48° 20.129' N	115° 58.738' W
Drop Point	33	48° 19.930' N	116° 00.127' W
Drop Point	35	48° 20.657' N	116° 01.635' W
Drop Point	4	48° 21.125' N	115° 53.431' W
Drop Point	40	48° 23.689' N	115° 54.364' W
Drop Point	45	48° 22.504' N	115° 54.024' W
Drop Point	5	48° 21.744' N	115° 55.679' W
Drop Point	50	48° 24.938' N	115° 54.761' W
Drop Point	6	48° 22.270' N	115° 56.865' W
Drop Point	7	48° 22.199' N	115° 56.980' W
Drop Point	8	48° 21.977' N	115° 58.080' W
Drop Point	9	48° 22.161' N	115° 58.000' W
Drop Point	DP-152	48° 33.848' N	115° 56.559' W
Helispot	H1	48° 22.157' N	115° 56.915' W
Helispot	H20	48° 20.808' N	115° 54.481' W
Incident Command Post	Burnt Peak ICP	48° 25.578' N	115° 49.185' W
Repeater	A/C Link	48° 19.234' N	115° 53.677' W
Repeater	CHD7	48° 19.214' N	115° 53.669' W
Repeater	CHD8	48° 19.632' N	115° 55.088' W
Staging Area	Keeler Staging	48° 20.976' N	115° 53.640' W
Water Development or Draft Site			
Water Source		48° 20.195' N	115° 57.660' W
Water Source		48° 20.644' N	115° 54.151' W
Water Source		48° 21.960' N	115° 58.654' W
Water Source		48° 20.066' N	115° 54.026' W
Water Source		48° 19.909' N	116° 00.729' W
Water Source		48° 21.317' N	116° 02.419' W