

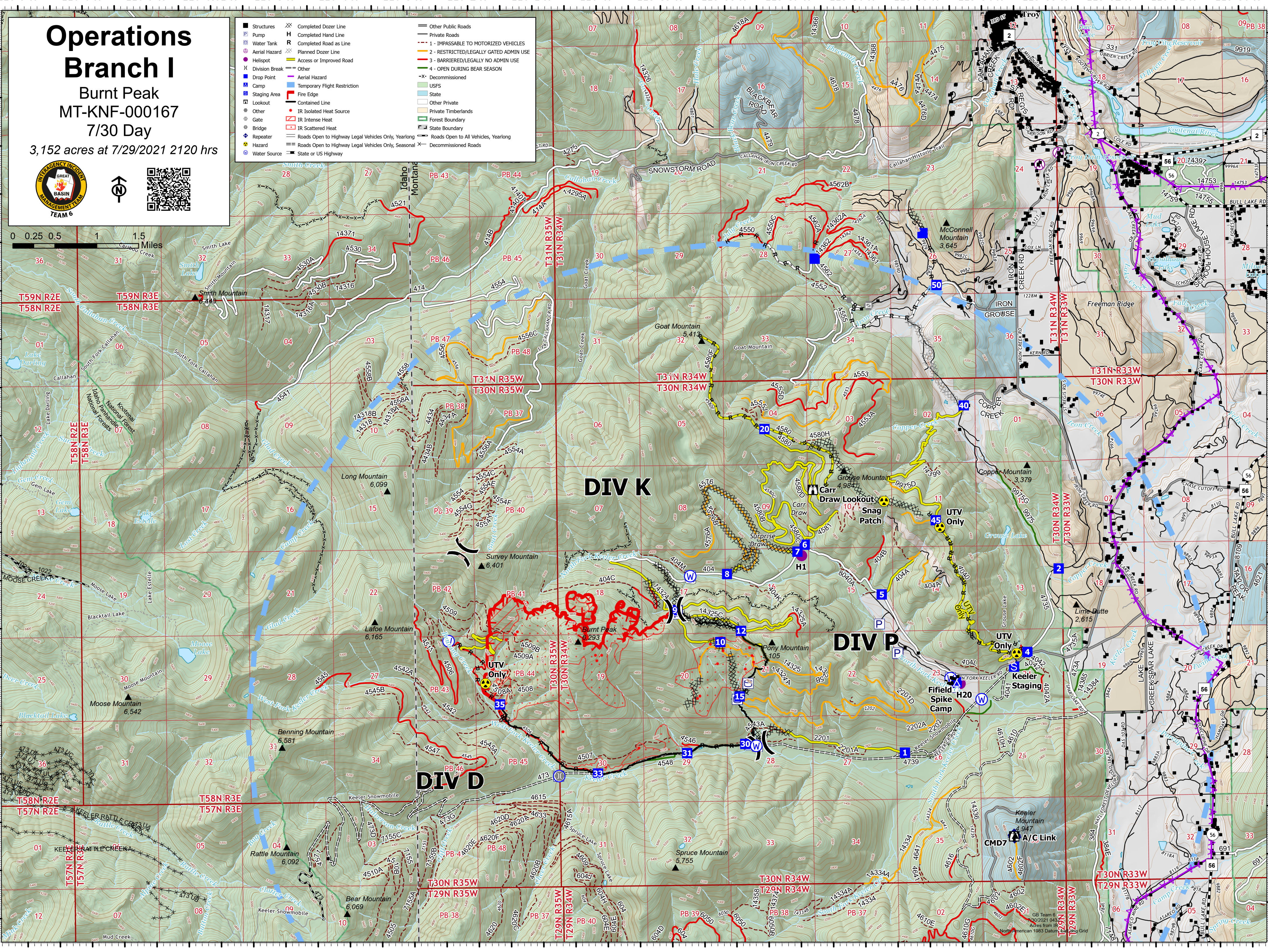
Operations Branch I

Burnt Peak
MT-KNF-000167
7/30 Day

3,152 acres at 7/29/2021 2120 hrs



Structures	Completed Dozer Line	Other Public Roads
Pump	Completed Hand Line	Private Roads
Water Tank	R Completed Road as Line	1 - IMPASSABLE TO MOTORIZED VEHICLES
Aerial Hazard	Planned Dozer Line	2 - RESTRICTED/LEGALLY GATED ADMIN USE
Helispot	Access or Improved Road	3 - BARRIERED/LEGALLY NO ADMIN USE
Division Break	Other	4 - OPEN DURING BEAR SEASON
Drop Point	Aerial Hazard	Decommissioned
Camp	Temporary Flight Restriction	USFS
Staging Area	Fire Edge	State
Lookout	Contained Line	Other Private
Other	IR Isolated Heat Source	Private Timberlands
Gate	IR Intense Heat	Forest Boundary
Bridge	IR Scattered Heat	State Boundary
Repeater	Roads Open to Highway Legal Vehicles Only, Yearlong	Roads Open to All Vehicles, Yearlong
Hazard	Roads Open to Highway Legal Vehicles Only, Seasonal	Decommissioned Roads
Water Source	State or US Highway	



116°9'W 116°8'W 116°7'W 116°6.01'W 116°5'W 116°4'W 116°3'W 116°2'W 116°1'W 116°W 115°59'W 115°58'W 115°57'W 115°56'W 115°55'W 115°54'W 115°53'W 115°52'W 115°51'W 115°50'W

48°27'N 48°26'N 48°25'N 48°23.99'N 48°23'N 48°22'N 48°21'N 48°20'N 48°19'N