

116°9'W 116°8'W 116°7'W 116°6.01'W 116°5'W 116°4'W 116°3'W 116°2'W 116°1'W 116°W 115°59'W 115°58'W 115°57'W 115°56'W 115°55'W 115°54'W 115°53'W 115°52'W 115°51'W 115°50'W

# OPERATIONS BRANCH I

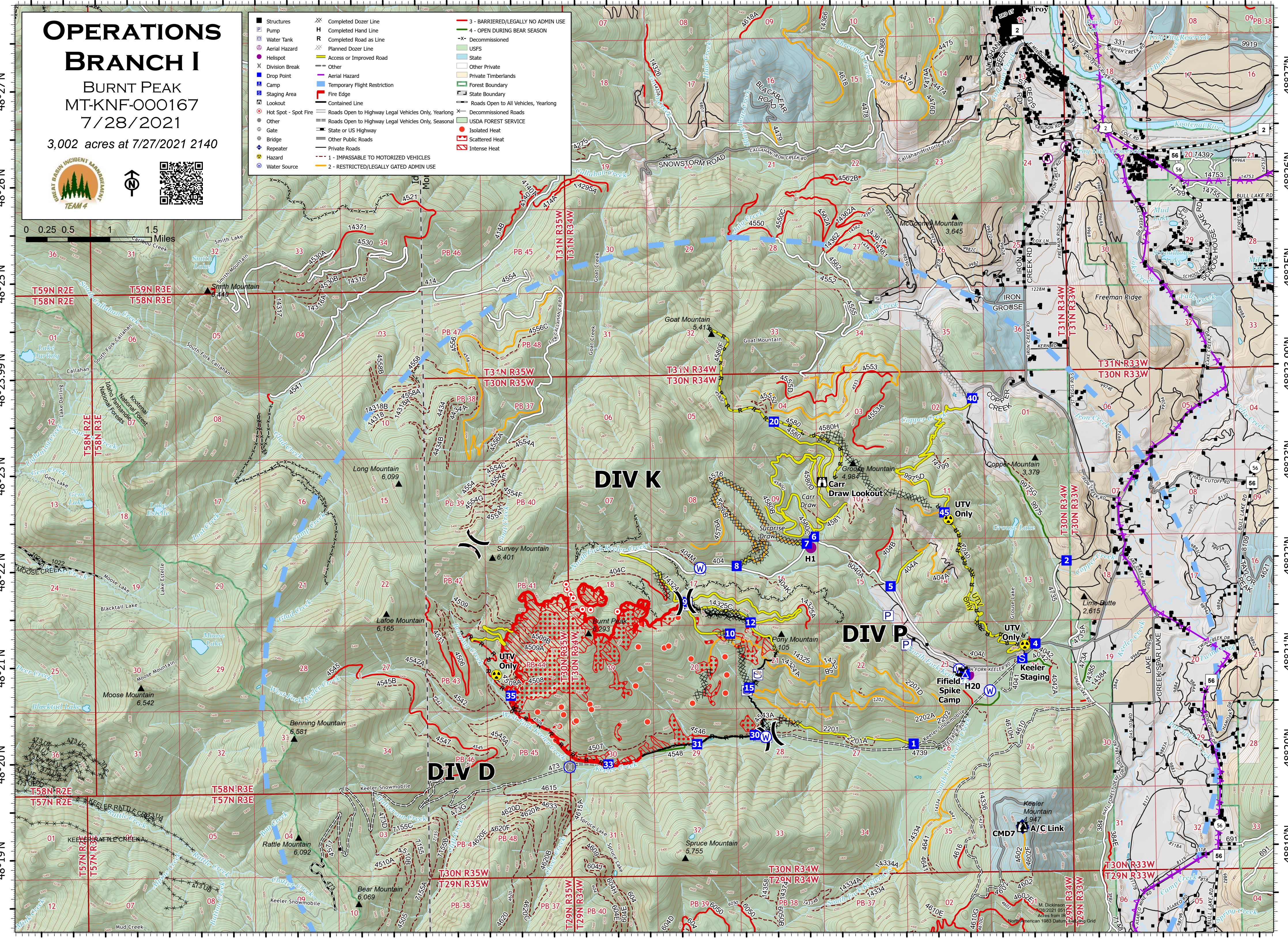
BURNT PEAK  
MT-KNF-000167  
7/28/2021

3,002 acres at 7/27/2021 2140



■ Structures	⊗ Completed Dozer Line	— 3 - BARRIERED/LEGALLY NO ADMIN USE
⊕ Pump	H Completed Hand Line	— 4 - OPEN DURING BEAR SEASON
⊕ Water Tank	R Completed Road as Line	-X Decommissioned
⊕ Aerial Hazard	⊗ Planned Dozer Line	USFS
⊕ Helispot	⊗ Access or Improved Road	State
⊕ Division Break	⊗ Other	Other Private
⊕ Drop Point	⊗ Aerial Hazard	Private Timberlands
⊕ Camp	⊗ Temporary Flight Restriction	Forest Boundary
⊕ Staging Area	⊗ Fire Edge	State Boundary
⊕ Lookout	⊗ Contained Line	Roads Open to All Vehicles, Yearlong
⊕ Hot Spot - Spot Fire	⊗ Roads Open to Highway Legal Vehicles Only, Yearlong	Decommissioned Roads
⊕ Other	⊗ Roads Open to Highway Legal Vehicles Only, Seasonal	USDA FOREST SERVICE
⊕ Gate	⊗ State or US Highway	Isolated Heat
⊕ Bridge	⊗ Other Public Roads	Scattered Heat
⊕ Repeater	⊗ Private Roads	Intense Heat
⊕ Hazard	⊗ 1 - IMPASSABLE TO MOTORIZED VEHICLES	
⊕ Water Source	⊗ 2 - RESTRICTED/LEGALLY GATED ADMIN USE	

0 0.25 0.5 1 1.5 Miles



116°9'W 116°8'W 116°7'W 116°6.01'W 116°5'W 116°4'W 116°3'W 116°2'W 116°1'W 116°W 115°59'W 115°58'W 115°57'W 115°56'W 115°55'W 115°54'W 115°53'W 115°52'W 115°51'W 115°50'W