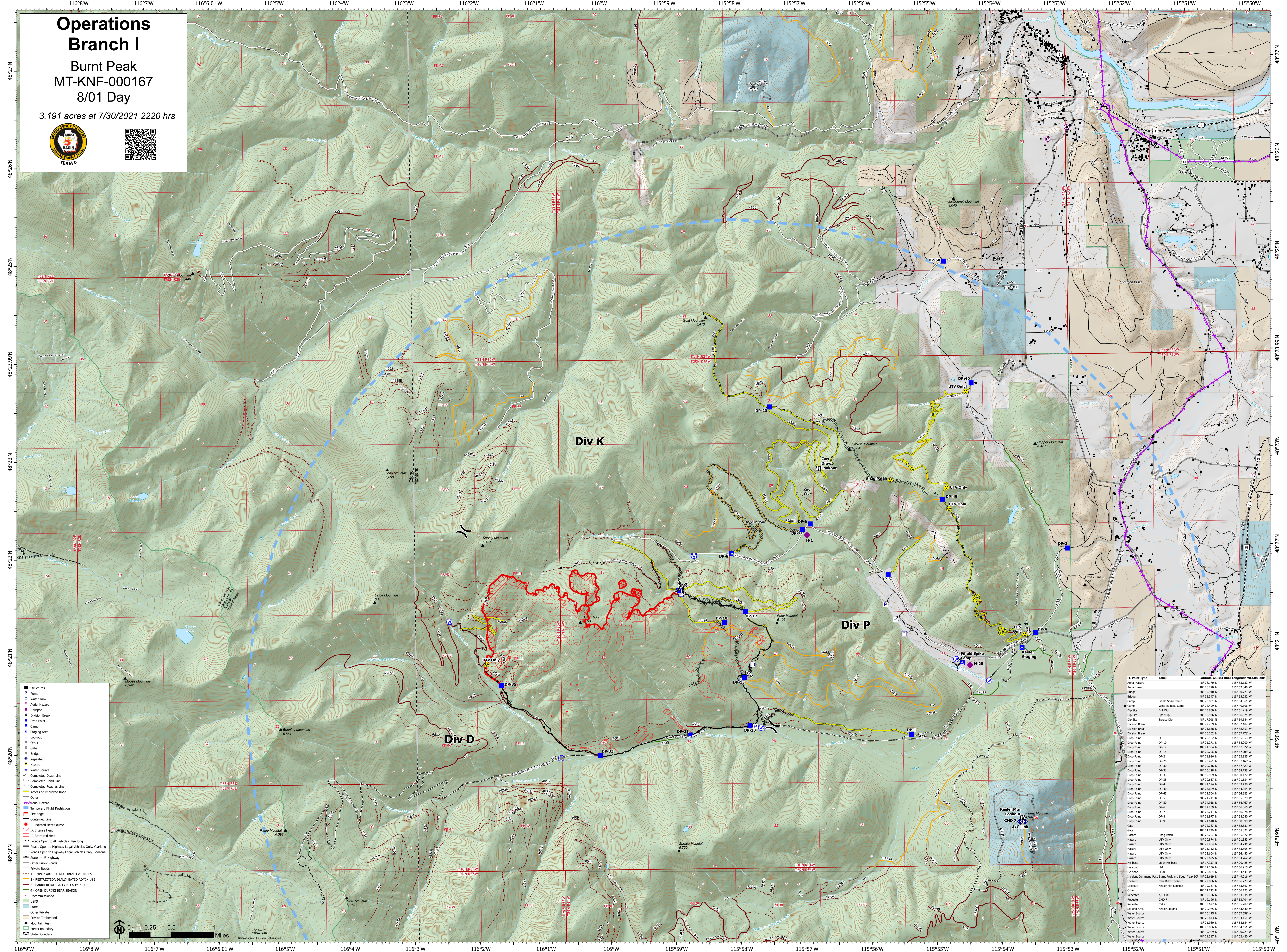


# Operations Branch I

Burnt Peak  
MT-KNF-000167  
8/01 Day

3,191 acres at 7/30/2021 2220 hrs



- Structures
- Pump
- Water Tank
- Aerial Hazard
- Helibase
- Division Break
- Drop Point
- Camp
- Staging Area
- Lookout
- Other
- Gate
- Bridge
- Repetitor
- Hazard
- Water Source
- Completed Door Line
- Completed Head Line
- Completed Road as Line
- Access or Improved Road
- Other
- Material Hazard
- Temporary Flight Restriction
- Fire Edge
- Contained Line
- IR Isolated Heat Source
- IR Intense Heat
- IR Scattered Heat
- Roads Open to All Vehicles, Yearlong
- Roads Open to Highway Legal Vehicles Only, Yearlong
- Roads Open to Highway Legal Vehicles Only, Seasonal
- State or US Highway
- Other Public Roads
- Private Roads
- 1 - IMPASSIBLE TO MOTORIZED VEHICLES
- 2 - RESTRICTED/LEGALLY GATED ADMIN USE
- 3 - BARRIERED/LEGALLY NO ADMIN USE
- 4 - OPEN DURING BEAR SEASON
- Decommissioned
- LIGS
- State
- Other Private
- Private Timberlands
- Mountain Peak
- Forest Boundary
- State Boundary



FC Point Type	Label	Latitude WGS84 DDM	Longitude WGS84 DDM
Aerial Hazard		48° 26.170' N	115° 51.321' W
Bridge		48° 19.910' N	115° 52.840' W
Bridge		48° 19.910' N	115° 00.233' W
Bridge		48° 25.347' N	115° 55.021' W
Camp	Fielded Spike Camp	48° 20.411' N	115° 54.561' W
Camp	Window Base Camp	48° 25.499' N	115° 49.100' W
Drop Site	IRU/DP	48° 15.860' N	115° 51.000' W
Drop Site	Spur Dip	48° 15.976' N	115° 56.574' W
Drop Site	Source Dip	48° 17.906' N	115° 59.594' W
Division Break		48° 22.239' N	115° 02.140' W
Division Break		48° 21.638' N	115° 58.853' W
Division Break		48° 20.202' N	115° 57.476' W
Drop Point	DP-1	48° 20.102' N	115° 55.210' W
Drop Point	DP-10	48° 21.271' N	115° 58.200' W
Drop Point	DP-12	48° 21.384' N	115° 57.822' W
Drop Point	DP-15	48° 20.700' N	115° 57.000' W
Drop Point	DP-2	48° 21.980' N	115° 52.825' W
Drop Point	DP-20	48° 23.472' N	115° 57.460' W
Drop Point	DP-25	48° 20.248' N	115° 57.600' W
Drop Point	DP-31	48° 20.128' N	115° 58.738' W
Drop Point	DP-33	48° 19.820' N	115° 03.370' W
Drop Point	DP-35	48° 20.607' N	115° 01.654' W
Drop Point	DP-4	48° 21.244' N	115° 53.430' W
Drop Point	DP-45	48° 23.080' N	115° 56.340' W
Drop Point	DP-45	48° 22.504' N	115° 54.823' W
Drop Point	DP-5	48° 21.744' N	115° 56.670' W
Drop Point	DP-6	48° 22.269' N	115° 56.865' W
Drop Point	DP-6	48° 22.269' N	115° 56.865' W
Drop Point	DP-7	48° 22.211' N	115° 56.970' W
Drop Point	DP-8	48° 21.077' N	115° 56.000' W
Drop Point	DP-9	48° 21.610' N	115° 58.890' W
Gate		48° 22.707' N	115° 52.531' W
Gate		48° 24.730' N	115° 55.210' W
Hazard	Snag Patch	48° 22.707' N	115° 55.622' W
Hazard	UTV Only	48° 20.244' N	115° 01.851' W
Hazard	UTV Only	48° 22.000' N	115° 54.711' W
Hazard	UTV Only	48° 21.112' N	115° 53.595' W
Hazard	UTV Only	48° 23.604' N	115° 54.401' W
Hazard	UTV Only	48° 20.244' N	115° 56.340' W
Helibase	Libby Helibase	48° 17.859' N	115° 29.425' W
Helibase	N-1	48° 22.150' N	115° 56.815' W
Helibase	N-20	48° 20.804' N	115° 54.441' W
Incident Command Post	Burnt Peak and South Peak ICP	48° 25.619' N	115° 49.210' W
Lookout	Carr Draw Lookout	48° 22.880' N	115° 53.830' W
Lookout	Keeler Mtn Lookout	48° 19.237' N	115° 53.667' W
Other	Keeler Mtn Lookout	48° 24.793' N	115° 56.123' W
Repetitor	A/C Link	48° 20.910' N	115° 53.800' W
Repetitor	CHM 7	48° 19.196' N	115° 53.704' W
Repetitor	CHM 7	48° 19.196' N	115° 57.690' W
Repetitor	CHM 7	48° 19.196' N	115° 57.690' W
Repetitor	CHM 7	48° 19.196' N	115° 57.690' W
Water Source	Keeler Staging	48° 20.512' N	115° 54.511' W
Water Source		48° 20.512' N	115° 54.511' W
Water Source		48° 20.866' N	115° 54.651' W
Water Source		48° 19.969' N	115° 00.750' W
Water Source		48° 21.317' N	115° 02.200' W