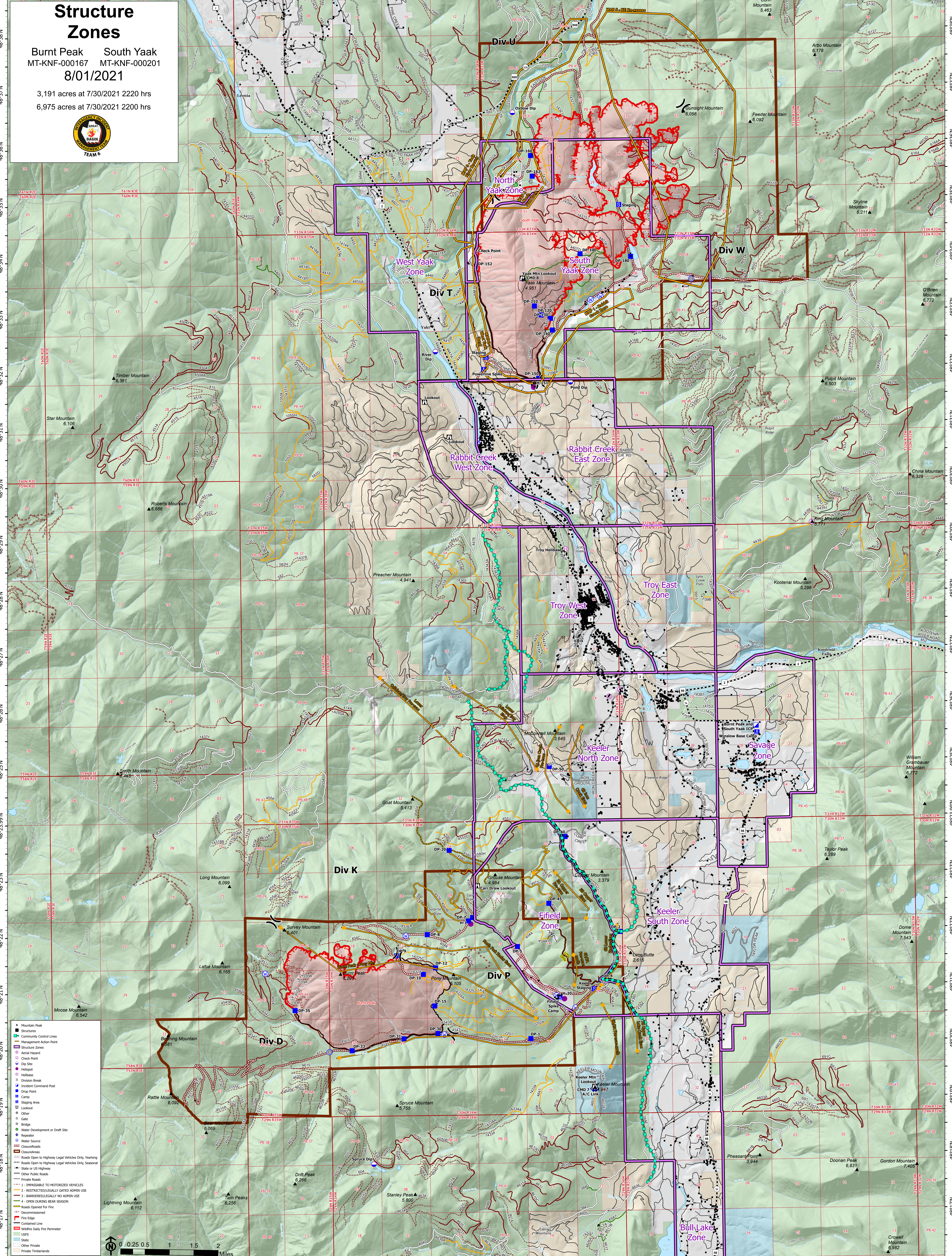


# Structure Zones

Burnt Peak South Yaak  
MT-KNF-000167 MT-KNF-000201  
8/01/2021

3,191 acres at 7/30/2021 2220 hrs  
6,975 acres at 7/30/2021 2200 hrs



- Mountain Peak
- Community Control Lines
- Management Action Point
- Structure Zones
- Aerial Hazard
- Check Point
- Dip Site
- Helipoint
- Helibase
- Division Break
- Incident Command Post
- Drop Point
- Camp
- Staging Area
- Lookout
- Other
- Gate
- Bridge
- Water Development or Draft Site
- Repeater
- Water Source
- Closure/Address
- Roads Open to Highway Legal Vehicles Only, Yearlong
- Roads Open to Highway Legal Vehicles Only, Seasonal
- State or US Highway
- Other Public Roads
- Private Roads
- 1 - IMPASSABLE TO MOTORIZED VEHICLES
- 2 - RESTRICTED/IDEALLY GATED ADMIN USE
- 3 - BARRIERED/IDEALLY NO ADMIN USE
- 4 - OPEN DURING BEAR SEASON
- Roads Opened for Fire
- Decommissioned
- Fire Edge
- Contained Line
- Wildfire Daily Fire Perimeter
- USFS
- State
- Other Private
- Private Timberlands

