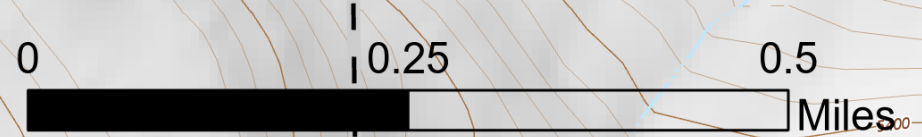


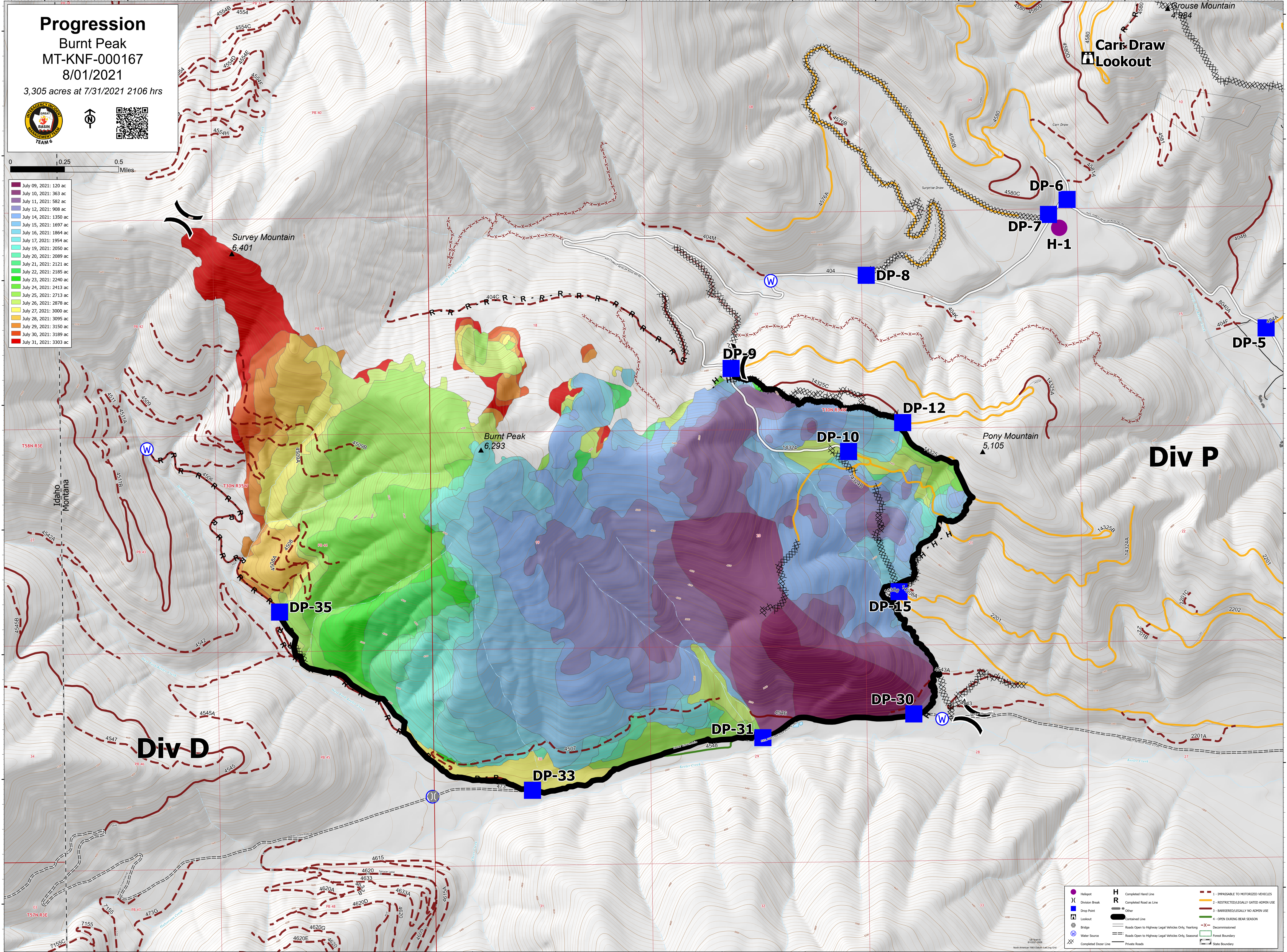
Progression

Burnt Peak
MT-KNF-000167
8/01/2021

3,305 acres at 7/31/2021 2106 hrs



July 09, 2021: 120 ac
July 10, 2021: 363 ac
July 11, 2021: 582 ac
July 12, 2021: 908 ac
July 14, 2021: 1350 ac
July 15, 2021: 1697 ac
July 16, 2021: 1864 ac
July 17, 2021: 1954 ac
July 19, 2021: 2050 ac
July 20, 2021: 2089 ac
July 21, 2021: 2121 ac
July 22, 2021: 2185 ac
July 23, 2021: 2240 ac
July 24, 2021: 2413 ac
July 25, 2021: 2713 ac
July 26, 2021: 2878 ac
July 27, 2021: 3000 ac
July 28, 2021: 3095 ac
July 29, 2021: 3150 ac
July 30, 2021: 3189 ac
July 31, 2021: 3303 ac



Helipoint	Completed Hand Line	1 - IMPASSIBLE TO MOTORIZED VEHICLES
Division Break	Completed Road as Line	2 - RESTRICTED/LEGALLY GATED ADMIN USE
Drop Point	Other	3 - BARRENDED/LEGALLY NO ADMIN USE
Lookout	Contained Line	4 - OPEN DURING BEAR SEASON
Water Source	Roads Open to Highway Legal Vehicles Only, Yearlong	Decommissioned
Completed Deer Line	Roads Open to Highway Legal Vehicles Only, Seasonal	Forest Boundary
	Private Roads	State Boundary