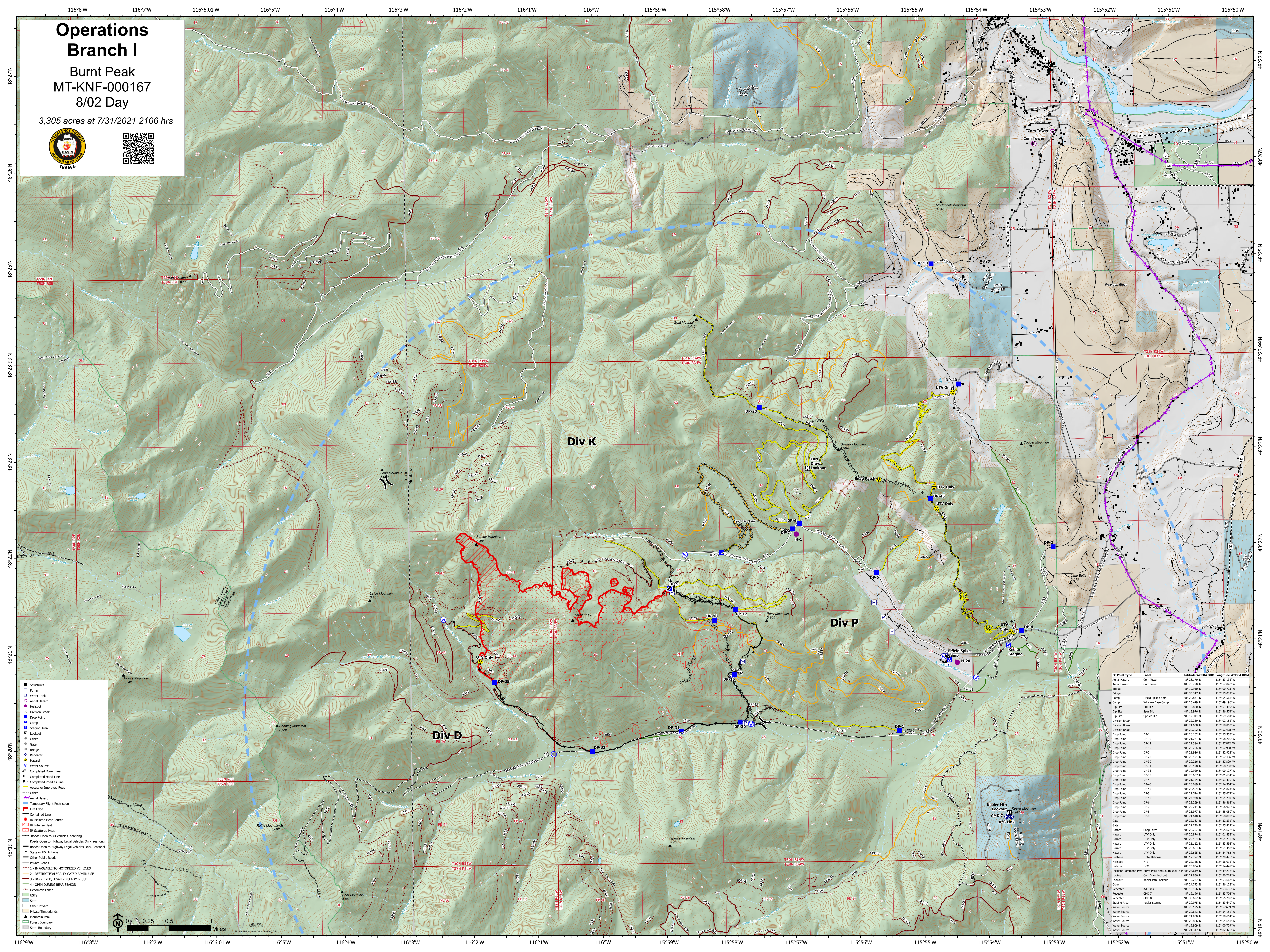


Operations Branch I

Burnt Peak
MT-KNF-000167
8/02 Day

3,305 acres at 7/31/2021 2106 hrs



- Structures
- Pump
- Water Tank
- Aerial Hazard
- Helipoint
- Division Break
- Other
- Gate
- Bridge
- Repeater
- Hazard
- Water Source
- Completed Dozer Line
- Completed Hand Line
- Restricted/Legally Gated Admin Use
- Access to Improved Road
- Other
- Aerial Hazard
- Temporary Flight Restriction
- Fire Edge
- Contained Line
- IR Isolated Heat Source
- IR Intense Heat
- IR Scattered Heat
- Roads Open to All Vehicles, Yearling
- Roads Open to Highway Legal Vehicles Only, Yearling
- Roads Open to Highway Legal Vehicles Only, Seasonal
- State or US Highway
- Other Public Roads
- Private Roads
- IMPASSABLE TO MOTORIZED VEHICLES
- RESTRICTED/LEGALLY GATED ADMIN USE
- BARRIER/LEGALLY NO ADMIN USE
- OPEN DURING BEAR SEASON
- Decommissioned
- USPS
- State
- Other Private
- Private Timberlands
- Mountain Peak
- Forest Boundary
- State Boundary

FC Point Type	Label	UTM X	UTM Y	UTM Z
Aerial Hazard	Com Tower	48° 26.197' N	115° 53.132' W	1159
Aerial Hazard	Com Tower	48° 26.200' N	115° 52.840' W	1159
Bridge		48° 18.005' N	115° 40.502' W	1159
Bridge		48° 35.347' N	115° 55.032' W	1159
Camp	Fifield Spike Camp	48° 20.831' N	115° 54.561' W	1159
Camp	Window Face Camp	48° 25.469' N	115° 49.520' W	1159
Camp		48° 15.860' N	115° 51.419' W	1159
Camp		48° 15.976' N	115° 56.574' W	1159
Camp		48° 12.966' N	115° 59.504' W	1159
Division Break		48° 22.239' N	116° 02.182' W	1159
Division Break		48° 20.202' N	115° 57.478' W	1159
Drop Point	DP-1	48° 20.102' N	115° 55.353' W	1159
Drop Point	DP-2	48° 21.271' N	115° 58.527' W	1159
Drop Point	DP-3	48° 21.364' N	115° 57.827' W	1159
Drop Point	DP-4	48° 20.700' N	115° 57.900' W	1159
Drop Point	DP-5	48° 21.860' N	115° 52.920' W	1159
Drop Point	DP-6	48° 23.471' N	115° 57.466' W	1159
Drop Point	DP-7	48° 20.210' N	115° 57.820' W	1159
Drop Point	DP-8	48° 20.200' N	115° 58.200' W	1159
Drop Point	DP-9	48° 19.929' N	116° 01.127' W	1159
Drop Point	DP-10	48° 20.657' N	116° 01.654' W	1159
Drop Point	DP-11	48° 21.247' N	115° 53.507' W	1159
Drop Point	DP-12	48° 23.689' N	115° 54.354' W	1159
Drop Point	DP-13	48° 22.556' N	115° 54.822' W	1159
Drop Point	DP-14	48° 21.744' N	115° 55.679' W	1159
Drop Point	DP-15	48° 24.938' N	115° 54.260' W	1159
Drop Point	DP-16	48° 23.269' N	115° 56.867' W	1159
Drop Point	DP-17	48° 22.211' N	115° 56.978' W	1159
Drop Point	DP-18	48° 21.977' N	115° 58.002' W	1159
Drop Point	DP-19	48° 23.602' N	115° 58.000' W	1159
Drop Point	DP-20	48° 22.767' N	115° 52.531' W	1159
Gate		48° 24.730' N	115° 55.822' W	1159
Hazard	Snap Patch	48° 22.007' N	115° 55.627' W	1159
Hazard	UTV Only	48° 20.874' N	116° 01.853' W	1159
Hazard	UTV Only	48° 22.608' N	115° 54.503' W	1159
Hazard	UTV Only	48° 21.112' N	115° 53.950' W	1159
Hazard	UTV Only	48° 23.604' N	115° 54.450' W	1159
Hazard	UTV Only	48° 22.825' N	115° 54.827' W	1159
Helibase	Libby Helibase	48° 17.059' N	115° 26.425' W	1159
Helipoint	H-1	48° 22.150' N	115° 56.913' W	1159
Helipoint	H-2	48° 22.150' N	115° 56.913' W	1159
Incident Command Post	Burnt Peak and South Yank 3CP	48° 25.619' N	115° 49.216' W	1159
Lookout	Carr Draw Lookout	48° 22.830' N	115° 56.728' W	1159
Lookout	Keeler Mtn Lookout	48° 19.237' N	115° 53.467' W	1159
Other		48° 24.793' N	115° 56.123' W	1159
Repeater	A/C Link	48° 19.190' N	115° 53.830' W	1159
Repeater	CHD 7	48° 20.975' N	115° 53.847' W	1159
Repeater	CHD 8	48° 33.622' N	115° 55.287' W	1159
Staging Area	Keeler Staging	48° 20.195' N	115° 53.847' W	1159
Water Source		48° 20.647' N	115° 54.151' W	1159
Water Source		48° 21.907' N	115° 53.847' W	1159
Water Source		48° 20.860' N	115° 54.651' W	1159
Water Source		48° 19.909' N	116° 00.729' W	1159
Water Source		48° 21.317' N	116° 01.407' W	1159

