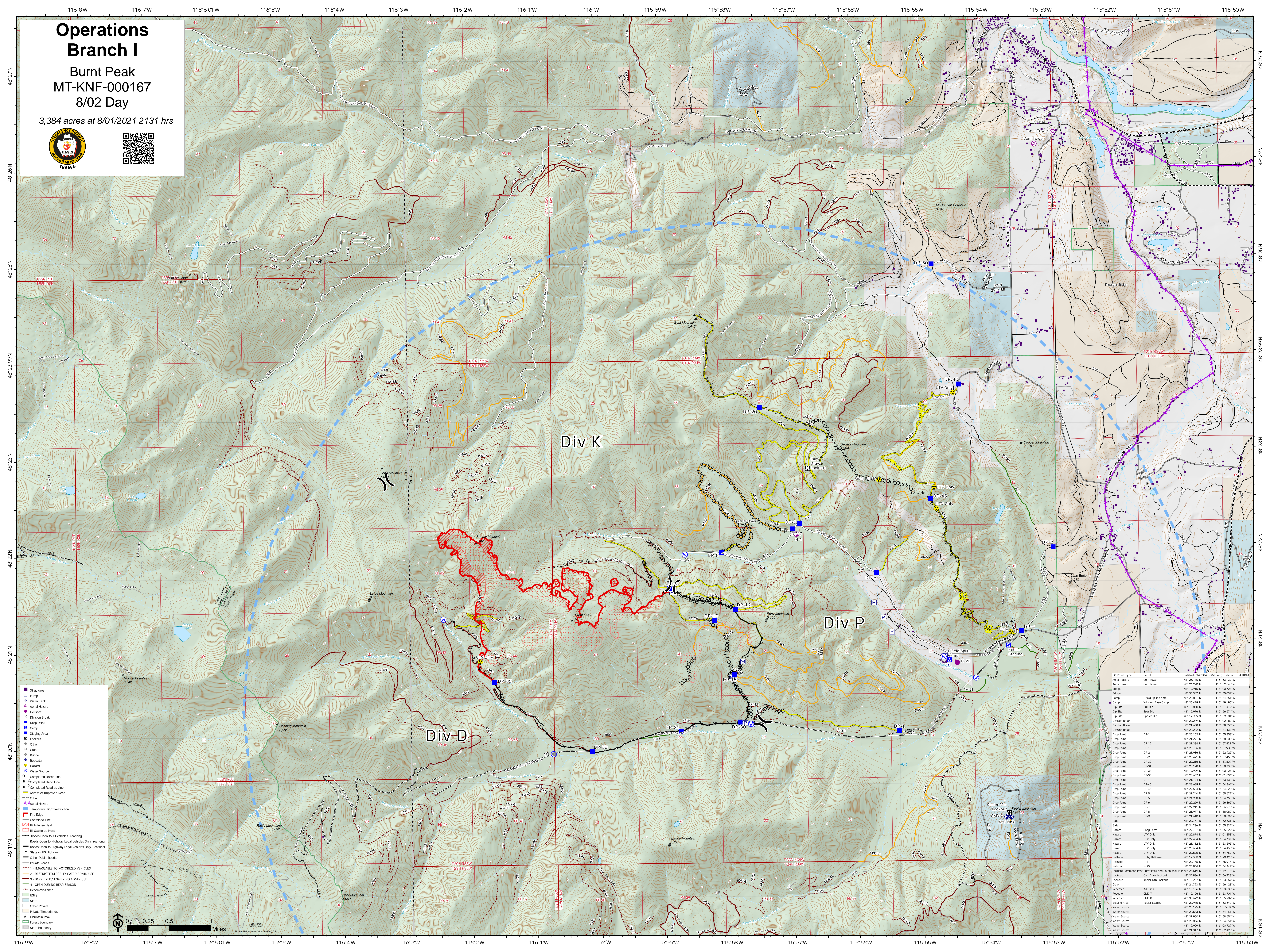


Operations Branch I

Burnt Peak
MT-KNF-000167
8/02 Day

3,384 acres at 8/01/2021 2131 hrs

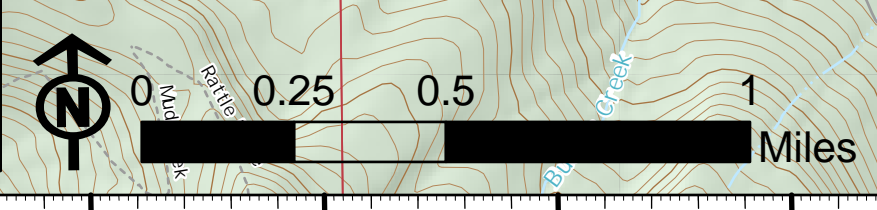


Div K

Div P

Div-D

- Structures
- Pump
- Water Tank
- Aerial Hazard
- Helipad
- Division Break
- Drop Point
- Camp
- Staging Area
- Lookout
- Other
- Gate
- Bridge
- Repetier
- Hazard
- Water Source
- Completed Dozer Line
- Completed Road Line
- Completed Road as Line
- Access or Improved Road
- Other
- Aerial Hazard
- Temporary Flight Restriction
- Fire Edge
- Contained Line
- IR Intense Heat
- IR Scattered Heat
- Roads Open to All Vehicles, Yearling
- Roads Open to Highway Legal Vehicles Only, Yearling
- Roads Open to Highway Legal Vehicles Only, Seasonal
- State or US Highway
- Other Public Roads
- Private Roads
- 1 - IMPASSABLE TO MOTORIZED VEHICLES
- 2 - RESTRICTED/LEGALLY GATED ADMIN USE
- 3 - BARBERED/LEGALLY NO ADMIN USE
- 4 - OPEN DURING BEAR SEASON
- Decommissioned
- USFS
- State
- Other Private
- Private Timbers
- Mountain Peak
- Forest Boundary
- State Boundary



F/C Point Type	Label	Latitude	Longitude	DNM	Length	WGS84 DTM
Aerial Hazard	Com Tower	48° 26.170' N	115° 53.132' W			
Aerial Hazard	Com Tower	48° 26.200' N	115° 52.840' W			
Bridge		48° 18.902' N	115° 52.722' W			
Bridge		48° 35.347' N	115° 55.032' W			
Camp	Filled Spike Camp	48° 20.837' N	115° 54.561' W			
Camp	Window Tree Camp	48° 25.489' N	115° 49.156' W			
Dip Site	Butt Dip	48° 15.862' N	115° 51.419' W			
Dip Site	Spear Dip	48° 15.916' N	115° 56.514' W			
Dip Site	Spencer Dip	48° 11.966' N	115° 49.544' W			
Division Break		48° 22.239' N	116° 02.182' W			
Division Break		48° 21.638' N	115° 58.852' W			
Division Break		48° 20.202' N	115° 53.478' W			
Drop Point	DP-1	48° 30.102' N	115° 53.353' W			
Drop Point	DP-2	48° 21.271' N	115° 58.252' W			
Drop Point	DP-3	48° 21.864' N	115° 52.924' W			
Drop Point	DP-12	48° 21.304' N	115° 51.872' W			
Drop Point	DP-15	48° 20.706' N	115° 51.908' W			
Drop Point	DP-16	48° 21.864' N	115° 52.924' W			
Drop Point	DP-20	48° 23.411' N	115° 51.466' W			
Drop Point	DP-25	48° 20.216' N	115° 51.827' W			
Drop Point	DP-26	48° 20.128' N	115° 58.252' W			
Drop Point	DP-28	48° 19.429' N	116° 01.127' W			
Drop Point	DP-30	48° 20.657' N	116° 01.434' W			
Drop Point	DP-31	48° 21.524' N	115° 53.832' W			
Drop Point	DP-40	48° 23.689' N	115° 54.364' W			
Drop Point	DP-45	48° 22.558' N	115° 54.823' W			
Drop Point	DP-5	48° 21.144' N	115° 55.619' W			
Drop Point	DP-50	48° 24.938' N	115° 54.760' W			
Drop Point	DP-6	48° 22.269' N	115° 56.840' W			
Drop Point	DP-7	48° 22.211' N	115° 56.918' W			
Drop Point	DP-8	48° 21.977' N	115° 58.080' W			
Drop Point	DP-9	48° 21.602' N	115° 58.989' W			
Gate		48° 22.767' N	115° 52.531' W			
Gate	Snap Patch	48° 24.736' N	115° 55.822' W			
Hazard	UTV Only	48° 20.874' N	116° 01.863' W			
Hazard	UTV Only	48° 22.404' N	115° 54.731' W			
Hazard	UTV Only	48° 21.172' N	115° 53.976' W			
Hazard	UTV Only	48° 23.404' N	115° 54.453' W			
Hazard	UTV Only	48° 22.625' N	115° 54.823' W			
Hillbabe	Lobby Hillbabe	48° 17.059' N	115° 29.425' W			
Helipad	H-1	48° 22.156' N	115° 56.913' W			
Helipad	H-2	48° 22.107' N	115° 54.841' W			
Incident Command Post	Burnt Peak and South Yank IOP	48° 25.619' N	115° 49.216' W			
Lookout	Carr Drive Lookout	48° 22.836' N	115° 56.728' W			
Lookout	Keeler Mts Lookout	48° 19.227' N	115° 53.467' W			
Other		48° 24.762' N	115° 54.123' W			
Repeater	A/C Link	48° 19.146' N	115° 53.625' W			
Repeater	CMB 7	48° 21.196' N	115° 53.927' W			
Repeater	CMB 8	48° 33.422' N	115° 55.287' W			
Staging Area	Keeler Staging	48° 20.915' N	115° 53.842' W			
Water Source		48° 20.866' N	115° 54.601' W			
Water Source		48° 20.643' N	115° 54.151' W			
Water Source		48° 21.962' N	115° 58.624' W			
Water Source		48° 20.866' N	115° 54.601' W			
Water Source		48° 19.409' N	116° 00.729' W			
Water Source		48° 21.317' N	116° 01.031' W			