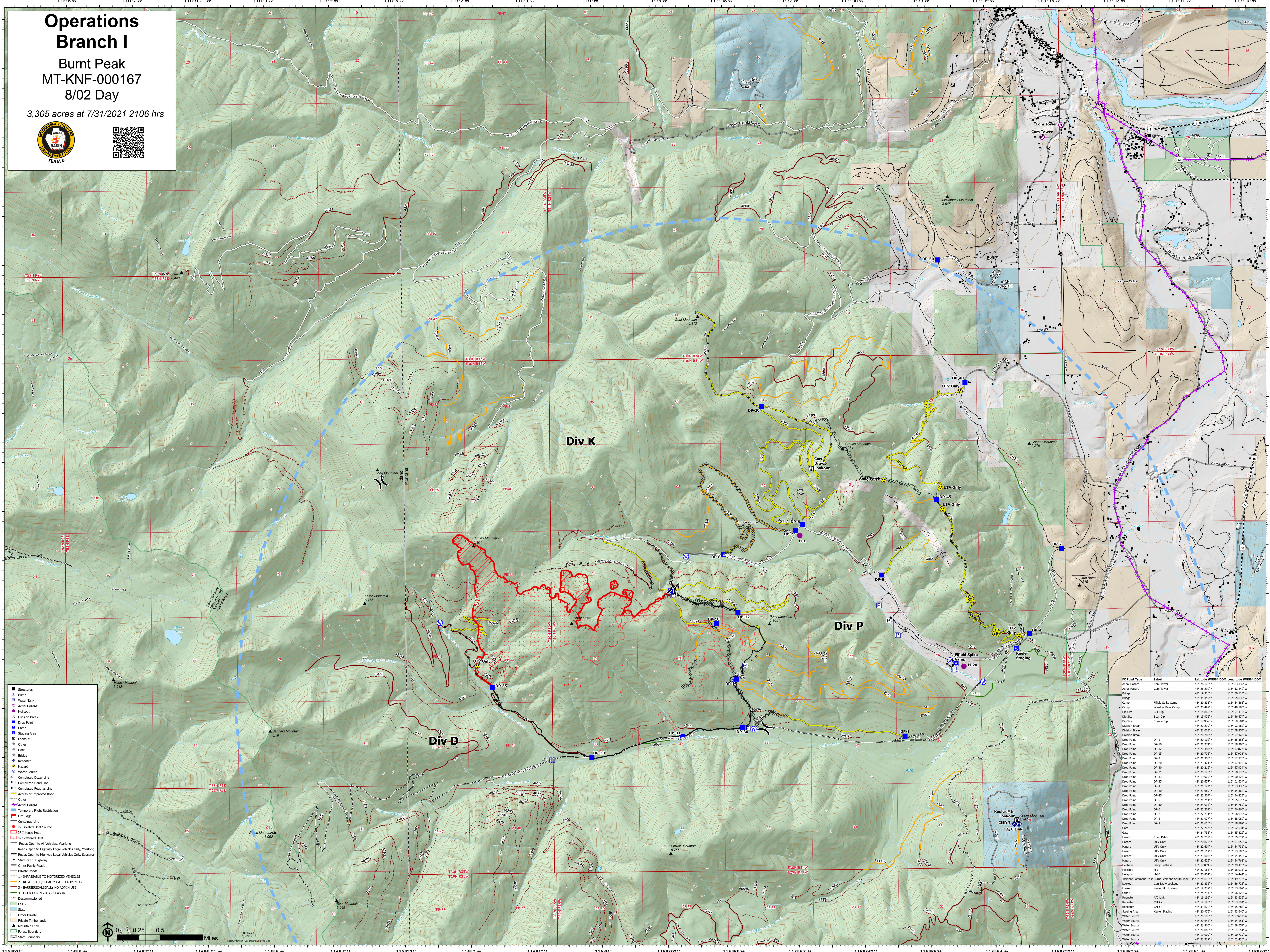


Operations Branch I

Burnt Peak
MT-KNF-000167
8/02 Day

3,305 acres at 7/31/2021 2106 hrs



- Structures
- ⊕ Pump
- ⊕ Water Tank
- ⊕ Aerial Hazard
- ⊕ Helipad
- ⊕ Division Break
- ⊕ Drop Point
- ⊕ Camp
- ⊕ Staging Area
- ⊕ Lookout
- ⊕ Gate
- ⊕ Bridge
- ⊕ Repeater
- ⊕ Hazard
- ⊕ Water Source
- ⊕ Completed Dozer Line
- ⊕ Completed Hand Line
- ⊕ Completed Road as Line
- ⊕ Access or Improved Road
- ⊕ Other
- ⊕ Aerial Hazard
- ⊕ Temporary Flight Restriction
- ⊕ Fire Edge
- ⊕ Contained Line
- ⊕ IR Isolated Heat Source
- ⊕ IR Isolated Heat
- ⊕ IR Scattered Heat
- ⊕ Roads Open to All Vehicles, Yearling
- ⊕ Roads Open to Highway Legal Vehicles Only, Yearling
- ⊕ Roads Open to Highway Legal Vehicles Only, Seasonal
- ⊕ State or US Highway
- ⊕ Other Public Roads
- ⊕ Private Roads
- ⊕ Impassable to Motorized Vehicles
- ⊕ Restriction/Legally Gated Admin Use
- ⊕ Barrier/Legally No Admin Use
- ⊕ Open During Bear Season
- ⊕ Decommissioned
- ⊕ USFS
- ⊕ State
- ⊕ Other Private
- ⊕ Private Timberlands
- ⊕ Mountain Peak
- ⊕ Forest Boundary
- ⊕ State Boundary

| FC Point Type | Label | Latitude | Longitude |
|-----------------------|-------------------------------|---------------|----------------|
| Aerial Hazard | Com Tower | 48° 28.197' N | 115° 51.132' W |
| Aerial Hazard | Com Tower | 48° 26.200' N | 115° 52.840' W |
| Bridge | | 48° 18.050' N | 115° 40.027' W |
| Bridge | | 48° 35.347' N | 115° 55.032' W |
| Camp | Field Spike Camp | 48° 20.831' N | 115° 54.561' W |
| Camp | Window Base Camp | 48° 25.499' N | 115° 49.506' W |
| Dip Site | Bull Dip | 48° 15.868' N | 115° 51.419' W |
| Dip Site | Spur Dip | 48° 15.976' N | 115° 56.574' W |
| Dip Site | Spur Dip | 48° 12.000' N | 115° 59.587' W |
| Division Break | | 48° 22.339' N | 116° 02.182' W |
| Division Break | | 48° 21.638' N | 115° 58.857' W |
| Division Break | | 48° 20.202' N | 115° 57.878' W |
| Drop Point | DP-1 | 48° 20.102' N | 115° 55.353' W |
| Drop Point | DP-2 | 48° 21.271' N | 115° 56.507' W |
| Drop Point | DP-12 | 48° 21.384' N | 115° 57.872' W |
| Drop Point | DP-15 | 48° 20.700' N | 115° 57.900' W |
| Drop Point | DP-1 | 48° 21.880' N | 115° 52.927' W |
| Drop Point | DP-20 | 48° 23.471' N | 115° 57.466' W |
| Drop Point | DP-30 | 48° 20.210' N | 115° 57.827' W |
| Drop Point | DP-31 | 48° 20.128' N | 115° 56.738' W |
| Drop Point | DP-33 | 48° 19.829' N | 116° 01.127' W |
| Drop Point | DP-20 | 48° 20.657' N | 116° 01.634' W |
| Drop Point | DP-4 | 48° 21.124' N | 115° 53.937' W |
| Drop Point | DP-40 | 48° 23.689' N | 115° 54.364' W |
| Drop Point | DP-45 | 48° 22.556' N | 115° 54.827' W |
| Drop Point | DP-5 | 48° 21.744' N | 115° 55.679' W |
| Drop Point | DP-50 | 48° 24.938' N | 115° 54.260' W |
| Drop Point | DP-6 | 48° 22.269' N | 115° 56.867' W |
| Drop Point | DP-7 | 48° 22.211' N | 115° 56.978' W |
| Drop Point | DP-8 | 48° 21.977' N | 115° 58.000' W |
| Drop Point | DP-9 | 48° 23.605' N | 115° 58.000' W |
| Gate | | 48° 22.767' N | 115° 52.531' W |
| Gate | | 48° 24.736' N | 115° 55.822' W |
| Hazard | Snag Patch | 48° 22.007' N | 115° 55.427' W |
| Hazard | UTV Only | 48° 20.874' N | 116° 01.853' W |
| Hazard | UTV Only | 48° 22.680' N | 115° 54.707' W |
| Hazard | UTV Only | 48° 21.112' N | 115° 53.992' W |
| Hazard | UTV Only | 48° 23.604' N | 115° 54.450' W |
| Hazard | UTV Only | 48° 22.835' N | 115° 54.827' W |
| Hazard | Libby Hillbase | 48° 17.059' N | 115° 26.425' W |
| Helipad | H-1 | 48° 22.150' N | 115° 56.515' W |
| Helipad | H-20 | 48° 20.190' N | 115° 54.415' W |
| Incident Command Post | Burnt Peak and South Yank JCP | 48° 25.619' N | 115° 49.216' W |
| Lookout | Carr Draw Lookout | 48° 22.830' N | 115° 56.728' W |
| Lookout | Keeler Mtn Lookout | 48° 19.237' N | 115° 53.847' W |
| Other | | 48° 24.793' N | 115° 56.123' W |
| Repeater | CHD 7 | 48° 19.190' N | 115° 53.630' W |
| Repeater | CHD 8 | 48° 20.975' N | 115° 53.847' W |
| Repeater | CHD 9 | 48° 33.632' N | 115° 55.287' W |
| Staging Area | Keeler Staging | 48° 20.195' N | 115° 54.651' W |
| Water Source | | 48° 20.647' N | 115° 54.151' W |
| Water Source | | 48° 21.900' N | 115° 58.004' W |
| Water Source | | 48° 20.866' N | 115° 54.651' W |
| Water Source | | 48° 19.909' N | 116° 00.729' W |
| Water Source | | 48° 21.317' N | 116° 02.407' W |

