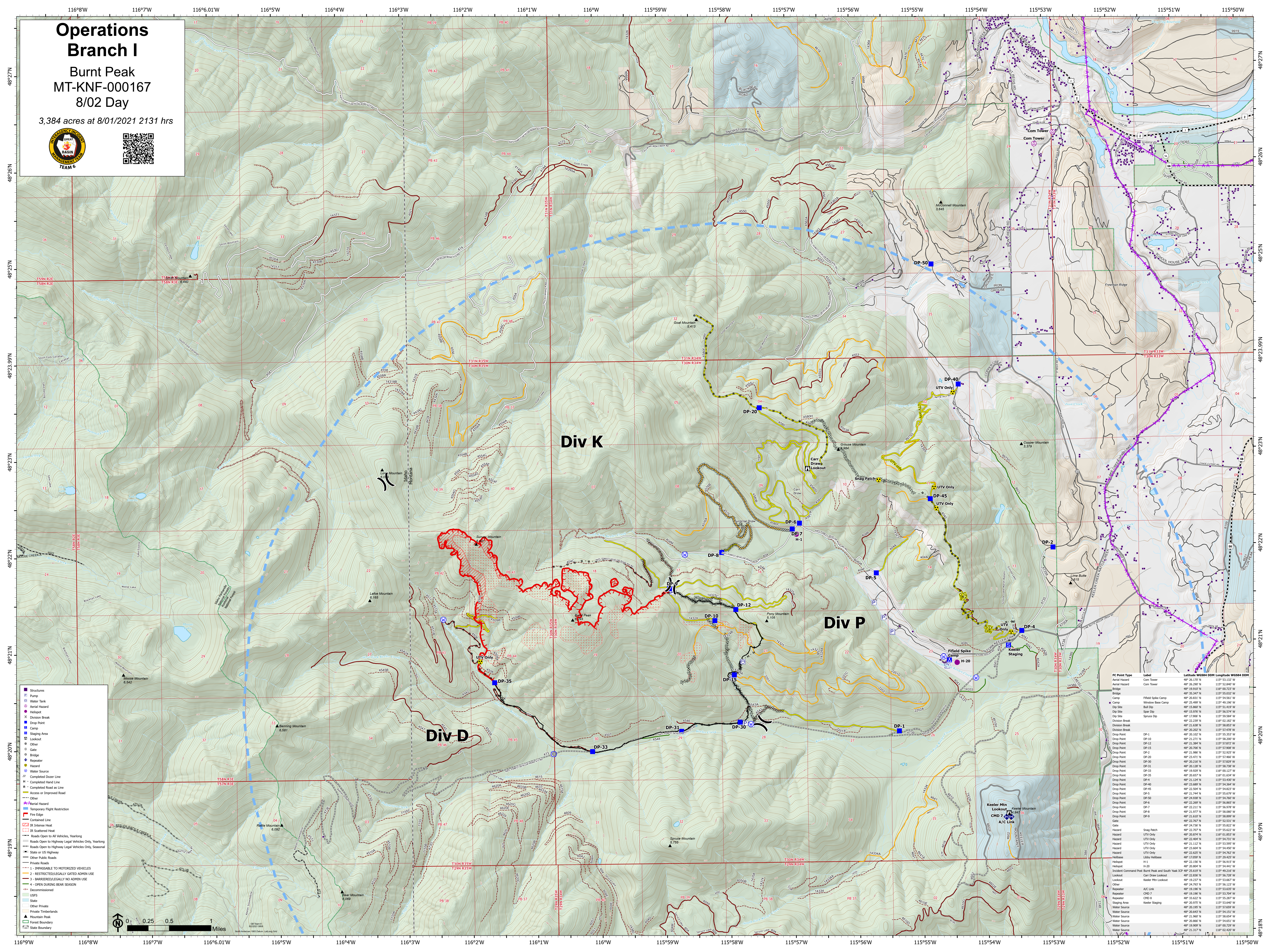


Operations Branch I

Burnt Peak
MT-KNF-000167
8/02 Day

3,384 acres at 8/01/2021 2131 hrs



Div K

Div P

Div D

- Structures
- Pump
- Water Tank
- Aerial Hazard
- Helipad
- Division Break
- Drop Point
- Camp
- Staging Area
- Lookout
- Gate
- Bridge
- Repeater
- Hazard
- Water Source
- Completed Dozer Line
- Completed Road Line
- Completed Road as Line
- Access or Improved Road
- Other
- Aerial Hazard
- Temporary Flight Restriction
- Fire Edge
- Contained Line
- IR Intense Heat
- Roads Open to All Vehicles, Yearling
- Roads Open to Highway Legal Vehicles Only, Yearling
- Roads Open to Highway Legal Vehicles Only, Seasonal
- State or US Highway
- Other Public Roads
- Private Roads
- IMPASSABLE TO MOTORIZED VEHICLES
- RESTRICTED/LEGALLY GATED ADMIN USE
- BARRIER/LEGALLY NO ADMIN USE
- OPEN DURING BEAR SEASON
- Decommissioned
- USPS
- State
- Other Private
- Private Timberlands
- Mountain Peak
- Forest Boundary
- State Boundary

FC Point Type	Label	Latitude	Longitude	DOM	Length	Width
Aerial Hazard	Com Tower	48° 28.1197' N	115° 53.132' W			
Aerial Hazard	Com Tower	48° 28.2007' N	115° 52.840' W			
Bridge	Bridge	48° 18.0507' N	115° 03.217' W			
Bridge	Bridge	48° 35.347' N	115° 55.032' W			
Camp	Fielded Spike Camp	48° 20.831' N	115° 54.561' W			
Camp	Window Base Camp	48° 25.499' N	115° 49.501' W			
Dip Site	Bull Dip	48° 15.860' N	115° 51.419' W			
Dip Site	Spore Dip	48° 15.970' N	115° 56.574' W			
Division Break	Spore Dip	48° 17.000' N	115° 59.504' W			
Division Break	Spore Dip	48° 22.239' N	116° 02.182' W			
Division Break	Spore Dip	48° 21.380' N	115° 58.827' W			
Drop Point	DP-1	48° 20.102' N	115° 55.353' W			
Drop Point	DP-2	48° 21.880' N	115° 53.907' W			
Drop Point	DP-3	48° 21.384' N	115° 57.827' W			
Drop Point	DP-4	48° 20.700' N	115° 57.900' W			
Drop Point	DP-5	48° 23.471' N	115° 57.466' W			
Drop Point	DP-6	48° 20.210' N	115° 57.827' W			
Drop Point	DP-7	48° 20.130' N	115° 56.730' W			
Drop Point	DP-8	48° 20.657' N	115° 01.674' W			
Drop Point	DP-9	48° 21.124' N	115° 53.507' W			
Drop Point	DP-10	48° 19.929' N	116° 01.127' W			
Drop Point	DP-11	48° 20.102' N	115° 55.353' W			
Drop Point	DP-12	48° 20.700' N	115° 57.900' W			
Drop Point	DP-13	48° 23.689' N	115° 54.364' W			
Drop Point	DP-14	48° 22.598' N	115° 54.827' W			
Drop Point	DP-15	48° 21.744' N	115° 55.679' W			
Drop Point	DP-16	48° 24.938' N	115° 54.267' W			
Drop Point	DP-17	48° 22.389' N	115° 56.867' W			
Drop Point	DP-18	48° 22.211' N	115° 56.970' W			
Drop Point	DP-19	48° 21.977' N	115° 58.007' W			
Drop Point	DP-20	48° 22.607' N	115° 56.867' W			
Drop Point	DP-21	48° 22.767' N	115° 52.531' W			
Gate	Gate	48° 24.730' N	115° 55.827' W			
Hazard	Snag Patch	48° 20.102' N	115° 55.032' W			
Hazard	UTV Only	48° 20.874' N	116° 01.853' W			
Hazard	UTV Only	48° 22.690' N	115° 54.561' W			
Hazard	UTV Only	48° 21.112' N	115° 53.907' W			
Hazard	UTV Only	48° 23.604' N	115° 54.561' W			
Hazard	UTV Only	48° 22.598' N	115° 54.827' W			
Hillbase	Libby Hillbase	48° 17.059' N	115° 29.425' W			
Helipad	H-1	48° 22.150' N	115° 56.513' W			
Helipad	H-2	48° 20.840' N	115° 44.841' W			
Incident Command Post	Burnt Peak and South Yank 30P	48° 25.619' N	115° 49.216' W			
Lookout	Carr Draw Lookout	48° 22.830' N	115° 56.730' W			
Lookout	Keeler Mtn Lookout	48° 23.237' N	115° 53.847' W			
Other	Other	48° 24.783' N	115° 56.123' W			
Repeater	A/C Link	48° 19.190' N	115° 53.630' W			
Repeater	CHD 7	48° 19.190' N	115° 53.630' W			
Repeater	CHD 8	48° 33.632' N	115° 55.287' W			
Staging Area	Keeler Staging	48° 20.970' N	115° 53.847' W			
Water Source	Water Source	48° 20.647' N	115° 54.151' W			
Water Source	Water Source	48° 21.907' N	115° 53.847' W			
Water Source	Water Source	48° 20.866' N	115° 54.651' W			
Water Source	Water Source	48° 19.909' N	116° 00.729' W			
Water Source	Water Source	48° 21.317' N	116° 01.407' W			

