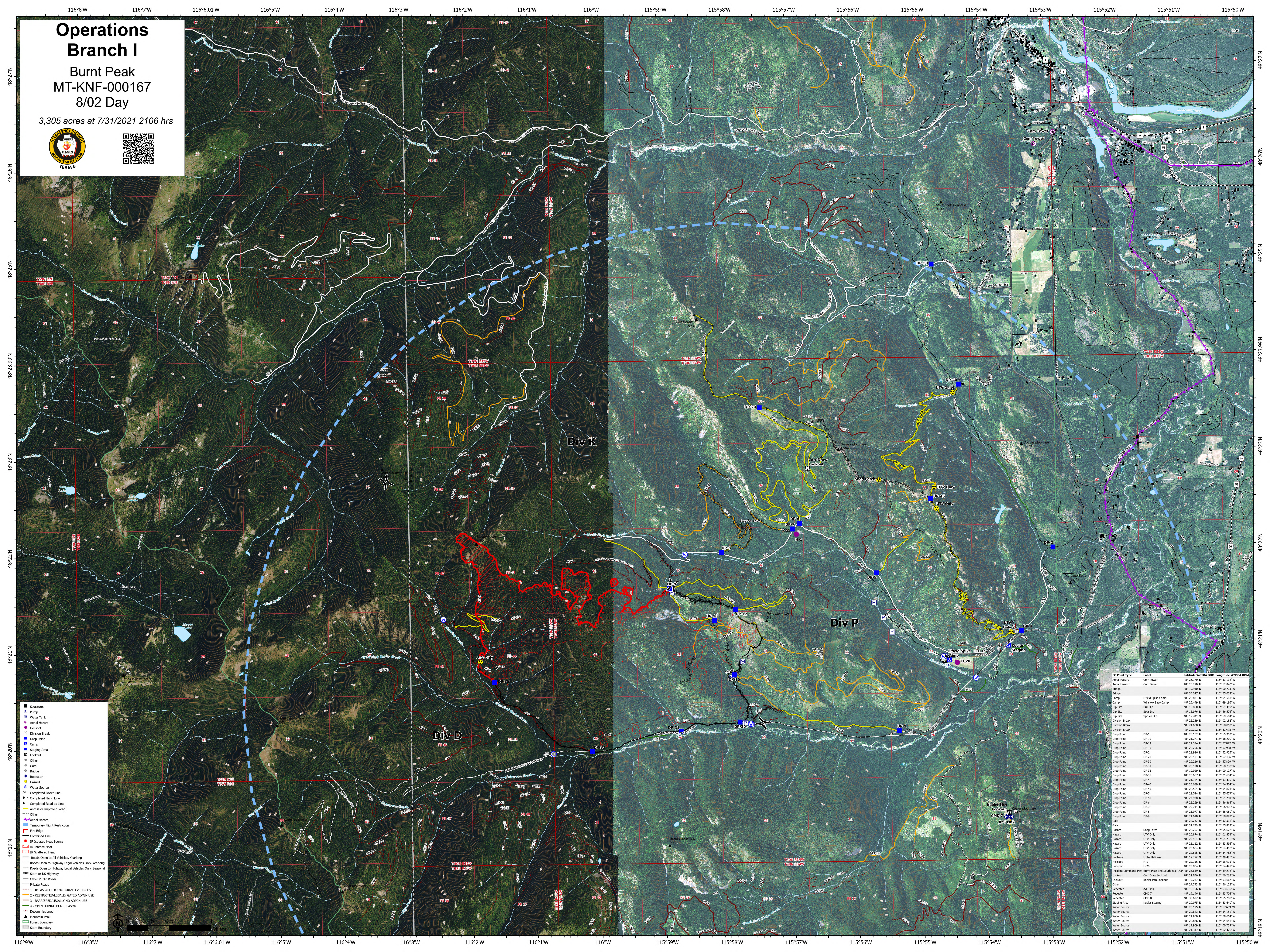


Operations Branch I

Burnt Peak
MT-KNF-000167
8/02 Day

3,305 acres at 7/31/2021 2106 hrs



- Structures
- Pump
- Water Tank
- Aerial Hazard
- Hotspot
- Division Break
- Drop Point
- Camp
- Staging Area
- Lookout
- Over
- Gate
- Bridge
- Repeater
- Hazard
- Water Source
- Completed Dozer Line
- Completed Hand Line
- Completed Road as Line
- Access or Improved Road
- Other
- Aerial Hazard
- Temporary Flight Restriction
- Fire Edge
- Contained Line
- IR Isolated Heat Source
- IR Intense Heat
- IR Scattered Heat
- Roads Open to All Vehicles, Yearlong
- Roads Open to Highway Legal Vehicles Only, Yearlong
- Roads Open to Highway Legal Vehicles Only, Seasonal
- State or US Highway
- Other Public Roads
- Private Roads
- IMPASSABLE TO MOTORIZED VEHICLES
- RESTRICTED/LEGALLY GATED ADMIN USE
- BARBERED/LEGALLY NO ADMIN USE
- OPEN DURING BEAR SEASON
- Decommissioned
- Mountain Peak
- Forest Boundary
- State Boundary

FC Point Type	Label	Latitude WGS84	Longitude WGS84
Aerial Hazard	Com Tower	48° 26.197' N	115° 51.112' W
Aerial Hazard	Com Tower	48° 26.200' N	115° 52.840' W
Bridge		48° 19.810' N	116° 00.217' W
Bridge		48° 35.347' N	115° 55.032' W
Camp	Fielded Spike Camp	48° 20.831' N	115° 54.561' W
Camp	Window Base Camp	48° 22.699' N	115° 49.596' W
Drop Point	Bull Dip	48° 15.860' N	115° 51.419' W
Drop Point	Chip Site	48° 15.976' N	115° 56.574' W
Drop Point	Spore Dip	48° 17.980' N	115° 59.584' W
Division Break		48° 22.339' N	116° 01.182' W
Division Break		48° 20.202' N	115° 57.478' W
Drop Point	DP-1	48° 20.102' N	115° 55.353' W
Drop Point	DP-2	48° 21.271' N	115° 58.202' W
Drop Point	DP-12	48° 21.304' N	115° 57.872' W
Drop Point	DP-15	48° 20.700' N	115° 57.908' W
Drop Point	DP-1	48° 21.060' N	115° 52.902' W
Drop Point	DP-20	48° 23.471' N	115° 57.446' W
Drop Point	DP-30	48° 20.210' N	115° 57.842' W
Drop Point	DP-1	48° 21.130' N	115° 56.738' W
Drop Point	DP-33	48° 19.829' N	116° 01.127' W
Drop Point	DP-20	48° 20.107' N	115° 57.842' W
Drop Point	DP-1	48° 21.124' N	115° 53.330' W
Drop Point	DP-40	48° 23.689' N	115° 54.364' W
Drop Point	DP-5	48° 22.506' N	115° 54.212' W
Drop Point	DP-5	48° 21.744' N	115° 55.679' W
Drop Point	DP-50	48° 24.938' N	115° 54.760' W
Drop Point	DP-1	48° 22.369' N	115° 56.867' W
Drop Point	DP-7	48° 22.211' N	115° 56.978' W
Drop Point	DP-8	48° 21.977' N	115° 58.000' W
Gate	DP-8	48° 22.767' N	115° 52.531' W
Gate		48° 24.736' N	115° 55.822' W
Hazard		48° 22.037' N	115° 55.822' W
Hazard	UTV Only	48° 20.874' N	116° 01.853' W
Hazard	UTV Only	48° 22.698' N	115° 57.101' W
Hazard	UTV Only	48° 21.112' N	115° 55.902' W
Hazard	UTV Only	48° 23.604' N	115° 54.450' W
Hazard	UTV Only	48° 22.625' N	115° 54.212' W
Hazard	UTV Only	48° 22.625' N	115° 54.212' W
Helibase	Libby Helibase	48° 17.059' N	115° 29.425' W
Hotspot	H-1	48° 22.150' N	115° 56.515' W
Hotspot	H-20	48° 22.150' N	115° 56.515' W
Incident Command Post	Burnt Peak and South Yaak ICP	48° 25.619' N	115° 49.216' W
Lookout	Carr Draw Lookout	48° 22.830' N	115° 56.728' W
Lookout	Keeler Mtn Lookout	48° 21.271' N	115° 58.202' W
Other		48° 24.793' N	115° 56.123' W
Repeater	CHC Link	48° 19.190' N	115° 53.830' W
Repeater	CHD 7	48° 19.190' N	115° 53.830' W
Repeater	CHD 8	48° 33.622' N	115° 55.287' W
Staging Area	Keeler Staging	48° 20.100' N	115° 53.940' W
Water Source		48° 20.100' N	115° 57.659' W
Water Source		48° 20.647' N	115° 54.151' W
Water Source		48° 21.907' N	115° 58.014' W
Water Source		48° 20.866' N	115° 54.651' W
Water Source		48° 19.909' N	116° 00.720' W
Water Source		48° 21.317' N	116° 02.400' W