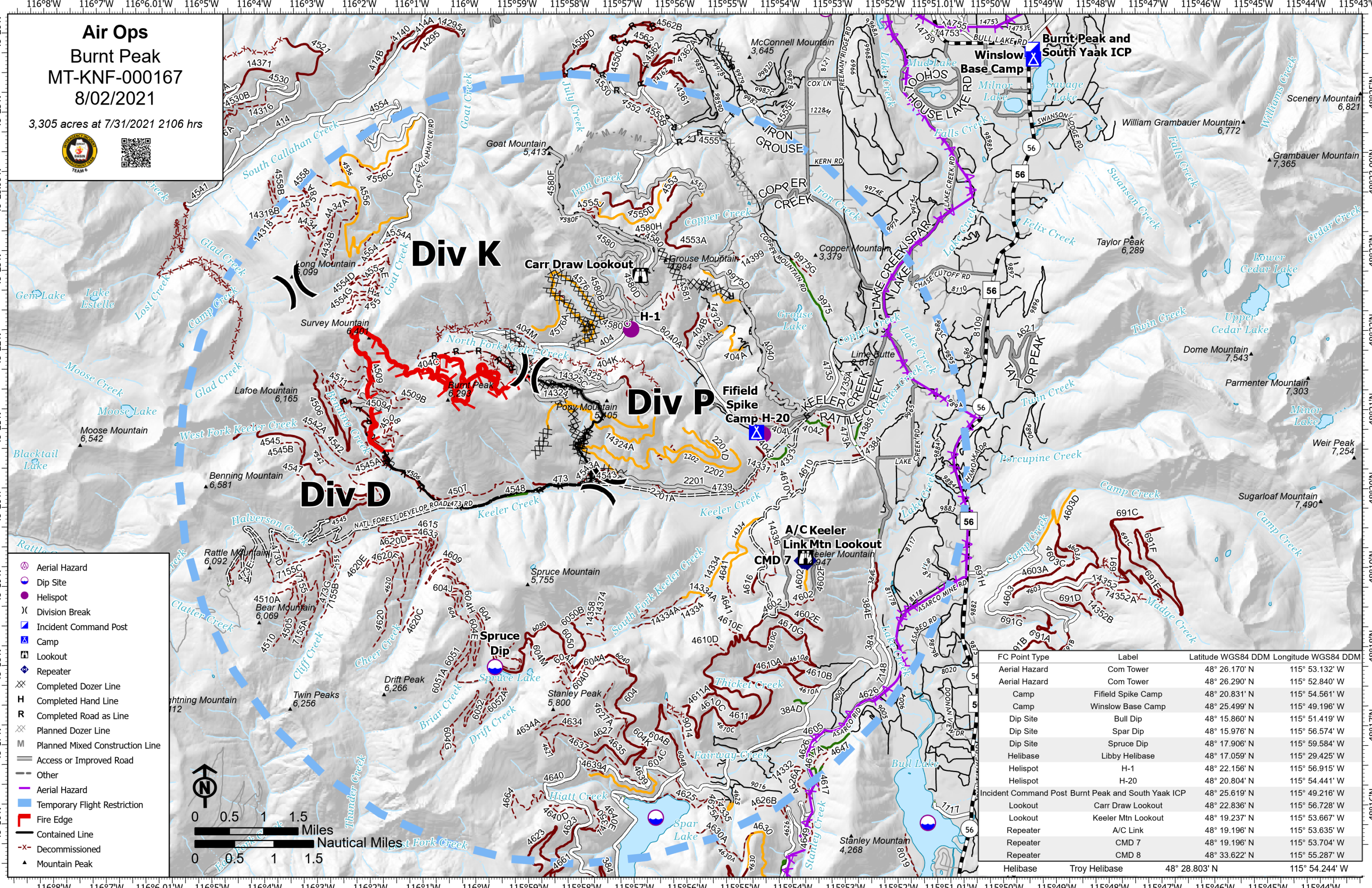


Air Ops
Burnt Peak
MT-KNF-000167
8/02/2021
 3,305 acres at 7/31/2021 2106 hrs





FC Point Type	Label	Latitude WGS84 DDM	Longitude WGS84 DDM
Aerial Hazard	Com Tower	48° 26.170' N	115° 53.132' W
Aerial Hazard	Com Tower	48° 26.290' N	115° 52.840' W
Camp	Fifield Spike Camp	48° 20.831' N	115° 54.561' W
Camp	Winslow Base Camp	48° 25.499' N	115° 49.196' W
Dip Site	Bull Dip	48° 15.860' N	115° 51.419' W
Dip Site	Spar Dip	48° 15.976' N	115° 56.574' W
Dip Site	Spruce Dip	48° 17.906' N	115° 59.584' W
Helibase	Libby Helibase	48° 17.059' N	115° 29.425' W
Helispot	H-1	48° 22.156' N	115° 56.915' W
Helispot	H-20	48° 20.804' N	115° 54.441' W
Incident Command Post	Burnt Peak and South Yaak ICP	48° 25.619' N	115° 49.216' W
Lookout	Carr Draw Lookout	48° 22.836' N	115° 56.728' W
Lookout	Keeler Mtn Lookout	48° 19.237' N	115° 53.667' W
Repeater	A/C Link	48° 19.196' N	115° 53.635' W
Repeater	CMD 7	48° 19.196' N	115° 53.704' W
Repeater	CMD 8	48° 33.622' N	115° 55.287' W
Helibase	Troy Helibase	48° 28.803' N	115° 54.244' W