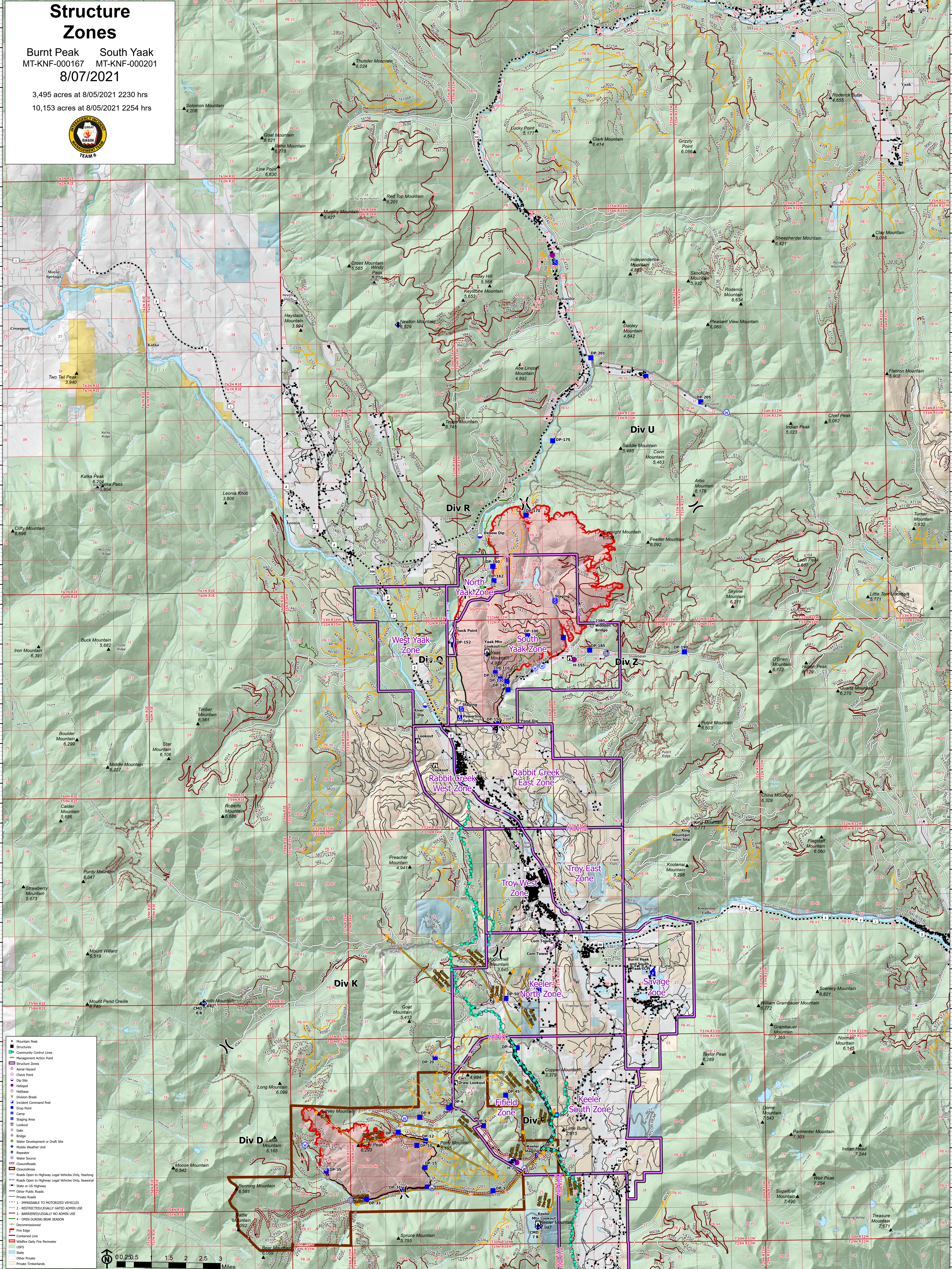


Structure Zones

Burnt Peak South Yaak
MT-KNF-000167 MT-KNF-000201
8/07/2021

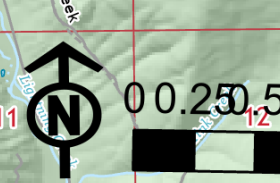
3,495 acres at 8/05/2021 2230 hrs
10,153 acres at 8/05/2021 2254 hrs



- ▲ Mountain Peak
- Structures
- Community Control Lines
- Management Action Point
- Structure Zones
- Aerial Hazard
- Check Point
- Dip Site
- Helipad
- Helibase
- Division Break
- Incident Command Post
- Drop Point
- Camp
- Staging Area
- Lookout
- Gate
- Bridge
- Water Development or Draft Site
- Mobile Weather Unit
- Repeater
- Water Source
- Closure/Roads
- Closure/Areas
- Roads Open to Highway Legal Vehicles Only, Yearlong
- Roads Open to Highway Legal Vehicles Only, Seasonal
- State or US Highway
- Other Public Roads
- Private Roads
- State
- Other Private
- Private Timberlands

1 - IMPROPERLY TO MOTORIZED VEHICLES
2 - RESTRICTED/LEGALLY GATED ADMIN USE
3 - BARRIRED/LEGALLY NO ADMIN USE
4 - OPEN DURING BEAR SEASON

— Decommissioned
— Contained Line
— Wildlife Daily Fire Perimeter
— USFS
— Other Private
— Private Timberlands



116°13'W 116°12'W 116°11'W 116°10'W 116°9'W 116°8'W 116°7'W 116°6.01'W 116°5'W 116°4'W 116°3'W 116°2'W 116°1'W 116°W 115°59'W 115°58'W 115°57'W 115°56'W 115°55'W 115°54'W 115°53'W 115°52'W 115°50'W 115°49'W 115°48'W 115°47'W 115°46'W 115°45'W 115°44'W 115°43'W 115°42'W 115°41'W 115°40'W 115°39'W