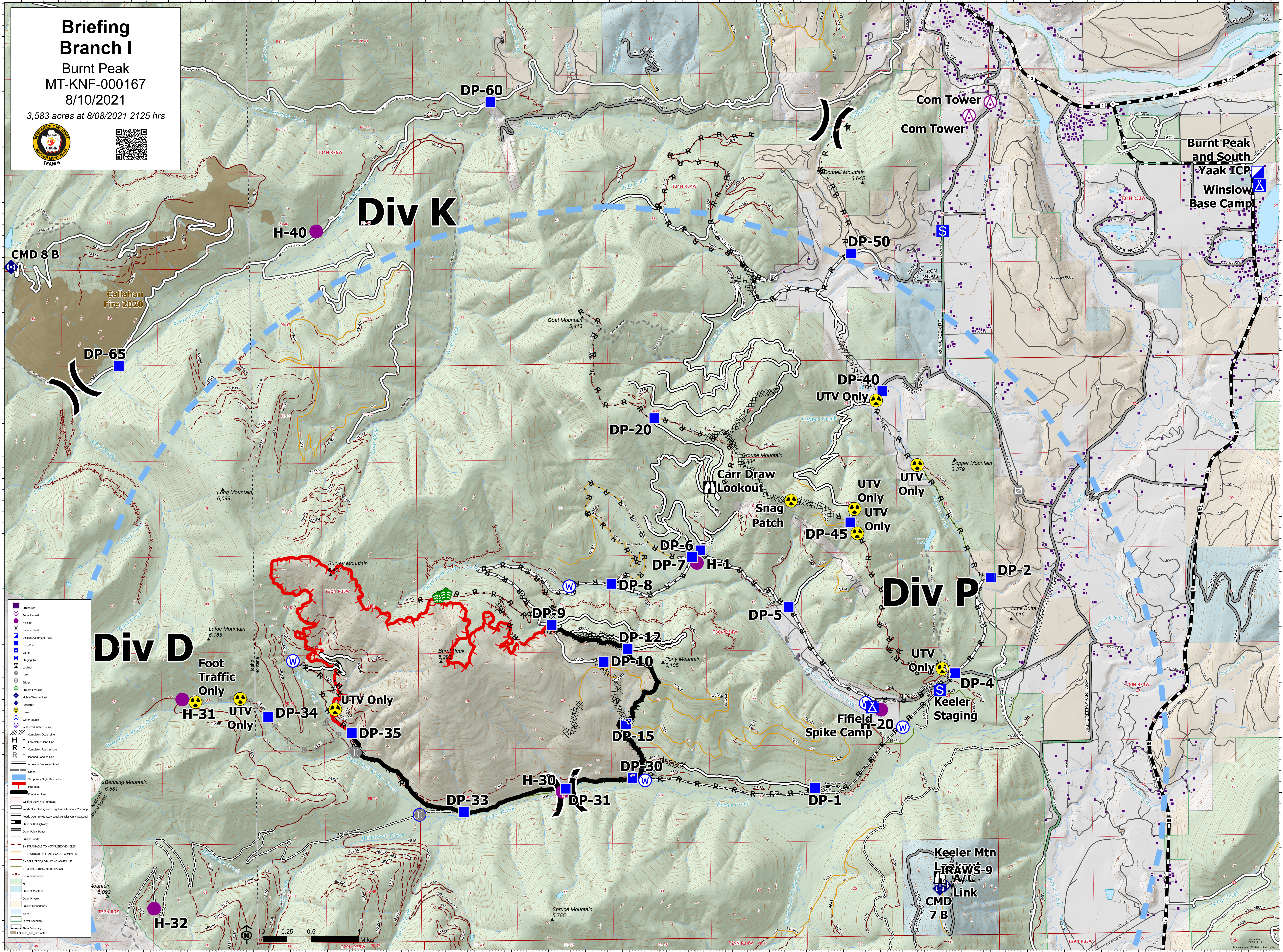


Briefing Branch I
 Burnt Peak
 MT-KNF-000167
 8/10/2021
 3,583 acres at 8/08/2021 2125 hrs



Div D

Div K

Div P

Burnt Peak and South
 Yaak ICP
 Winslow Base Camp

CMD 8 B

DP-65

H-40

DP-60

DP-50

Com Tower

Com Tower

DP-20

DP-40

UTV Only

Carr Draw
 Lookout

Snag Patch

UTV Only

UTV Only

DP-45

UTV Only

DP-6

DP-7

H-1

DP-8

DP-9

DP-12

DP-10

DP-5

DP-2

DP-4

UTV Only

Keeler Staging

Fifield
 Spike Camp

H-20

DP-15

DP-30

H-30

DP-31

DP-33

DP-1

Keeler Mtn
 LTRAW-9

CMD 7 B

Foot Traffic Only

H-31

UTV Only

DP-34

DP-35

UTV Only

H-32