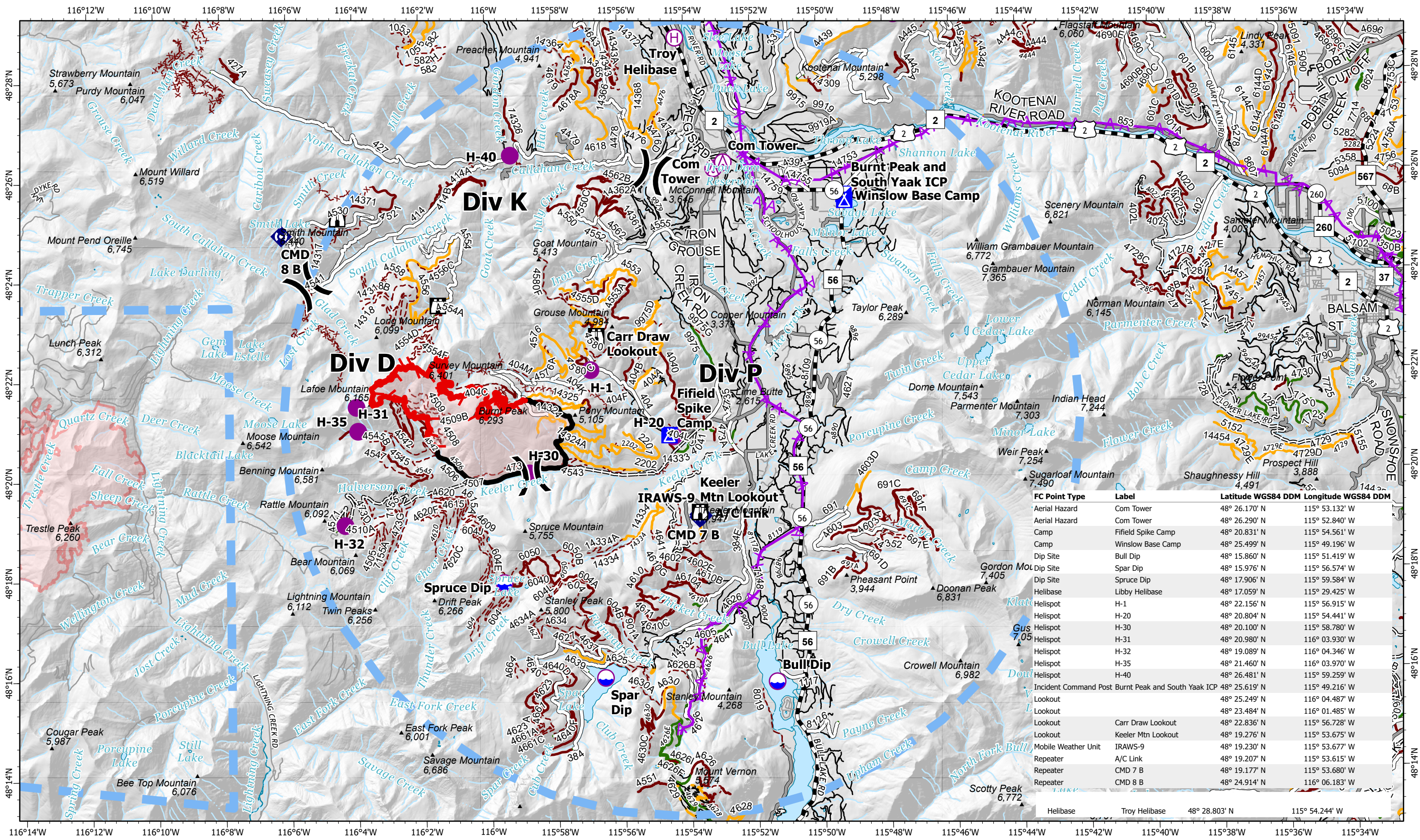


PILOT MAP

BURNT PEAK

MT-KNF-000167

8/20/2021



FC Point Type	Label	Latitude WGS84 DDM	Longitude WGS84 DDM
Aerial Hazard	Com Tower	48° 26.170' N	115° 53.132' W
Aerial Hazard	Com Tower	48° 26.290' N	115° 52.840' W
Camp	Fifield Spike Camp	48° 20.831' N	115° 54.561' W
Camp	Winslow Base Camp	48° 25.499' N	115° 49.196' W
Dip Site	Bull Dip	48° 15.860' N	115° 51.419' W
Dip Site	Spar Dip	48° 15.976' N	115° 56.574' W
Dip Site	Spruce Dip	48° 17.906' N	115° 59.584' W
Helibase	Libby Helibase	48° 17.059' N	115° 29.425' W
Helispot	H-1	48° 22.156' N	115° 56.915' W
Helispot	H-20	48° 20.804' N	115° 54.441' W
Helispot	H-30	48° 20.100' N	115° 58.780' W
Helispot	H-31	48° 20.980' N	116° 03.930' W
Helispot	H-32	48° 19.089' N	116° 04.346' W
Helispot	H-35	48° 21.460' N	116° 03.970' W
Helispot	H-40	48° 26.481' N	115° 59.259' W
Incident Command Post	Burnt Peak and South Yaak ICP	48° 25.619' N	115° 49.216' W
Lookout		48° 25.249' N	116° 04.487' W
Lookout		48° 23.484' N	116° 01.485' W
Lookout	Carr Draw Lookout	48° 22.836' N	115° 56.728' W
Lookout	Keeler Mtn Lookout	48° 19.276' N	115° 53.675' W
Mobile Weather Unit	IRAWS-9	48° 19.230' N	115° 53.677' W
Repeater	A/C Link	48° 19.207' N	115° 53.615' W
Repeater	CMD 7 B	48° 19.177' N	115° 53.680' W
Repeater	CMD 8 B	48° 24.914' N	116° 06.183' W

Helibase Troy Helibase 48° 28.803' N 115° 54.244' W

4066 est. acres
Acres from IR 8/15/2021 2113 hrs
2 Miles

▲ Mountain Peak	Ⓜ Helibase	Ⓜ Camp	Ⓜ Repeater	Ⓜ Fire Edge	Ⓜ Roads Open to Highway Legal Vehicles Only, Yearlong	Ⓜ State or US Highway	Ⓜ 1 - IMPASSABLE TO MOTORIZED VEHICLES	Ⓜ 4 - OPEN DURING BEAR SEASON
Ⓜ Aerial Hazard	Ⓜ Division Break	Ⓜ Lookout	Ⓜ Aerial Hazard	Ⓜ Contained Line	Ⓜ Roads Open to Highway Legal Vehicles Only, Seasonal	Ⓜ Other Public Roads	Ⓜ 2 - RESTRICTED/LEGALLY GATED ADMIN USE	Ⓜ Wildfire Daily Fire Perimeter
Ⓜ Dip Site	Ⓜ Incident Command Post	Ⓜ Mobile Weather Unit	Ⓜ Temporary Flight Restriction	Ⓜ Decommissioned		Ⓜ Private Roads	Ⓜ 3 - BARRIERED/LEGALLY NO ADMIN USE	