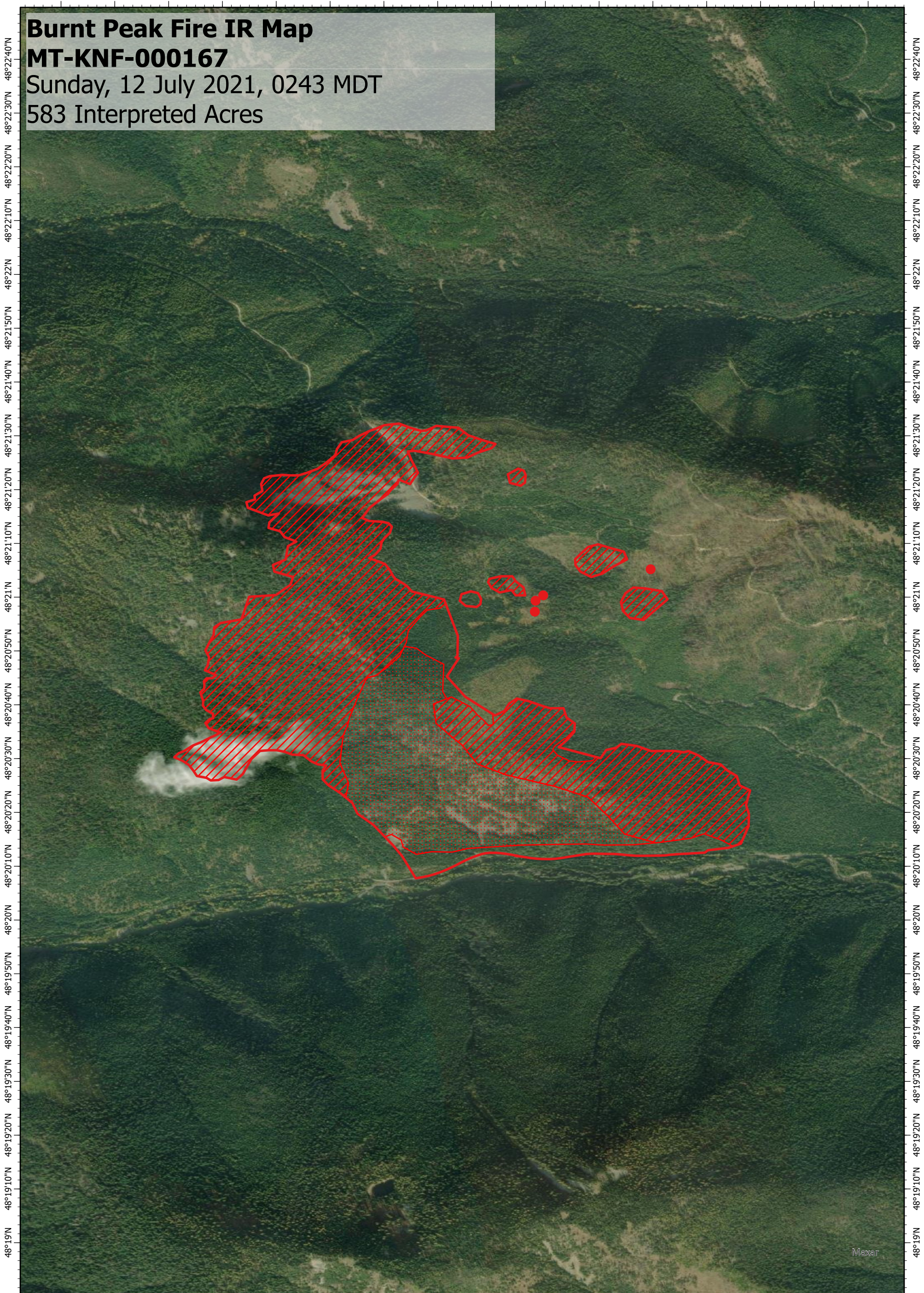


115°59'50"W 115°59'40"W 115°59'30"W 115°59'20"W 115°59'10"W 115°59'W 115°58'50"W 115°58'40"W 115°58'30"W 115°58'20"W 115°58'10"W 115°58'W 115°57'50"W 115°57'40"W 115°57'30"W 115°57'20"W

Burnt Peak Fire IR Map
MT-KNF-000167
Sunday, 12 July 2021, 0243 MDT
583 Interpreted Acres



115°59'50"W 115°59'40"W 115°59'30"W 115°59'20"W 115°59'10"W 115°59'W 115°58'50"W 115°58'40"W 115°58'30"W 115°58'20"W 115°58'10"W 115°58'W 115°57'50"W 115°57'40"W 115°57'30"W 115°57'20"W

Legend

- Isolated Heat
- Burn Perimeter
- Scattered Heat
- Intense Heat

Scale: 1:20,000
 Projection: WGS 1984
 Produced by: Owyhee Air Research, LLC
 IR Interpreter: D. Merriman
 Contact: fire@owyheear.com (208) 442-5405

