

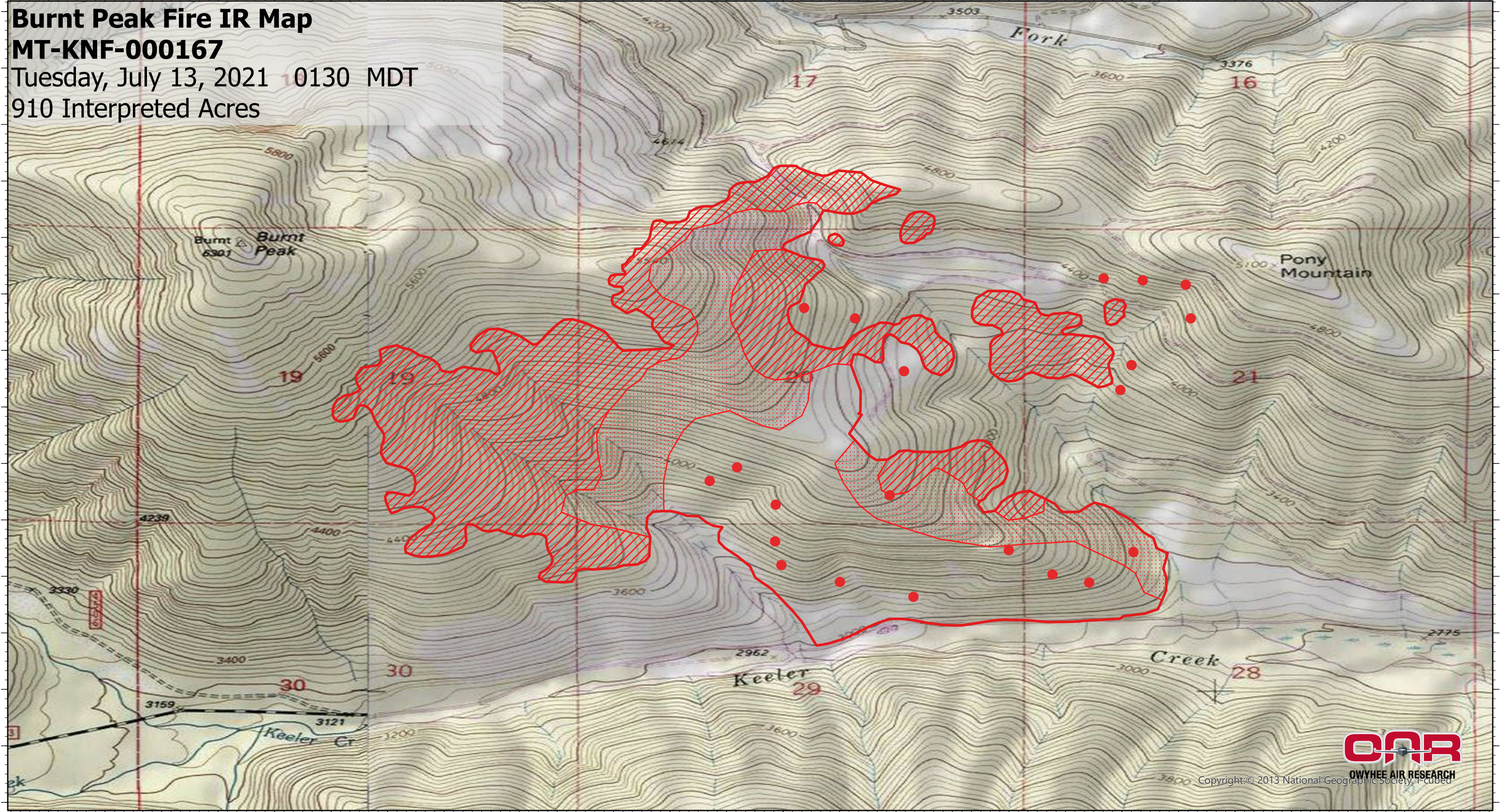
116°1'W 116°0'50"W 116°0'40"W 116°0'30"W 116°0'20"W 116°0'10"W 116°W 115°59'50"W 115°59'40"W 115°59'30"W 115°59'20"W 115°59'10"W 115°59'W 115°58'50"W 115°58'40"W 115°58'30"W 115°58'20"W 115°58'10"W 115°58'W 115°57'50"W 115°57'40"W 115°57'30"W 115°57'20"W 115°57'10"W 115°57'W 115°56'50"W

Burnt Peak Fire IR Map

MT-KNF-000167

Tuesday, July 13, 2021 10130 MDT

910 Interpreted Acres



- Legend**
- IR Isolated Heat
 - Burn Perimeter
 - IR Intense Heat
 - IR Scattered Heat

Scale: 1:20,000
 Projection: WGS 1984
 Produced by: Owyhee Air Research, LLC
 IR Interpreter: C. Merriman
 Contact: fire@owyheear.com (208) 442-5405



Copyright © 2013 National Geographic Society, F-Cubed

48°22'N
48°21'50"N
48°21'40"N
48°21'30"N
48°21'20"N
48°21'10"N
48°21'N
48°20'50"N
48°20'40"N
48°20'30"N
48°20'20"N
48°20'10"N
48°20'N
48°19'50"N
48°19'40"N

48°22'N
48°21'50"N
48°21'40"N
48°21'30"N
48°21'20"N
48°21'10"N
48°21'N
48°20'50"N
48°20'40"N
48°20'30"N
48°20'20"N
48°20'10"N
48°20'N
48°19'50"N
48°19'40"N