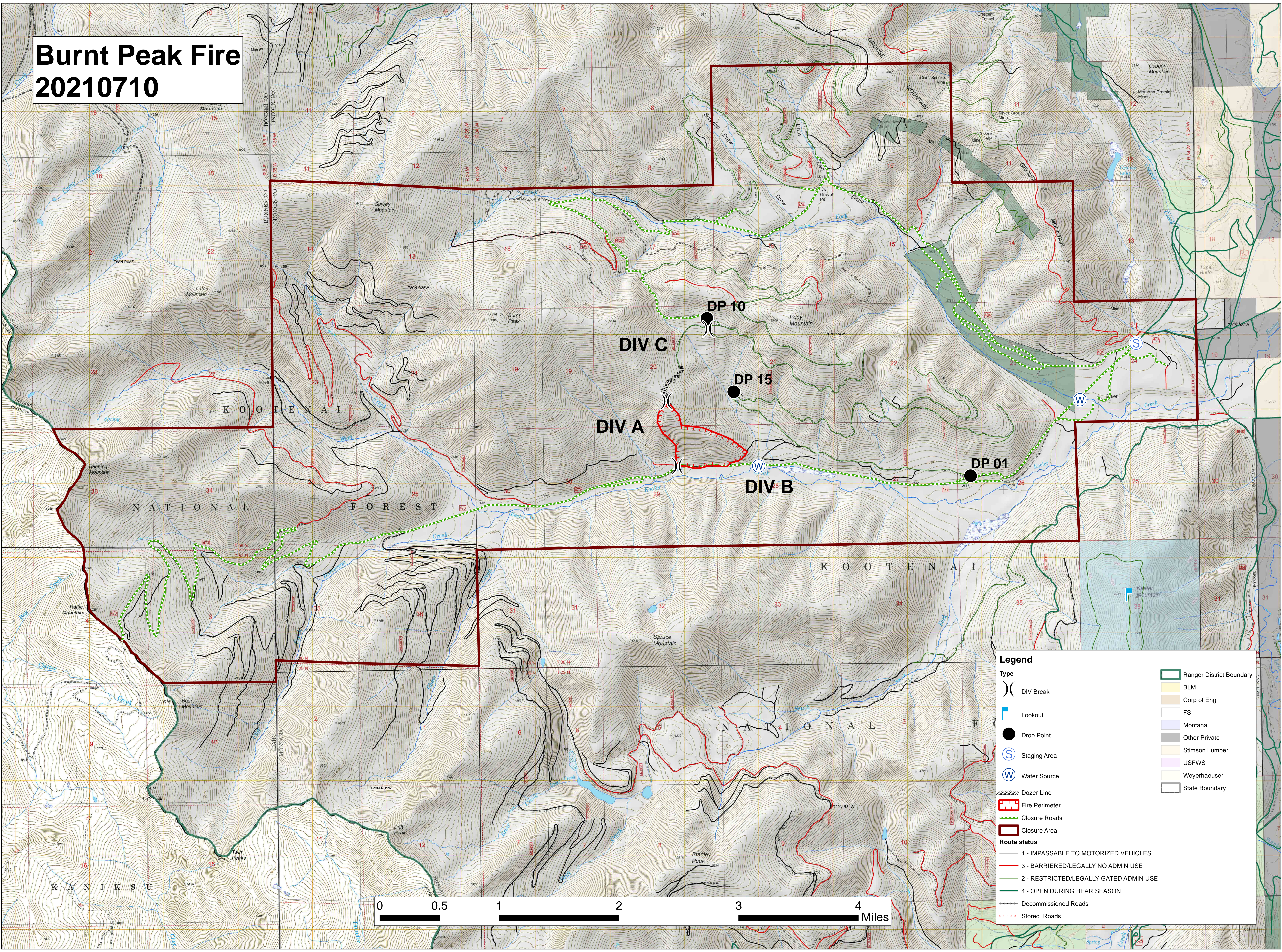


# Burnt Peak Fire 20210710



**Legend**

Ranger District Boundary	BLM
DIV Break	Corp of Eng
Lookout	FS
Drop Point	Montana
Staging Area	Other Private
Water Source	Stimson Lumber
Dozer Line	USFWS
Fire Perimeter	Weyerhaeuser
Closure Roads	State Boundary
Closure Area	

**Route status**

- 1 - IMPASSABLE TO MOTORIZED VEHICLES
- 3 - BARRIERED/LEGALLY NO ADMIN USE
- 2 - RESTRICTED/LEGALLY GATED ADMIN USE
- 4 - OPEN DURING BEAR SEASON
- Decommissioned Roads
- Stored Roads