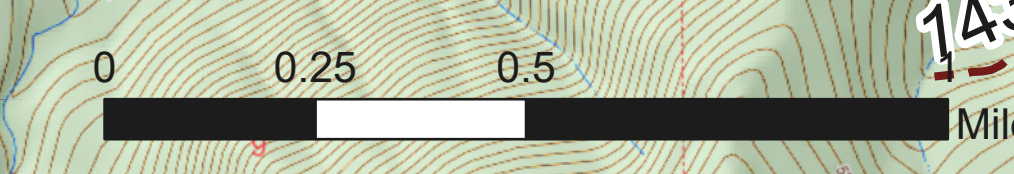


# Briefing Map

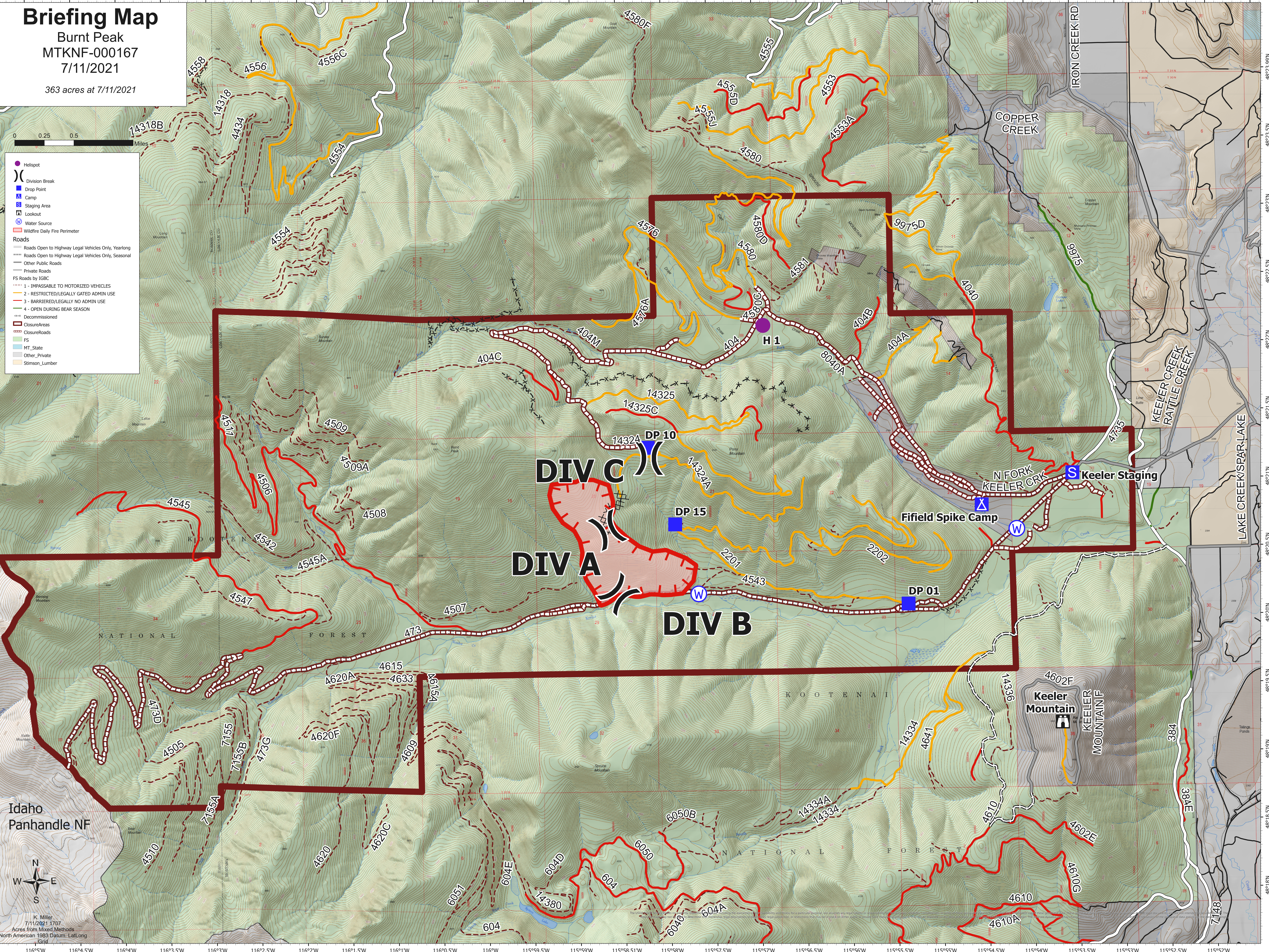
Burnt Peak  
MTKNF-000167

7/11/2021

363 acres at 7/11/2021



- Helispot
- ⌋ Division Break
- Drop Point
- ⓧ Camp
- ⓧ Staging Area
- ⓧ Lookout
- ⓧ Water Source
- ⓧ Wildfire Daily Fire Perimeter
- Roads
  - Roads Open to Highway Legal Vehicles Only, Yearlong
  - - - Roads Open to Highway Legal Vehicles Only, Seasonal
  - Other Public Roads
  - Private Roads
- FS Roads by IGBC
  - - - 1 - IMPASSABLE TO MOTORIZED VEHICLES
  - - - 2 - RESTRICTED/LEGALLY GATED ADMIN USE
  - - - 3 - BARRIERED/LEGALLY NO ADMIN USE
  - - - 4 - OPEN DURING BEAR SEASON
  - - - Decommissioned
- ClosureAreas
  - ⓧ ClosureRoads
  - FS
  - MT\_State
  - Other\_Private
  - Stimson\_Lumber



Idaho  
Panhandle NF



K. Miller  
7/11/2021 1707  
Acres from Mixed Methods  
North American 1983 Datum: Lat/Long  
Grid