

Briefing Map

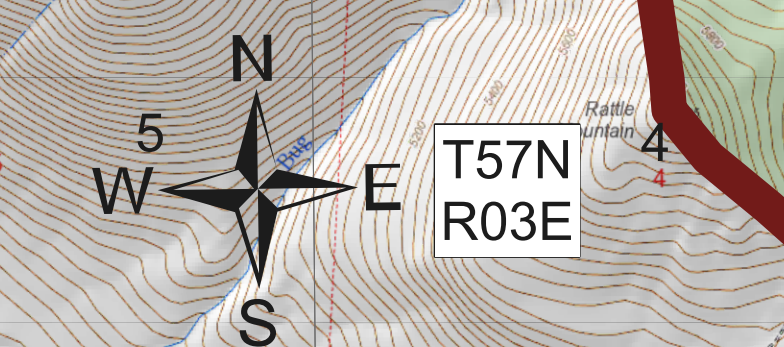
Burnt Peak
MTKNF-000167
7/13/2021

583 acres at 7/12/2021 02:43



- Helispot
 - () Division Break
 - Drop Point
 - ▲ Camp
 - Staging Area
 - Lookout
 - Water Source
 - ▭ Wildfire Daily Fire Perimeter
- Roads
- Roads Open to Highway Legal Vehicles Only, Yearlong
 - - - Roads Open to Highway Legal Vehicles Only, Seasonal
 - State or US Highway
 - Other Public Roads
 - Private Roads
- FS Roads by IGBC
- - - 1 - IMPASSABLE TO MOTORIZED VEHICLES
 - - - 2 - RESTRICTED/LEGALLY GATED ADMIN USE
 - - - 3 - BARRIERED/LEGALLY NO ADMIN USE
 - - - 4 - OPEN DURING BEAR SEASON
 - - - Decommissioned
- ClosureAreas
- ▭ ClosureRoads
 - ▭ American Forest Management
 - ▭ FS
 - ▭ MT_State
 - ▭ Other_Private
 - ▭ Stinson_Lumber
 - ▭ Water
 - ▭ Section
 - ▭ TwnRng

Idaho
Panhandle NF



K. Miller
7/12/2021 2102
Acres from IR
North American 1983 Datum, Lat/Long 9
Grid

