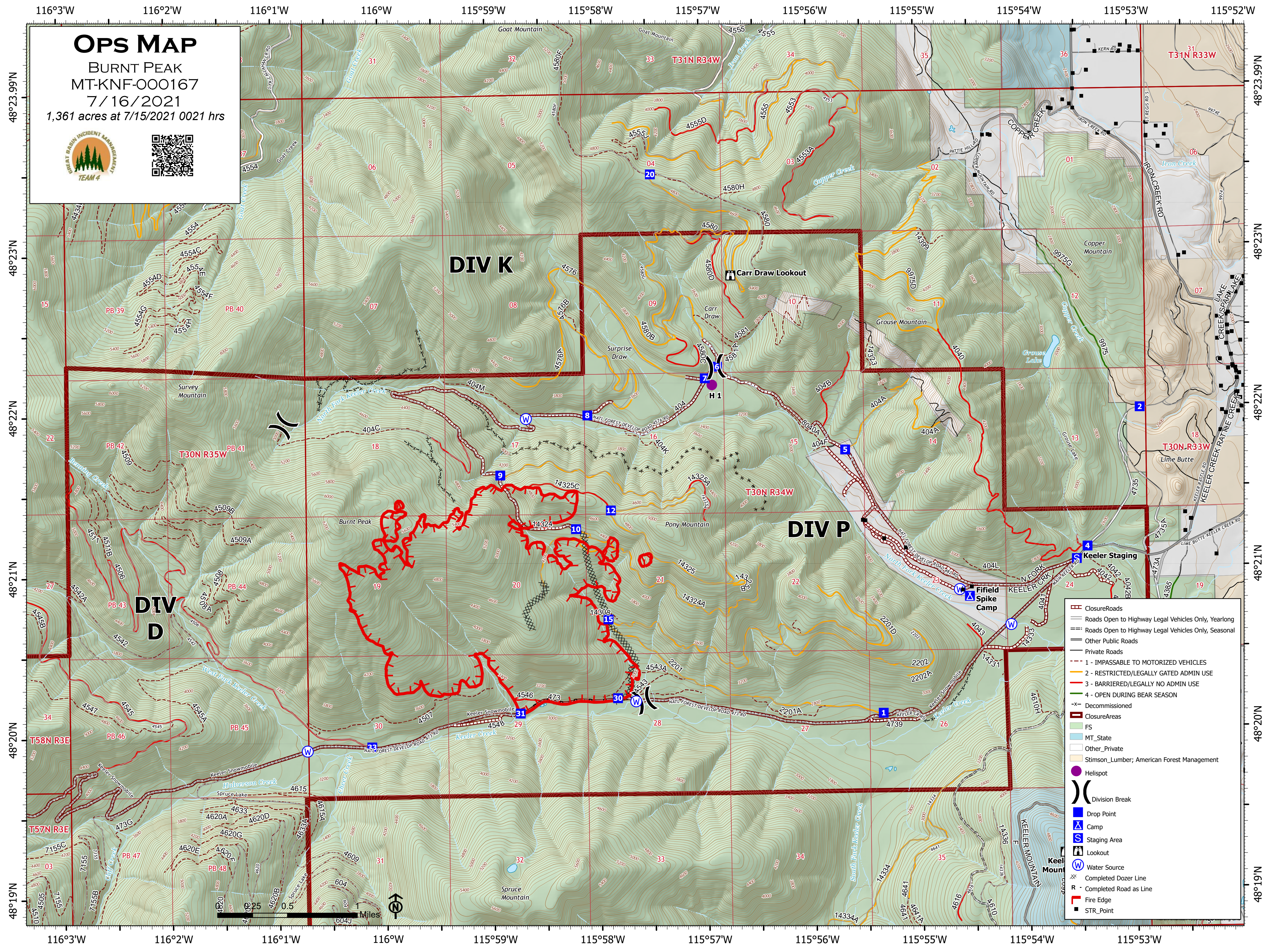


OPS MAP

BURNT PEAK
MT-KNF-000167

7/16/2021

1,361 acres at 7/15/2021 0021 hrs



DIV K

DIV P

DIV D

- ClosureRoads
- Roads Open to Highway Legal Vehicles Only, Yearlong
- Roads Open to Highway Legal Vehicles Only, Seasonal
- Other Public Roads
- Private Roads
- 1 - IMPASSABLE TO MOTORIZED VEHICLES
- 2 - RESTRICTED/LEGALLY GATED ADMIN USE
- 3 - BARRIERED/LEGALLY NO ADMIN USE
- 4 - OPEN DURING BEAR SEASON
- x- Decommissioned
- ClosureAreas
- FS
- MT_State
- Other_Private
- Stimson_Lumber; American Forest Management
- Helispot
- Division Break
- Drop Point
- Camp
- Staging Area
- Lookout
- Water Source
- Completed Dozer Line
- Completed Road as Line
- Fire Edge
- STR_Point

