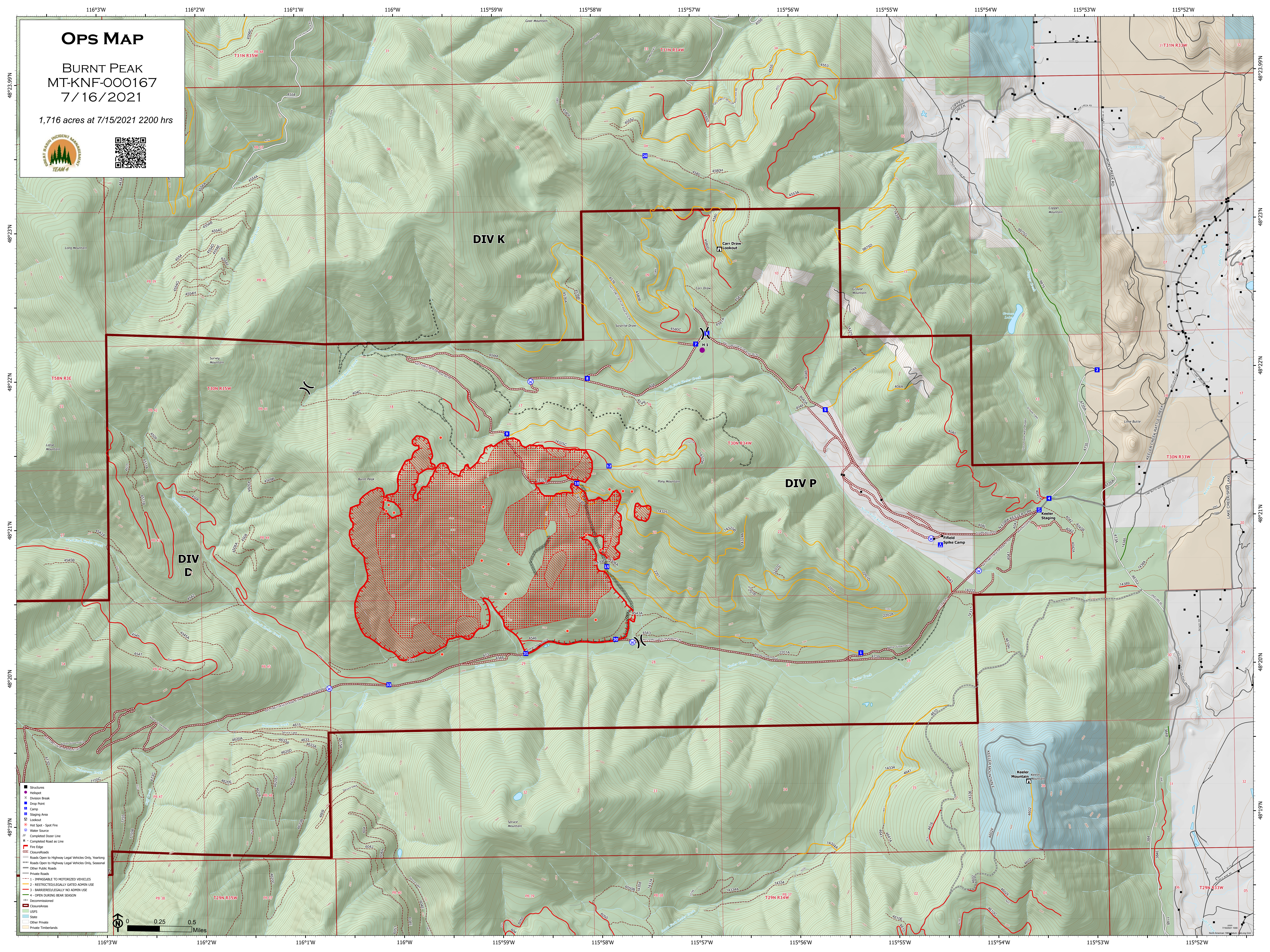


# OPS MAP

BURNT PEAK  
MT-KNF-000167  
7/16/2021

1,716 acres at 7/15/2021 2200 hrs



DIV K

DIV P

DIV C

- Structures
- Hotspot
- Division Break
- Drop Point
- Camp
- Staging Area
- Lookout
- Hot Spot - Spot Fire
- Water Source
- Completed Road as Line
- Completed Road as Line
- Fire Edge
- Closure/Roads
  - Roads Open to Highway Legal Vehicles Only, Yearlong
  - Roads Open to Highway Legal Vehicles Only, Seasonal
  - Other Public Roads
  - Private Roads
- 1 - IMPASSABLE TO MOTORIZED VEHICLES
- 2 - RESTRICTED/LEGALLY GATED ADMIN USE
- 3 - BARRIERS/LEGALLY NO ADMIN USE
- 4 - OPEN DURING BEAR SEASON
- Decommissioned
- Closure Areas
  - USFS
  - State
  - Other Private
  - Private Timberlands

