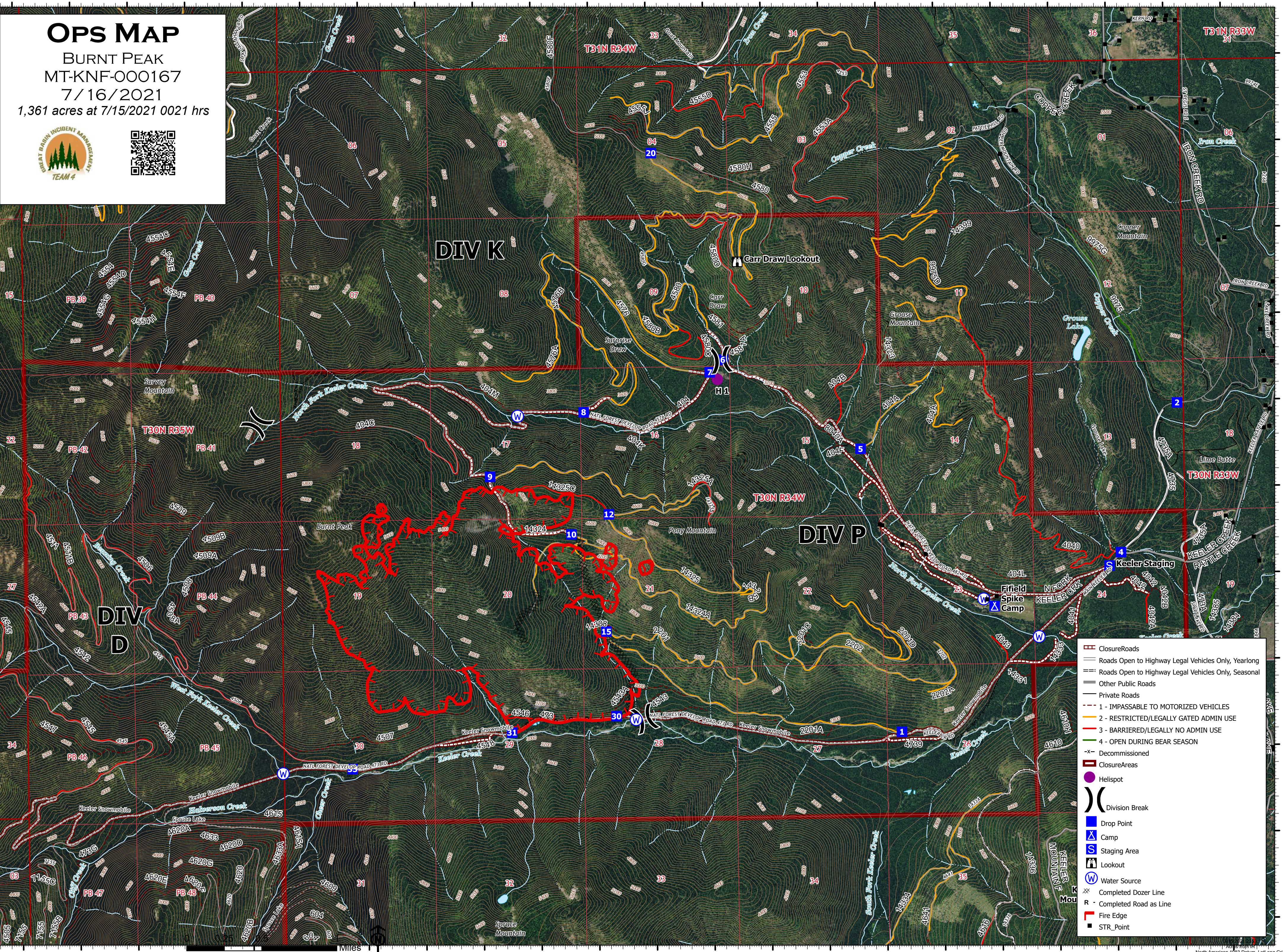


116°3'W 116°2'W 116°1'W 116°W 115°59'W 115°58'W 115°57'W 115°56'W 115°55'W 115°54'W 115°53'W

48°23.99'N 48°23'N 48°22'N 48°21'N 48°20'N 48°19'N

OPS MAP
 BURNT PEAK
 MT-KNF-000167
 7/16/2021
 1,361 acres at 7/15/2021 0021 hrs





- ClosureRoads
- Roads Open to Highway Legal Vehicles Only, Yearlong
- Roads Open to Highway Legal Vehicles Only, Seasonal
- Other Public Roads
- Private Roads
- 1 - IMPASSABLE TO MOTORIZED VEHICLES
- 2 - RESTRICTED/LEGALLY GATED ADMIN USE
- 3 - BARRIERED/LEGALLY NO ADMIN USE
- 4 - OPEN DURING BEAR SEASON
- Decommissioned
- ClosureAreas
- Helispot
- Division Break
- Drop Point
- Camp
- Staging Area
- Lookout
- Water Source
- Completed Dozer Line
- Completed Road as Line
- Fire Edge
- STR_Point

116°3'W 116°2'W 116°1'W 116°W 115°59'W 115°58'W 115°57'W 115°56'W 115°55'W 115°54'W 115°53'W

48°23.99'N 48°23'N 48°22'N 48°21'N 48°20'N 48°19'N

North American 1983 Datum, Lat/Long Grid