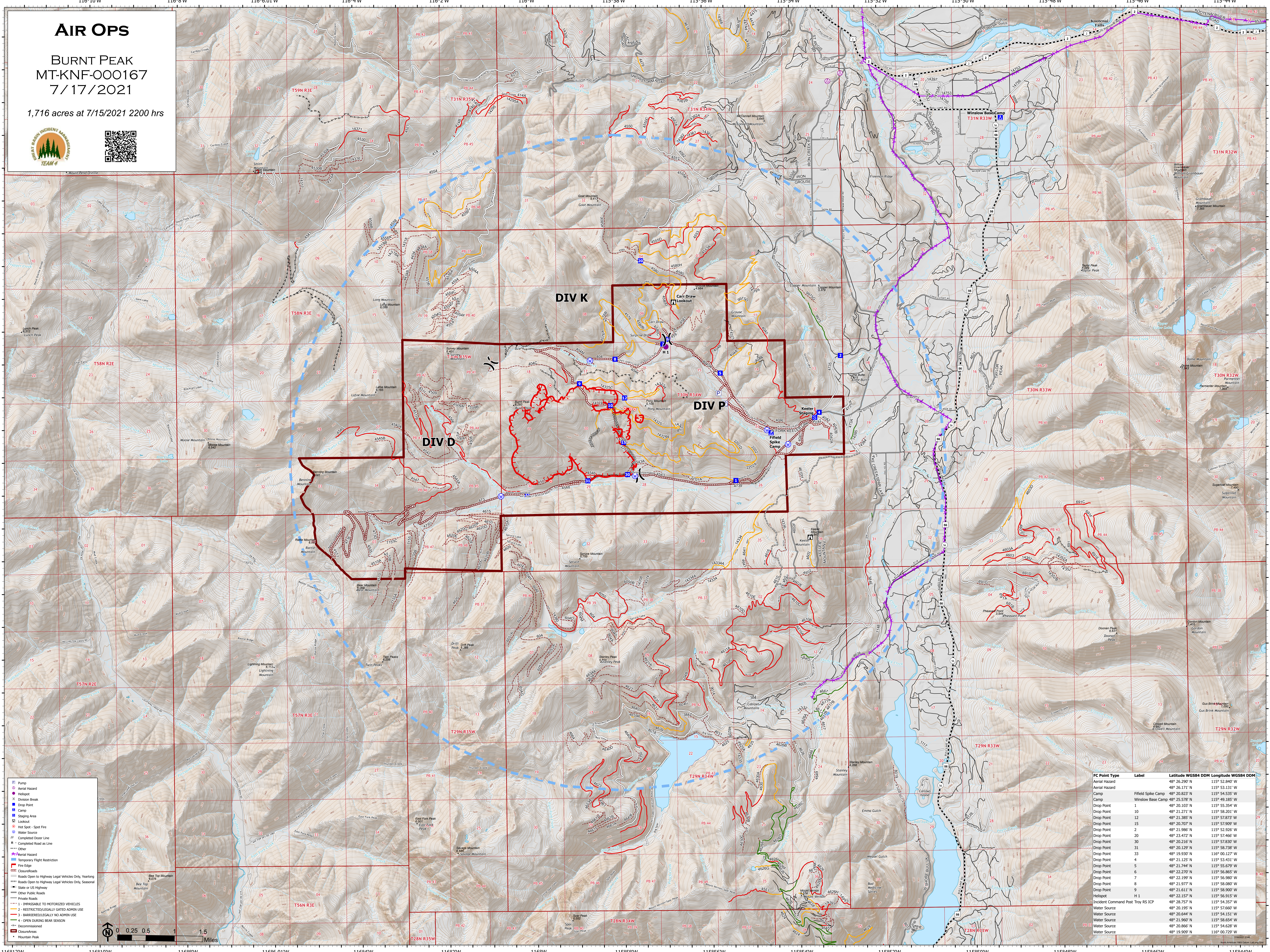


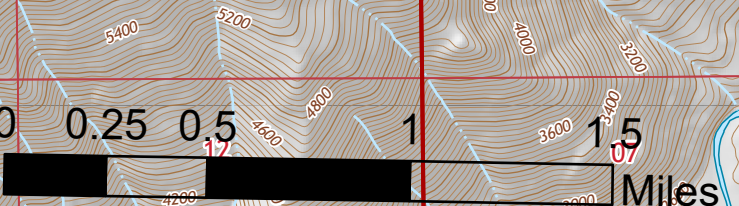
AIR OPS

BURNT PEAK
MT-KNF-000167
7/17/2021

1,716 acres at 7/15/2021 2200 hrs



- Pump
- Aerial Hazard
- Hot Spot
- Division Break
- Drop Point
- Camp
- Staging Area
- Lookout
- Hot Spot - Spot Fire
- Water Source
- Completed Over Line
- Completed Road as Line
- Other
- Aerial Hazard
- Temporary Flight Restriction
- Fire Edge
- Closure/Roads
- Roads Open to Highway Legal Vehicles Only, Yearning
- Roads Open to Highway Legal Vehicles Only, Seasonal
- State or US Highway
- Other Public Roads
- Private Roads
- 1 - IMPASSIBLE TO MOTORIZED VEHICLES
- 2 - RESTRICTED/LEGALLY GATED ADMIN USE
- 3 - BARRIERED/LEGALLY GATED ADMIN USE
- 4 - OPEN DURING BEAR SEASON
- Decommissioned
- Closure/roads
- Mountain Peak



FC Point Type	Label	Latitude WGS84 DDM	Longitude WGS84 DDM
Aerial Hazard		48° 26.200' N	115° 52.600' W
Aerial Hazard		48° 26.171' N	115° 53.131' W
Camp	Winslow Base Camp	48° 25.578' N	115° 49.185' W
Camp	Fifield Spike Camp	48° 20.823' N	115° 54.535' W
Drop Point	1	48° 20.103' N	115° 55.354' W
Drop Point	10	48° 21.271' N	115° 58.201' W
Drop Point	12	48° 21.385' N	115° 57.873' W
Drop Point	15	48° 20.707' N	115° 57.909' W
Drop Point	2	48° 21.986' N	115° 52.926' W
Drop Point	20	48° 23.472' N	115° 57.466' W
Drop Point	30	48° 20.216' N	115° 57.830' W
Drop Point	31	48° 20.129' N	115° 58.738' W
Drop Point	33	48° 19.339' N	116° 00.127' W
Drop Point	4	48° 21.125' N	115° 53.431' W
Drop Point	5	48° 21.244' N	115° 55.679' W
Drop Point	6	48° 22.270' N	115° 56.865' W
Drop Point	7	48° 22.199' N	115° 56.980' W
Drop Point	8	48° 21.977' N	115° 58.080' W
Drop Point	9	48° 21.611' N	115° 58.900' W
Helicopter	H 1	48° 22.157' N	115° 56.915' W
Incident Command Post	Troy RS ICP	48° 28.757' N	115° 54.357' W
Water Source		48° 20.195' N	115° 57.660' W
Water Source		48° 20.644' N	115° 54.151' W
Water Source		48° 21.960' N	115° 58.654' W
Water Source		48° 20.866' N	115° 54.628' W
Water Source		48° 19.909' N	116° 00.729' W