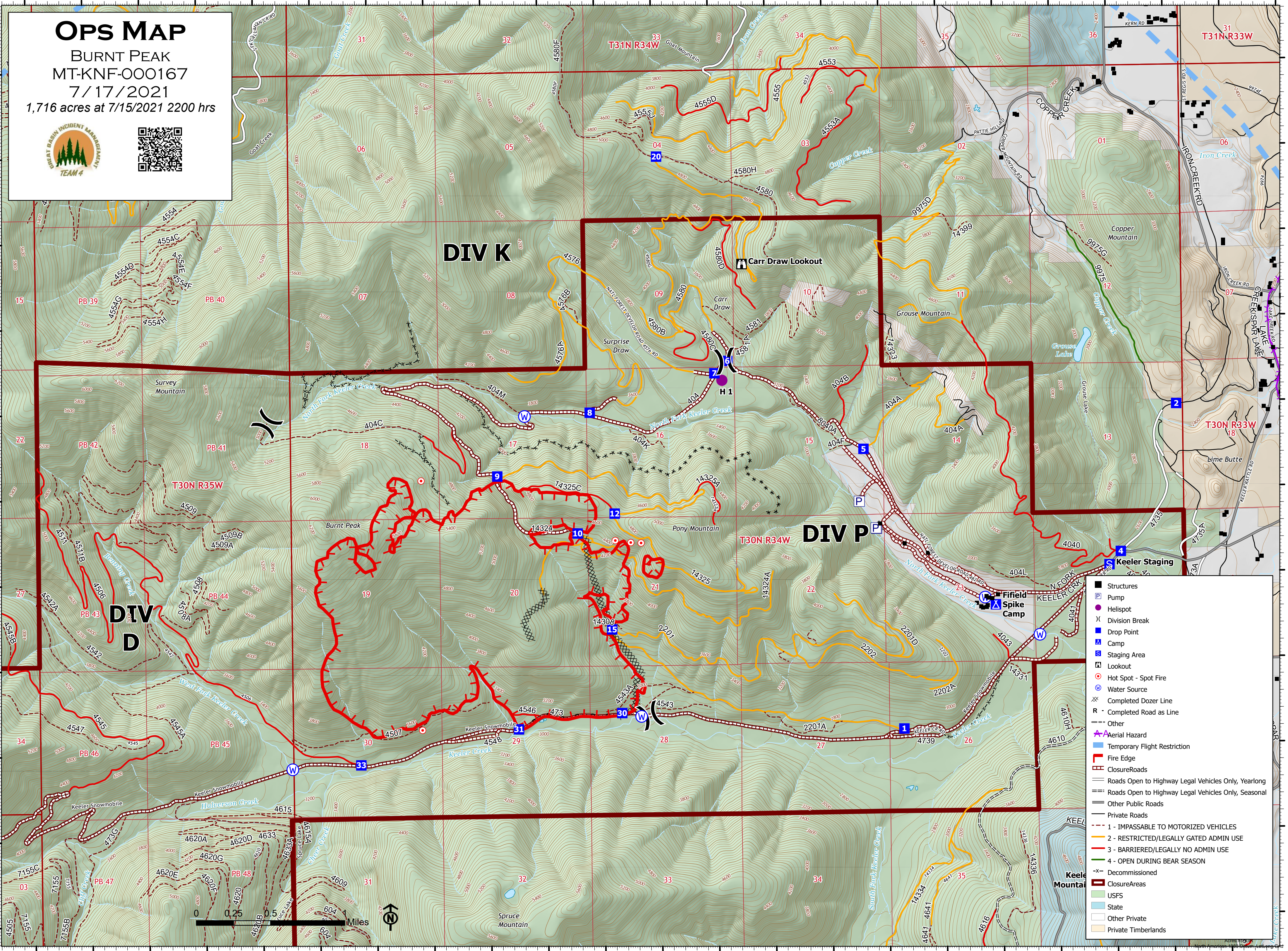


116°3'W 116°2'W 116°1'W 116°W 115°59'W 115°58'W 115°57'W 115°56'W 115°55'W 115°54'W 115°53'W 115°52'W

48°23.99'N 48°23'N 48°22'N 48°21'N 48°20'N 48°19'N

**OPS MAP**  
 BURNT PEAK  
 MT-KNF-000167  
 7/17/2021  
 1,716 acres at 7/15/2021 2200 hrs





- Structures
- Ⓟ Pump
- Helispot
- ⌘ Division Break
- Ⓧ Drop Point
- Ⓛ Camp
- Ⓜ Staging Area
- Ⓛ Lookout
- Hot Spot - Spot Fire
- Ⓛ Water Source
- ⌘ Completed Dozer Line
- Ⓛ Completed Road as Line
- Ⓛ Other
- ⚡ Aerial Hazard
- Ⓛ Temporary Flight Restriction
- Ⓛ Fire Edge
- Ⓛ Closure Roads
- Ⓛ Roads Open to Highway Legal Vehicles Only, Yearlong
- Ⓛ Roads Open to Highway Legal Vehicles Only, Seasonal
- Ⓛ Other Public Roads
- Ⓛ Private Roads
- Ⓛ 1 - IMPASSABLE TO MOTORIZED VEHICLES
- Ⓛ 2 - RESTRICTED/LEGALLY GATED ADMIN USE
- Ⓛ 3 - BARRIERED/LEGALLY NO ADMIN USE
- Ⓛ 4 - OPEN DURING BEAR SEASON
- Ⓛ Decommissioned
- Ⓛ Closure Areas
- Ⓛ USFS
- Ⓛ State
- Ⓛ Other Private
- Ⓛ Private Timberlands



116°3'W 116°2'W 116°1'W 116°W 115°59'W 115°58'W 115°57'W 115°56'W 115°55'W 115°54'W 115°53'W 115°52'W