

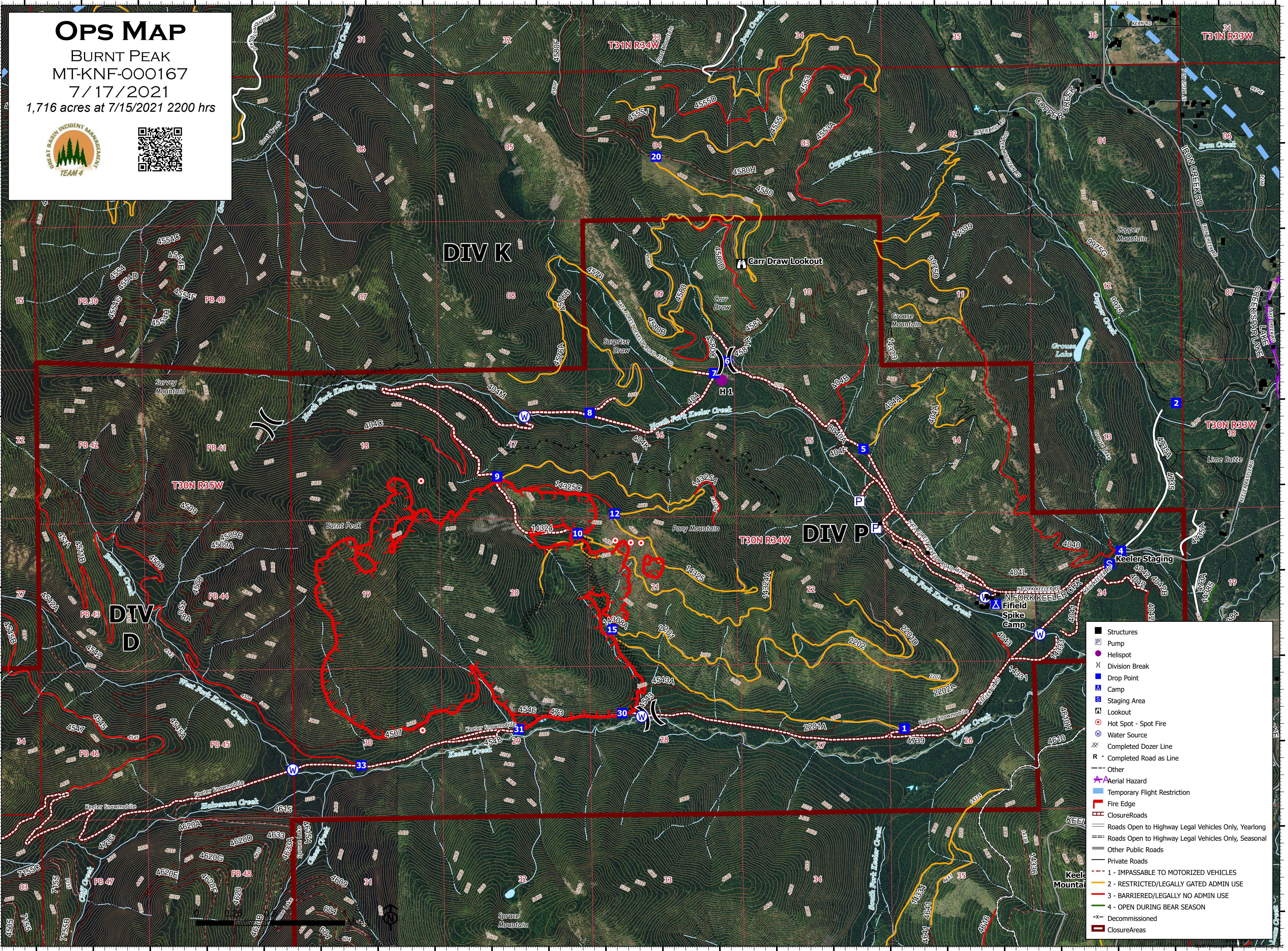
116°3'W 116°2'W 116°1'W 116°W 115°59'W 115°58'W 115°57'W 115°56'W 115°55'W 115°54'W 115°53'W 115°52'W

48°23.99'N
48°23'N
48°22'N
48°21'N
48°20'N
48°19'N

48°23.99'N
48°23'N
48°22'N
48°21'N
48°20'N
48°19'N

OPS MAP
 BURNT PEAK
 MT-KNF-000167
 7/17/2021
 1,716 acres at 7/15/2021 2200 hrs





- Structures
- ⊞ Pump
- Helispot
- ⌘ Division Break
- ⓧ Drop Point
- ⓧ Camp
- ⓧ Staging Area
- ⓧ Lookout
- Hot Spot - Spot Fire
- ⓧ Water Source
- ⓧ Completed Dozer Line
- ⓧ Completed Road as Line
- ⓧ Other
- ⓧ Aerial Hazard
- ⓧ Temporary Flight Restriction
- ⓧ Fire Edge
- ⓧ ClosureRoads
- ⓧ Roads Open to Highway Legal Vehicles Only, Yearlong
- ⓧ Roads Open to Highway Legal Vehicles Only, Seasonal
- ⓧ Other Public Roads
- ⓧ Private Roads
- ⓧ 1 - IMPASSABLE TO MOTORIZED VEHICLES
- ⓧ 2 - RESTRICTED/LEGALLY GATED ADMIN USE
- ⓧ 3 - BARRIERED/LEGALLY NO ADMIN USE
- ⓧ 4 - OPEN DURING BEAR SEASON
- ⓧ Decommissioned
- ⓧ ClosureAreas