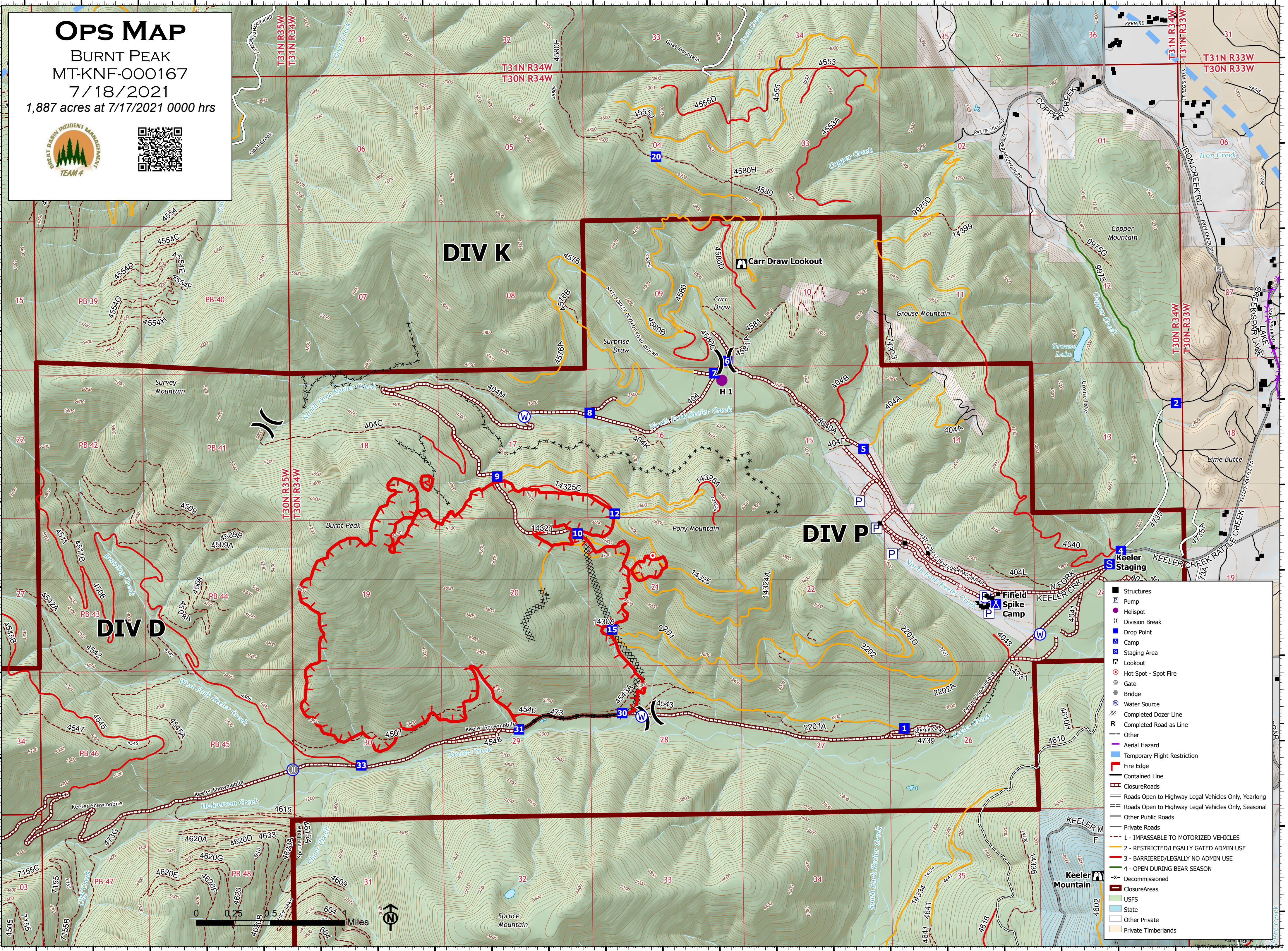


116°3'W 116°2'W 116°1'W 116°W 115°59'W 115°58'W 115°57'W 115°56'W 115°55'W 115°54'W 115°53'W 115°52'W

48°23.99'N 48°23'N 48°22'N 48°21'N 48°20'N 48°19'N

OPS MAP
 BURNT PEAK
 MT-KNF-000167
 7/18/2021
 1,887 acres at 7/17/2021 0000 hrs





DIV K

DIV P

DIV D

- Structures
- Ⓟ Pump
- Helispot
- ⌋ Division Break
- Drop Point
- Ⓧ Camp
- Ⓜ Staging Area
- Ⓜ Lookout
- ⦿ Hot Spot - Spot Fire
- ⦿ Gate
- ⦿ Bridge
- ⦿ Water Source
- Ⓧ Completed Dozer Line
- Ⓧ Completed Road as Line
- Ⓧ Other
- Ⓧ Aerial Hazard
- Ⓧ Temporary Flight Restriction
- Ⓧ Fire Edge
- Ⓧ Contained Line
- Ⓧ Closure Roads
- Ⓧ Roads Open to Highway Legal Vehicles Only, Yearlong
- Ⓧ Roads Open to Highway Legal Vehicles Only, Seasonal
- Ⓧ Other Public Roads
- Ⓧ Private Roads
- Ⓧ 1 - IMPASSABLE TO MOTORIZED VEHICLES
- Ⓧ 2 - RESTRICTED/LEGALLY GATED ADMIN USE
- Ⓧ 3 - BARRIERED/LEGALLY NO ADMIN USE
- Ⓧ 4 - OPEN DURING BEAR SEASON
- Ⓧ Decommissioned
- Ⓧ Closure Areas
- Ⓧ USFS
- Ⓧ State
- Ⓧ Other Private
- Ⓧ Private Timberlands



116°3'W 116°2'W 116°1'W 116°W 115°59'W 115°58'W 115°57'W 115°56'W 115°55'W 115°54'W 115°53'W