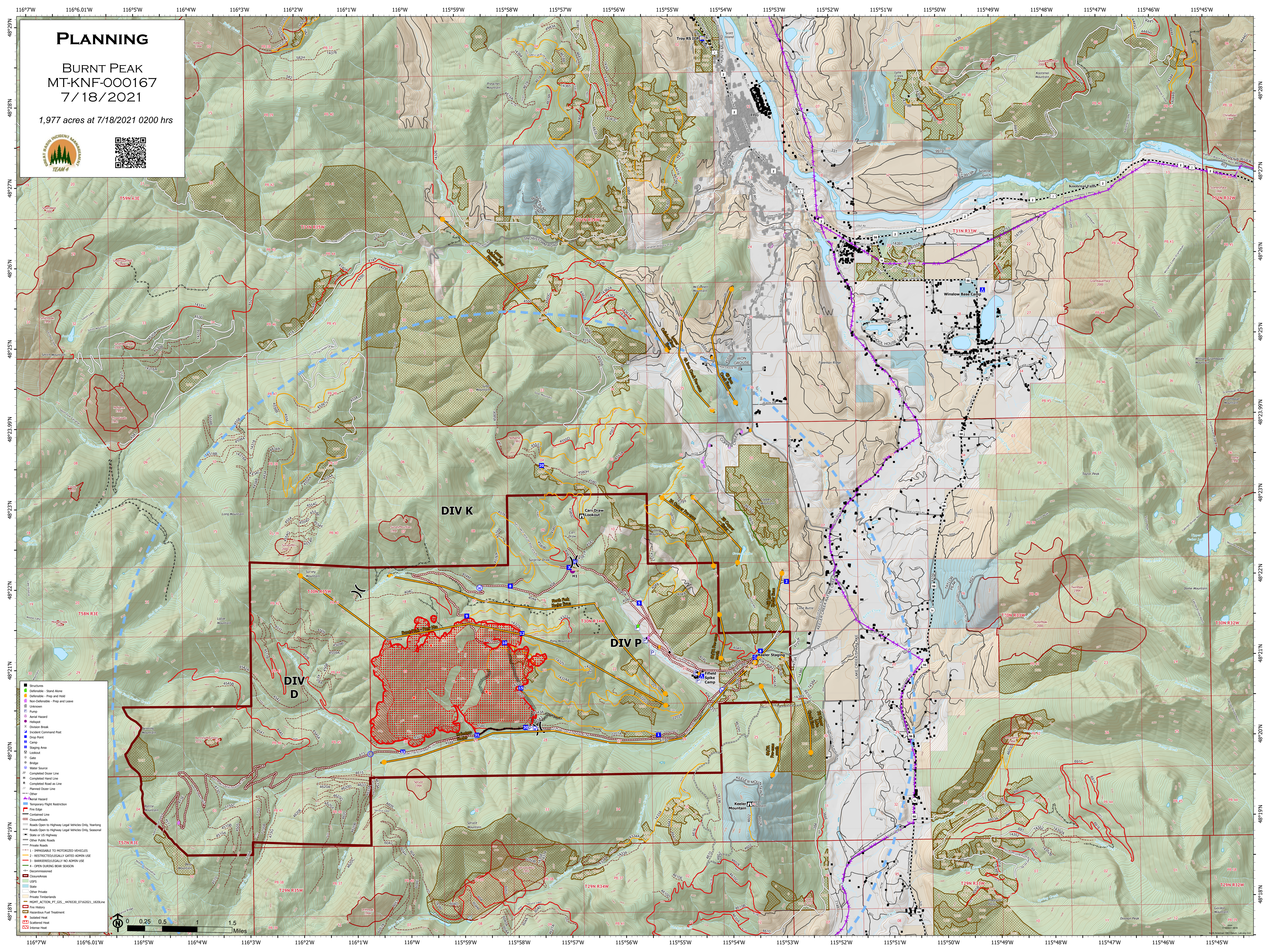


PLANNING

BURNT PEAK
MT-KNF-000167
7/18/2021

1,977 acres at 7/18/2021 0200 hrs



- Structures
- Defensible - Stand Alone
- Defensible - Prep and Hold
- Non-Defensible - Prep and Leave
- Unknown
- Pump
- Aerial Hazard
- Helipad
- Division Break
- Incident Command Post
- Drop Point
- Camp
- Staging Area
- Lookout
- Gate
- Bridge
- Water Source
- Completed Outer Line
- H Completed Inner Line
- R Completed Road as Line
- Planned Outer Line
- Other
- Aerial Hazard
- Temporary Flight Restriction
- Fire Edge
- Contained Line
- Closure/Roads
- Roads Open to Highway Legal Vehicles Only, Yearling
- Roads Open to Highway Legal Vehicles Only, Seasonal
- State or US Highway
- Other Public Roads
- Private Roads
- 1 - IMPASSABLE TO MOTORIZED VEHICLES
- 2 - RESTRICTED/LEGALLY GATED ADMIN USE
- 3 - BARRIERS/LEGALLY NO ADMIN USE
- 4 - OPEN DURING BEAR SEASON
- Decommissioned
- Closures/Restrictions
- State
- Other Private
- Private Timberlands
- WCA ACTION_PT_GIS_4476530_07162021_1620line
- Fire History
- Hazardous Fuel Treatment
- Isolated Heat
- Scattered Heat
- Intense Heat

